

What if there's a **STUDENT** with a confirmed/suspected case of **COVID-19** on campus?

What if the student has the following?



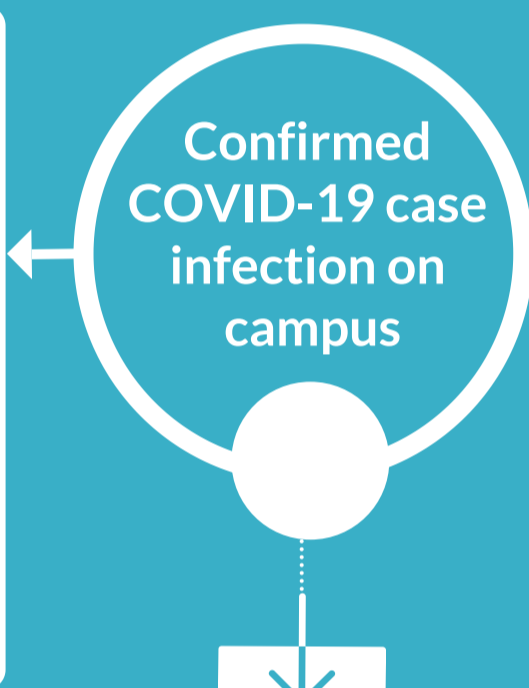
Additional steps:

- ① Notify Immediate Management Supervisor (IMS).
- ② IMS or designee to call the student and assist to complete the confidential Student COVID-19 Questionnaire.
- ③ If self-isolation is not required, students may return to class.
- ④ If required, student will self isolate.

COMMUNICATION

If only ONE COVID-19 case on campus:

1. Individual notification by IMS or designee to people meeting the close-contact criteria.
2. Union notification by President's Office.



When can a student return to campus? ?

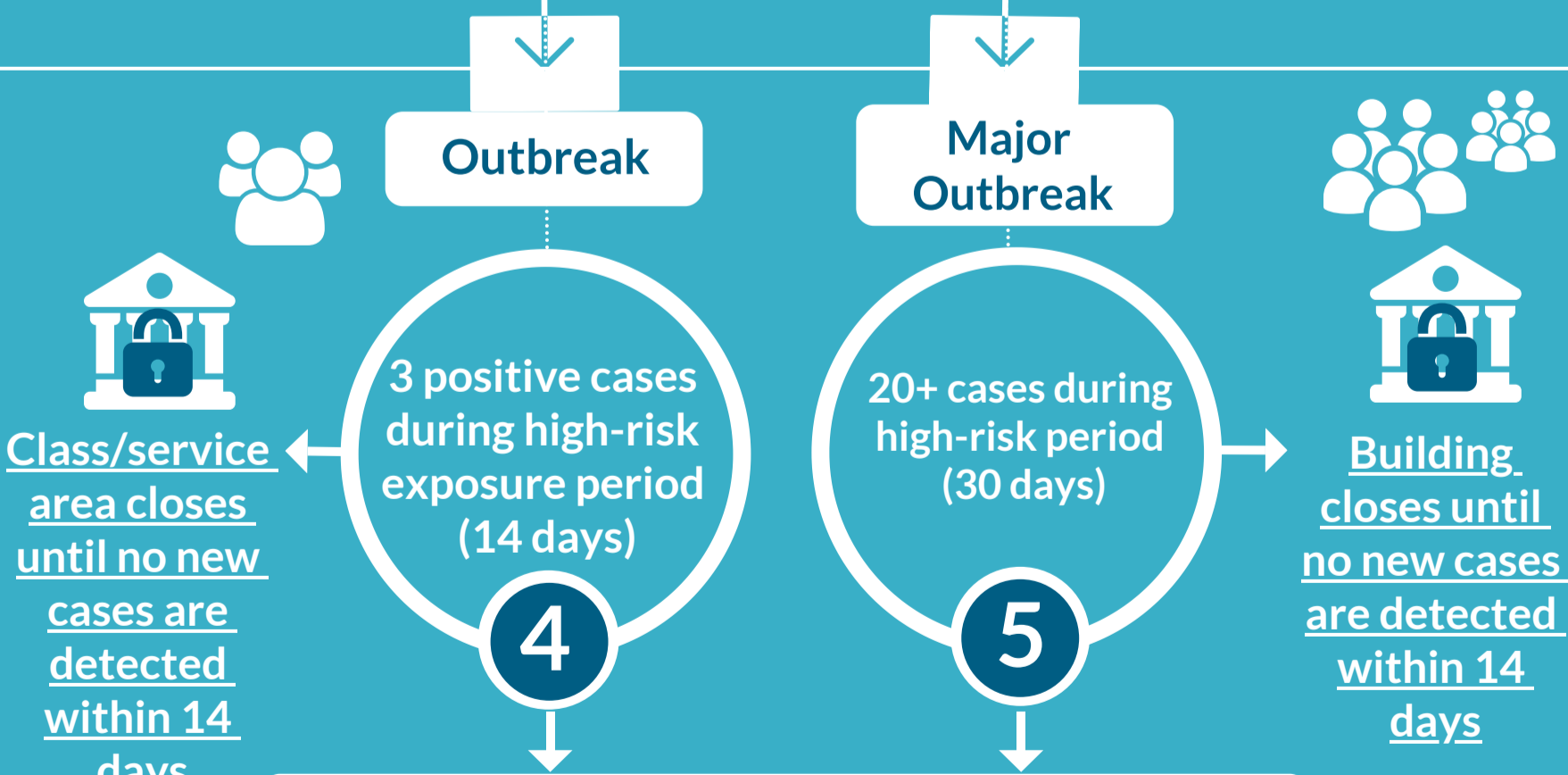
ALL of the following conditions must be met:

1. Fever free
2. Symptoms improved
3. At least 10 days have passed since the onset or after positive contact without symptoms

Campus will remain open

Steps to follow:

1. If symptomatic, exclude from campus for 10 days from symptom onset.
2. If asymptomatic, exclude from campus for 10 days from specimen collection date.
3. IMS or designee to complete the confidential Student COVID-19 Questionnaire for contact tracing purposes.
4. **Recommended:** Asymptomatic contacts should test 5-7 days from last exposure. If symptomatic, test immediately.
5. Disinfect primary spaces with any potential or confirmed exposure.



COMMUNICATION

If there is an **OUTBREAK** or a **MAJOR OUTBREAK** on campus,

1. Individual notification by IMS or designee to **all students** enrolled in the class or participating in the service activity.
2. Campus notification by Campus Communications.
3. Union notification by President's Office.