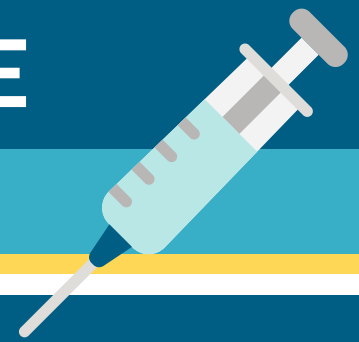


VACCINE MANDATE ACTION REQUIRED



Help with COVID-19 Vaccine Document Upload

The following locations are open to assist students with uploading COVID-19 vaccine records and exemption documents. Dates and times are subject to change. No appointment necessary.

In-Person Assistance

ANAHEIM CAMPUS

- **Counseling and Student Services Department, Room 215**
 - Monday-Thursday from 8 a.m. – 5:30 p.m.
 - For the month of June: Monday and Wednesday hours from 8 a.m. - 7:30 p.m.
 - Friday from 8 a.m. – 12 p.m.
- **Career Skills and Resource Lab, Room 606**
 - Monday - Thursday from 10 a.m. - 6 p.m.

CYPRESS CENTER

- **Counseling Office, TE II-207**
 - Tuesday - Wednesday from 8 a.m. – 5:30 p.m.

WILSHIRE CENTER

- **Counseling Office, Room 112**
 - Tuesday - Wednesday from 8 a.m. - 5:30 p.m.

By Phone

NOCE STARHELP

- starhelp@noce.edu or 714.808.4679

NOCE COUNSELING

- counseling@noce.edu or 714.808.4682

DISABILITY SUPPORT SERVICES

- disabilitysupport@noce.edu or 714.484.7057

Have questions or need assistance, contact: 714.808.4679 or starhelp@noce.edu

2022 Summer