

2022 FALL SEMESTER

# NOCE

## NORTH ORANGE

CONTINUING EDUCATION

NEW FOR 2022

### Child Wellness

PAGE 74

NO COST TO YOU

### High School Diploma

PAGE 14

LEARN & EARN

### Career Certificates

PAGE 20

TUITION-FREE CLASSES FOR ADULTS

PAGES 4-5

Registration Starts

**JULY 26, 2022**

 [NOCE.EDU](https://www.noce.edu)  714.808.4679

# MAKE YOUR NEXT MOVE

Whether you want to complete your high school diploma, move up in your career, or learn new job skills, there's a **FREE** course waiting for you at NOCE!

Explore [noce.edu](https://noce.edu)

## Mission

NOCE serves our diverse community by providing holistic programs and services that are relevant and accessible to all learners in achieving their goals. NOCE is dedicated to offering a transformative educational experience that builds lasting foundational skills and promotes student success.

## Vision

NOCE commits to enriching lives through education to meet the evolving needs of the community.

## Values

- **Accountability** – We strive to utilize data-informed decision-making processes.
- **Diversity** – We celebrate our diverse community by committing ourselves to an inclusive institutional culture.
- **Equity** – We actively address achievement gaps and systemic racism to ensure equal opportunity and access for all.
- **Excellence** – We strive for excellence by providing evolving, dynamic, high-quality instruction.
- **Innovation** – We challenge the status quo by finding creative solutions.
- **Integrity** – We cultivate a collaborative equity-minded culture of mutual respect, honesty, and responsibility.
- **Learning** – We commit to offering holistic programs that promote personal and professional growth.

ANAHEIM | CAMPUS



# Table of Contents

## About This Schedule

NOCE Programs	04
Understand the Class Schedule	06
Important Semester Dates	08
How to Become an NOCE Student	09
Centers and Community Locations	10
Student Resources	12

## High School Diploma and Basic Skills

Program Overview	12
Adult High School Diploma	15
GED/HISET Preparation	16
College Preparation	17
Learning Centers	18

## Career Technical Education

Overview/Career Resources	19
Business/Office Technology	22
Bookkeeping	24
Computers	26
Early Childhood Education	28
Electrical Technology	29
Funeral Service Assistant	30
Management	30
Medical Assistant	32
Pharmacy Technician	35
Quality Assurance Management for Medical Devices	37

## Disability Support Services

Program Overview	38
Certificate Tracks	41
WISE Program	44

## English and U.S. Citizenship

Program Overview	45
ESL Core	48
Academic Success	51
Citizenship	52
ESL Specialty	53
Community-Based Off-Site	56
Career Pathways	56

## Active Older Adults/ Emeritus

Program Overview	57
Mature Driver	58
Communications	58
Creative Arts	61
Body and Mind	64

## Parenting

Parent-and-Me	69
Foundational Parenting	70
Parenting Workshops	71
Love and Logic® Classes	71
Child Wellness	72

## Community Services

Program Overview	74
Ed2Go	75

## Information and Policies

# NOCE Programs

NOCE provides a variety of pathways to help students gain skills to transition to academic, career, and life enrichment opportunities.

## High School Diploma and Basic Skills

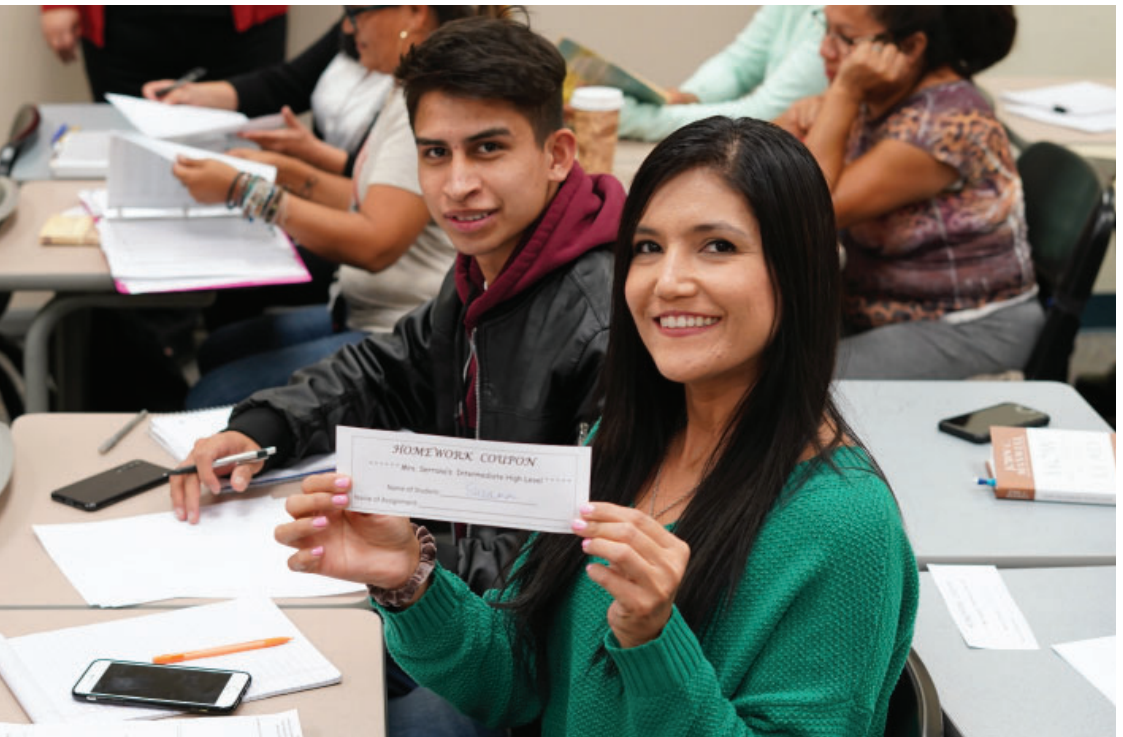
- Complete your high school diploma.
- Prepare for college.
- Get tutoring and support.
- Study for the GED/HiSET exams.



## Career Technical Education

- Take quality, tuition-free career classes.
- Earn certificates in just 1-4 semesters!
- Succeed in high-demand industries:

Accounting  
Administrative  
Business  
Child Development  
Computers & Technology  
Construction  
Customer Service  
Healthcare  
Management



## Disability Support Services

- Increase independence and self-advocacy.
- Prepare for and obtain competitive employment.
- Access disability support services for college courses.
- Get support with emotional health and social skills.



## English and U.S. Citizenship

- Practice listening, speaking, reading, and writing skills.
- Learn English and job skills at the same time.
- Prepare for the U.S. Citizenship Test.
- Develop academic skills for success in college.



## Active Older Adults/Emeritus

- For adults ages 50+, but open to anyone 18+.
- Empower independence, advocacy, physical and cognitive health, economic self-sufficiency, and community engagement.



## Parenting

- Improve parenting skills.
- Deepen connections with the children in your life.
- Create a thriving home.



## Community Education (Fee-Based)

- Learn new skills.
- Personal enrichment classes in art, career skills, business, sign language, and more!



### Need Translated Instructions?

Scan to translate.

¿Necesita instrucciones traducidas?

Escanear para traducir.

# Important Semester Dates



## 2022 Fall

Classes

**Aug 15 - Dec 17, 2022**

Registration Begins

**Tues, July 26, 2022**



## 2023 Spring

Classes

**Jan 13 - May 27, 2023**

Registration Begins

**Tues, Dec 6, 2022**

NOCE will be closed and no classes will be held on the following holidays:

- September 5: Labor Day
- November 11: Veterans' Day
- November 24-25: Thanksgiving Holiday Break
- December 23, 2022 - January 2, 2023: Winter Holiday

## You Can Do It! We Can Help.

- Get Started: [noce.edu/apply](https://noce.edu/apply)
- Need Help? Contact Us: [714.808.4679](tel:714.808.4679) or [starhelp@noce.edu](mailto:starhelp@noce.edu)
- Registration Hours: Mon - Thu: 7:30 a.m. - 7 p.m.  
Fri: 7:30 a.m. - 4 p.m.
- Health & Safety: [noce.edu/vaccine](https://noce.edu/vaccine)



Scan for Help

## COVID-19 Vaccine Requirement

To continue providing the safest educational environment possible, the North Orange County Community College District (NOCCCD) Board of Trustees has extended the COVID-19 vaccination mandate through the end of the 2022 calendar year. Students taking in-person classes, labs, and/or learning centers must adhere to the NOCCCD COVID-19 vaccine mandate or request an exemption. More information at [noce.edu/vaccine](https://noce.edu/vaccine).

## ★ WATCH FOR HELPFUL STUDENT TIPS

Throughout the schedule, pay attention to the pink star for important tips.

# Understand the Class Schedule

## How to Read Course Listings

Course Title	<b>Pharmacy Technician, Lab for the In-Patient (Formerly MEDO 221)</b>						<b>PTEC 200</b>	Subject code/ Course number
Prerequisite; corequisite; and/or advisory	<i>Prerequisite:</i> PTEC 105 Pharmacy Operations Lab and PTEC 110 Pharmaceutical Mathematics and PTEC 115 Pharmacology I and PTEC 120 Pharmacology II. Course covers the preparation of medications given by intravenous, epidural and subcutaneous routes of administration. The student will learn aseptic techniques, pharmacy IV calculations, drug compatibilities and stabilities, IV therapy management, and specialized equipment. The laboratory incorporates use of laminar and vertical flow hoods and computerized software for IV preparation. <b>Textbook Required.</b>							Course description
Course Reference Number	<b>CRN</b>	<b>Dates</b>	<b>Days</b>	<b>Time</b>	<b>Location</b>	<b>Instructor</b>	Instructor who is teaching the class.	
Course start and end dates	50947	8/15 - 10/14	Remote	Remote	ONLINE - ONLINE	Shields, Julie		
		8/17 - 10/12	W	06:00pm-07:50pm	Anaheim Campus - 408	Shields, Julie		
		<i>Required In-Person Dates/Times:</i> Aug 17, Aug 24, Aug 31, Sept 7, Sept 14, Sept 21, Sept 28, Oct 5, and Oct 12 from 6:00pm-8:00pm						
	51136	10/17 - 12/16	Remote	Remote	ONLINE - ONLINE	Shields, Julie		
		10/19 - 12/14	W	09:00am-10:50am	Anaheim Campus - 408	Shields, Julie		
		<i>Required In-Person Meeting Dates/Times:</i> Oct 19, Oct 26, Nov 2, Nov 9, Nov 16, Nov 23, Nov 30, Dec 7, and Dec 14 from 9:00am-11:00am						

Day(s) of class:

**M:** Monday

**T:** Tuesday

**W:** Wednesday

**Th:** Thursday

**F:** Friday

**S:** Saturday

**Remote:** Days of Class at Home/  
Off-Site Location

Important class notes.

Comments about meeting dates.

Center and/or location where class will be held:

**AN:** Anaheim Campus

**CC:** Cypress College

**CYP18:** Cypress Continuing Education Center, NOCE Building 18

**CYPTE2:** Cypress Continuing Education Center, NOCE/TE2 Building 12

**FC:** Fullerton College

**WIL:** Wilshire Continuing Education Center (in Fullerton)

## Learning Options - Types of Classes

<b>Zoom</b>	Courses scheduled at specific days/times (synchronous). Mostly meet in Canvas on Zoom.
<b>Online</b>	Completely online classes done on your own (asynchronously) in Canvas. Optional meeting times may be listed in the class notes.
<b>Hybrid</b>	Classes that have online coursework in Canvas and in-person classes on specific days/times. Students must attend both.
<b>Face-to-Face</b>	Classes that are completely in-person and scheduled on campus at specific days/times.

## Canvas

Canvas is NOCE's Learning Management System used by instructors to deliver online materials to students and also enhance in-person instruction. Students can communicate with their instructor, access course readings, assignments, syllabi, and grades through Canvas. Visit [noce.edu/canvas](https://noce.edu/canvas) to access and login using your Student ID# and password, which is the same as your myGateway password.

# Become an NOCE Student Today!

## Tuition-Free Noncredit Classes

### 1 Apply for a Student ID at [noce.edu/apply](https://noce.edu/apply)

1. Create an OpenCCC Account
2. Complete the Noncredit College Application
3. In 24-48 hours, you will receive your student ID required for remaining steps

### 2 Choose Your Program

Look up your program for registration details:

- **Basic Skills** – High School Diploma, GED, College Preparation, or Learning Centers: see page 13
- **Career Technical Education:** see page 20
- **Disability Support Services:** see page 39
- **English as a Second Language/Citizenship:** see page 46
- **Active Older Adults/Emeritus:** see page 58
- **Parenting:** see page 68

### 3 Start Your Courses!

See you in class! Courses start at various times throughout the term, starting the week of **August 15, 2022**; see course descriptions for specific start dates.

- For **in-person** classes, attendance on the first day of class is mandatory.
- **Online students** must sign in to Canvas during the first week of class.
- Spots in class may be reassigned to other students if this requirement is not met.

For more information, visit [noce.edu/academic-policies](https://noce.edu/academic-policies).

---

## Fee-Based Community Services Classes

### 1 Apply at [noce.edu/grow](https://noce.edu/grow)

Create a new student or household profile.

### 2 Browse Classes

Click on the “BROWSE” dropdown button to view available classes and categories.

### 3 Pay for Classes

Click “ADD TO CART” to select the class you want to take. You can add multiple classes to your cart before checkout. Follow the prompts to confirm and pay for classes.

✦ Need Help? Contact StarHelp at [714.808.4679](tel:714.808.4679) or [starhelp@noce.edu](mailto:starhelp@noce.edu)



# Center Locations

NOCE Centers are open for in-person classes. See course descriptions for specific locations.

## Anaheim Campus

1830 W. Romneya Drive, Anaheim, CA 92801  
Admissions and Records: Floor 2  
**714.808.4645**

M-Th: 8 a.m. — 7 p.m.  
Fri: 8 a.m. — 4 p.m.



## Cypress Center

9200 Valley View Street, Cypress, CA 90630  
Admissions and Records: Building 18, by Parking Lot 4  
**714.484.7038**

M-Th: 8 a.m. — 5 p.m.  
Fri: 8 a.m. — 4 p.m.



## Wilshire Center

315 E. Wilshire Avenue, Fullerton, CA 92832  
Admissions and Records: Building 300  
**714.992.9500**

M-Th: 8 a.m. — 7 p.m.  
Fri: 8 a.m. — 4 p.m.



# Register Anywhere!

## Walk-in Registration

**No matter where the class is held, students can register at any NOCE Center.**

Walk-ins are welcome on a first-come, first-serve basis.

## Get Help with Registration

For online and phone registration assistance, contact: **714.808.4679** or [starhelp@noce.edu](mailto:starhelp@noce.edu) or visit [noce.edu/registration](http://noce.edu/registration).

# Community Locations

NOCE offers classes at 50+ community locations in partnership with K-12 schools, community centers, senior centers, skilled nursing facilities, churches, and more. Only specific NOCE courses are offered at each location. Check course listings for more details.

## Anaheim

Access California Services	631 Brookhurst St., Ste. 107
Anaheim Crown Plaza	641 S. Beach Blvd.
Anaheim Terrace Care Center	141 S. Knott Ave.
Anaheim VIP Center	1158 N. Knollwood Cir.
Arbor Palms of Anaheim	3411 W. Ball Rd.
Brookdale Anaheim	200 N. Dale Ave.
Buena Vista Care Center	1440 S. Euclid St.
Coventry Court Health Center	2040 S. Euclid St.
Emerald Court	1731 Medical Center Dr.
Harbor Villa Care Center	861 S. Harbor Blvd
Karlton Residential Care Center	3615 W. Ball Rd.
La Palma Nursing Center	1130 W. La Plama Ave.
Leisure Court	11135 Leisure Ct.
Park Anaheim Healthcare Center	3435 W. Ball Rd.
Ponderosa Park Family Resource Ctr	2100 S. Haster St.
Rio Vista Elementary	310 N. Rio Vista St.
Senior Citizen's Center Anaheim	250 E. Center St.
St. Boniface Church	120 N Janss St.
Sun Mar Nursing Center	1720 W. Orange Ave.
W. Anaheim Extended Care Hospital	645 S. Beach Blvd.
Windsor Gardens of Anaheim	3415 W. Ball Rd.

## Brea

Brea Community Center	500 S. Sievers Ave.
Brea Memory Care Community	149 W. Lambert Rd.
Brea Senior Center	500 Seivers Ave.
Happy Brea Adult Day Health Care	596 Apollo St.

## Buena Park

Buena Park Nursing Center	8520 S. Western Ave.
Buena Park Senior Center	8150 Knott Ave.
Cottage of Artesia Gardens	6041 Kingman Ave.
Harvest Retirement	9011 Knott Ave.
Health Center of OC	9021 Knott Ave.

## Cypress

Cypress Senior Citizen Center	9031 Grindlay St.
Cypress Sunrise Village Apartments	9151 Grindlay St.
Boys and Girls Club of Greater Anaheim	10161 Moody St.

## Fullerton

Cambridge Court	1621 E. Commonwealth Ave.
Fullerton Community Center	340 W. Commonwealth Ave.
Fullerton Gardens	1510 E. Commonwealth Ave.
Gordon Lane Care Center	1821 E. Chapman Ave.
Morningside of Fullerton	800 Morningside Dr.
Palm Retirement Center	312 N. Roosevelt Ave.
Park Vista Assisted Living	2527 Brea Blvd.
Park Vista, Morningside	2525 Brea Blvd.
Rehab Institute Southern California	130 Laguna Rd.
St. Catherine	245 E. Wilshire Ave.
St. Elizabeth Healthcare	2800 N. Harbor Blvd.
Sunrise Assisted Living Fullerton	2226 N. Euclid Ave.
Terrace View Care Center	201 E. Bastanchury Rd.
The Pavillion, Sunny Hills	2222 N Harbor Blvd.
Topaz Elementary	3232 Topaz Ln.

## Garden Grove

Chapman Care Center	12232 Chapman Av.
Crescent Landing Garden Grove	11848 Valley View St.
Orangegrove Rehab Hospital	12332 Garden Grove Blvd.

## La Habra

La Habra Community Services Senior Center	101 W. La Habra Blvd.
La Habra Convalescent Hospital	1233 W. La Habra Blvd.
Park Regency Care Center	1770 W. La Habra Blvd.
Park Regency Retirement Center	1750 W. La Habra Blvd.
Whittier Heights	200 W. Whittier Blvd.

## La Palma

Sunrise Assisted Living La Palma	5321 La Palma Ave.
----------------------------------	--------------------

## Los Alamitos

Alamitos West Health Care Center	3902 W Katella Ave.
Katella Senior Living Community	3952 W. Katella Ave.

## Placentia

Crescendo Senior Living of Placentia	351 E. Palm Dr.
Emerald Isle Senior Apartments	661 N. Rose Dr.
Golden Elementary School	740 E. Golden Ave
Ivy Park, Bradford	1180 N. Bradford Ave.
Kraemer Middle School	645 N. Angelina Dr.

## Seal Beach

Leisure World Seal Beach	13533 Seal Beach Blvd.
--------------------------	------------------------

## Stanton

New Horizons	8541 W. Cerritos Ave.
Rowntree Gardens	12151 Dale Ave.
Stanton Civic Center	7800 Katella Ave.

## Whittier

Whittier Glen	10615 Jordan Rd.
Whittier Hills Healthcare Center	10426 Bogardus Ave.

## Yorba Linda

Fairmont Elementary School	5241 Fairmont Blvd.
PYLUSD District Office	1301 E. Orangethorpe Ave.
PYLUSD Prof Dev Academy	4999 Casa Loma Ave.
Rose Drive Elementary School	4700 Rose Dr.
Senior Living Community	16850 Bastanchury Rd.
Serento Rosa Senior Living	17803 Imperial Hwy.
Vintage of Stonehaven	5202 Stonehaven Dr.
Yorba Linda Senior Center	4501 Casa Loma Ave.

## Helping You Succeed

You can do it – we can help! NOCE has support and services to help you succeed.

Visit [noce.edu/student-services](https://noce.edu/student-services) for more information.

### Counseling

Academic counselors help students get the most out of their education.

- Educational planning
- Support with transition to college and career
- Goal setting
- Referral to NOCE or community resources

In-person, phone or virtual appointments are available at [714.808.4682](tel:714.808.4682) or [noce.edu/counseling](https://noce.edu/counseling).



### Scholarships and Book Awards

The NOCE Scholarship and Book Award Program is designed to meet student needs and honor student achievement and leadership. NOCE offers scholarships and book awards throughout the year to assist with fees associated with books, access codes, instructional materials, or transition to credit college.

Visit [noce.edu/scholarships](https://noce.edu/scholarships).



### Food and Basic Needs Support

Pathways of Hope and NOCE provide students with non-perishable food, fresh produce, and resource information at the Anaheim Campus Food Pantry.

Visit [noce.edu/foodpantry](https://noce.edu/foodpantry).



## Free Wi-Fi

NOCE students can drive up to the Anaheim Campus, Cypress College, or Fullerton College for internet access.

Visit [noce.edu/anaheimwifi](https://noce.edu/anaheimwifi).



## Laptop Computer Loans

NOCE students taking online courses can check out a laptop for the semester.

Visit [noce.edu/laptop-loan](https://noce.edu/laptop-loan).



## Textbook Loans

Some NOCE textbooks and software are available for use while working in the High School Labs, Career Skills and Resource Lab, Basic Skills Learning Centers, or other labs on campus.



## Student E-mail

### NOCE Student E-mail – NEW in 2022 Fall Semester

All students have an NOCE e-mail to use for:

- Getting all school updates and news
- Logging into loaner laptops
- Communicating with teachers
- Connecting to campus Wi-Fi
- Accessing computer labs
- and more...

More information visit: [noce.edu/student-email](https://noce.edu/student-email).





# HIGH SCHOOL DIPLOMA AND BASIC SKILLS

Complete the high school diploma.

Prepare for college.

Get tutoring support.

Study for the GED/HiSET exam.

Explore [noce.edu/basicskills](https://noce.edu/basicskills).



**Need Translated Instructions?**

**¿Necesita instrucciones traducidas?**

Haga clic en "Traducir" en la esquina superior derecha de la página. Seleccione su idioma para traducir el sitio. O llame al 714.808.4679 para obtener más ayuda.

# Program Overview

## High School Diploma

This **FREE** program is open to adult students (18+) who want to complete their high school diploma at their own pace. All instructional materials, including textbooks, are provided for in-class use at no cost to students. This program is offered in-person at our three NOCE Centers. Select high school subjects are offered online. More info at [noce.edu/diploma](https://noce.edu/diploma). For more information on attendance, drops, and waitlist policy, please visit: [noce.edu/academic-policies](https://noce.edu/academic-policies).

### Ready to Earn Your High School Diploma?

#### Once you've applied to NOCE...

1. Complete General Orientation through myGateway at [noce.edu/mygateway](https://noce.edu/mygateway). Visit [noce.edu/orientation](https://noce.edu/orientation) for details.
2. Send official sealed transcripts from previous schools to NOCE Wilshire Center, 315 E. Wilshire Avenue, Bldg 300, Fullerton, CA 92832, ATTN: HS RECORDS.
3. Meet with a counselor: [714.808.4682](tel:714.808.4682) or [counseling@noce.edu](mailto:counseling@noce.edu).
4. Attend class at your selected high school lab to enroll in your high school subject.
  - **Anaheim Campus:** 1830 W. Romneya Drive, Room 139, Anaheim, CA 92801
  - **Cypress Center:** 9200 Valley View Street, Room TE-2/205, Cypress, CA 90630
  - **Wilshire Center:** 315 E. Wilshire Avenue, Room 117/118, Fullerton, CA 92832
5. Select high school subjects are offered online. Register for online classes using myGateway at [noce.edu/mygateway](https://noce.edu/mygateway). Attend class online by logging into Canvas at [noce.edu/canvas](https://noce.edu/canvas) on the start date.
6. CASAS assessment is required. For information, call [714.808.4607](tel:714.808.4607).

### Need Registration Help?

Visit [noce.edu/diploma-registration](https://noce.edu/diploma-registration)

#### **New and Returning Students:**

Contact StarHelp at [714.808.4679](tel:714.808.4679) or [starhelp@noce.edu](mailto:starhelp@noce.edu).

#### **Continuing Students:**

Contact your instructor to register for a high school subject.

## GED/HiSET

This program is for adults (18+) wishing to obtain a GED or HiSET certificate. NOCE prepares students to take the GED Exam. This program is offered online or as an in-person instructor-led course at the Anaheim Campus. CASAS assessment is required; for information call [714.808.4607](tel:714.808.4607). More info at [noce.edu/ged](https://noce.edu/ged). For more information on attendance, drops and waitlist policy, visit: [noce.edu/academic-policies](https://noce.edu/academic-policies).

# College Preparation

The College Preparation Program helps students develop critical thinking and language skills to succeed in college-level credit courses. Noncredit College Prep Math and English courses strengthen foundational mathematical, reading, and writing skills. More info at [noce.edu/collegeprep](https://noce.edu/collegeprep). For more information on attendance, drops, and waitlist policy, please visit: [noce.edu/academic-policies](https://noce.edu/academic-policies).

## Ready to Get Started?

### Once you've applied to NOCE...

1. Register for classes online using myGateway at [noce.edu/mygateway](https://noce.edu/mygateway). Check out [noce.edu/registration-info](https://noce.edu/registration-info) for details.
2. Attend class online by logging into Canvas at [noce.edu/canvas](https://noce.edu/canvas) on the start date.

# Basic Skills Learning Centers

Basic Skills Learning Centers are open to students in all programs and provide the skills to attain academic and employment goals! Students can work with faculty and tutors in small groups or individually on subjects such as math, grammar, and reading.

## Ready to Get Started?

### Once you've applied to NOCE...

1. Register for classes online using myGateway at [noce.edu/mygateway](https://noce.edu/mygateway). Check out [noce.edu/registration-info](https://noce.edu/registration-info) for details.
2. Attend in-person Learning Centers at:
  - **Anaheim Campus:** 1830 W. Romneya Drive, Room 140, Anaheim, CA 92801
  - **Cypress Center:** 9200 Valley View Street, Room TE-2/209, Cypress, CA 90630
3. Enroll in Supervised Tutoring for online and/or in-person academic support.

## Info Sessions

Want to learn more about the various Basic Skills Programs such as requirements, schedule, format of classes, and steps to register? Join us on Zoom: [noce.edu/info-sessions](https://noce.edu/info-sessions).

### ★ NOTE

Students taking in-person classes must adhere to the NOCCCD COVID-19 vaccine mandate or request an exemption. More information at [noce.edu/vaccine](https://noce.edu/vaccine).

## High School Diploma, In-Person Classes

This program is designed for adults (age 18+) who want to complete the requirements for a high school diploma. All instructional high school diploma subject materials are provided for in-class use at no cost to the students. **Registration for in-person high school labs is ongoing.** New diploma students, please contact StarHelp at 714.808.4679. Continuing diploma students, please contact your instructor to register for a high school subject. **CASAS assessment is required.**

NOCE Center	Room	Daytime Hours	Evening Hours	Contact number
Anaheim Campus	Room 139	Monday-Friday, 8:30a-2:45p	Monday-Thursday, 5:00p-9:00p	(714) 808-4582
Cypress Center	TE2-205	Monday-Thursday, 8:30a-2:45p Fridays, 8:30a-1:00p	Monday-Thursday, 5:00p-9:00p	(714) 484-7438
Wilshire Center	WIL 117/118	Monday-Thursday, 8:30a-2:45p Fridays, 8:30a-1:00p		(714) 992-9538

## High School Diploma, Online Classes

For more information on attendance, drops, and waitlist policy please visit: [noce.edu/academic-policies](http://noce.edu/academic-policies). **CASAS assessment is required.**

### High School Economics A

**IHSS 305**

Advisory: CASAS reading score of 228 or higher. Economics A explores the fundamental economic concepts and reasoning, the American Market Economy, the government's influence on the market economy, taxes, deficits, and the Federal Reserve Bank and the impact of these concepts on various groups, including racial, socioeconomic, and gender.

CRN	Dates	Days	Time	Location	Instructor
51639	8/15 - 9/13	Remote	Remote	ONLINE - ONLINE	Lee, Kevin
51682	10/17 - 11/15	Remote	Remote	ONLINE - ONLINE	Lee, Kevin

### High School Economics B

**IHSS 306**

Advisory: CASAS reading score of 228 or higher. Economics B explores labor markets, aggregate economic behavior, globalization, and the impact of the global economy and these concepts on various groups, including racial, socioeconomic, and gender.

CRN	Dates	Days	Time	Location	Instructor
51642	9/14 - 10/14	Remote	Remote	ONLINE - ONLINE	Lee, Kevin
51683	11/16 - 12/16	Remote	Remote	ONLINE - ONLINE	Lee, Kevin

### High School US Government A

**IHSS 310**

Advisory: CASAS reading score of 228 or higher. U.S. Government Course A explores the fundamentals of American democracy, the branches of government, evaluates the comparative governments and the challenges of democracy, and the impact of non-state actors on the global community from multiple perspectives, including race, gender, and socio-economic status.

CRN	Dates	Days	Time	Location	Instructor
51644	8/15 - 9/13	Remote	Remote	ONLINE - ONLINE	Bailey-Blenman, Jessica
51684	10/17 - 11/15	Remote	Remote	ONLINE - ONLINE	Bailey-Blenman, Jessica

### High School US Government B

**IHSS 311**

Advisory: CASAS reading score of 228 or higher. U.S. Government Course B explores the rights and responsibilities of citizens in a democracy, the fundamental principles of civil society, the electoral process, and the role of media in public life from multiple perspectives, including race, gender, and socio-economic status.

CRN	Dates	Days	Time	Location	Instructor
51645	9/14 - 10/14	Remote	Remote	ONLINE - ONLINE	Bailey-Blenman, Jessica
51685	11/16 - 12/16	Remote	Remote	ONLINE - ONLINE	Bailey-Blenman, Jessica



## High School US History A

IHSS 315

Advisory: CASAS reading score of 228 or higher. US History A explores the founding of the original thirteen colonies, the creation of a new country, causes of the Civil War, and the Reconstruction era and the impact of each of these events on racial and socio-economic groups and gender roles from multiple perspectives.

CRN	Dates	Days	Time	Location	Instructor
51648	8/15 - 9/13	Remote	Remote	ONLINE - ONLINE	Yore, Jason
51687	10/17 - 11/15	Remote	Remote	ONLINE - ONLINE	Yore, Jason

## High School US History B

IHSS 316

Advisory: CASAS reading score of 228 or higher. US History B explores post-Civil War, westward expansion, the Industrial Revolution through World War I and the impact these events on racial and socio-economic groups and gender roles from multiple perspectives and how they shape current events.

CRN	Dates	Days	Time	Location	Instructor
51649	9/14 - 10/14	Remote	Remote	ONLINE - ONLINE	Yore, Jason
51688	11/16 - 12/16	Remote	Remote	ONLINE - ONLINE	Yore, Jason

## High School US History C

IHSS 317

Advisory: CASAS reading score of 228 or higher. US History C explores the Great Depression and the New Deal, World War II, the Cold War, and US post-war foreign policy and the impact these events on racial and socio-economic groups and gender roles from multiple perspectives and how they shape current events.

CRN	Dates	Days	Time	Location	Instructor
51686	8/15 - 9/13	Remote	Remote	ONLINE - ONLINE	Yore, Jason
51650	10/17 - 11/15	Remote	Remote	ONLINE - ONLINE	Yore, Jason

## High School US History D

IHSS 318

Advisory: CASAS reading score of 228 or higher. US History D explores the Civil Rights Era, the end of the Cold War, Globalism, and contemporary America, and the impact these occurrences have on racial and socio-economic groups and gender roles from multiple perspectives and how they shape current events.

CRN	Dates	Days	Time	Location	Instructor
51651	9/14 -- 10/14	Remote	Remote	ONLINE - ONLINE	Yore, Jason
51689	11/16 - 12/16	Remote	Remote	ONLINE - ONLINE	Yore, Jason

## GED/HiSET Preparation

For more information on attendance, drops, and waitlist policy please visit: [noce.edu/academic-policies](http://noce.edu/academic-policies). CASAS assessment is required.

## GED/HiSET: Mathematics

ABED 405

GED/HiSET mathematics prepares students to pass the math section of the GED/HiSET test. The GED/HiSET pre-test identifies needed areas of instruction for each student. Scope of instruction is basic computation, analytical and reasoning skills, word problems and word problems with graphics.

CRN	Dates	Days	Time	Location	Instructor
50489	8/15 - 10/14	Remote	Remote	ONLINE - ONLINE	Tran, Tam
					<i>This course will be focused on Basic Math Skills, Problem Solving with Real Numbers, and Geometry. Optional live classes are held online on Mondays and Wednesdays, 8/29/22-10/12/22, 8 a.m. - 9 a.m.</i>
50494	10/17 - 12/16	Remote	Remote	ONLINE - ONLINE	Tran, Tam
					<i>This course will be focused on Statistics and Probability, Algebraic Expressions, Algebraic Equations, and Functions. Optional live classes are held online on Mondays and Wednesdays, 10/17/22-12/14/22, 8 a.m. - 9 a.m.</i>
50495	10/17 - 12/16	Remote	Remote	ONLINE - ONLINE	Tran, Tam
					<i>This course will be focused on Statistics and Probability, Algebraic Expressions, Algebraic Equations, and Functions. Optional live classes are held online on Mondays and Wednesdays, 10/17/22-12/14/22, 5 p.m. - 6 p.m.</i>

## GED/HiSET: Reading

**ABED 406**

GED/HiSET reading prepares students to pass the reading section of the GED test. The GED/HiSET pre-test identifies needed areas of instruction for each student. Scope of instruction includes comprehension, fiction, nonfiction, poetry, and drama.

CRN	Dates	Days	Time	Location	Instructor
50490	8/15 - 10/14	Remote	Remote	ONLINE - ONLINE	Jeanpierre, Shani
	<i>Optional live classes are held online on Tuesdays, 8/16/22-10/11/22, 10 a.m.-11:30 a.m.</i>				
51177	10/17 - 12/16	Remote	Remote	ONLINE - ONLINE	Jeanpierre, Shani
	<i>Optional live classes are held online on Tuesdays, 10/18/22-12/13/22, 10 a.m.-11:30 a.m.</i>				

## GED/HiSET: Science

**ABED 407**

GED/HiSET science prepares students to pass the science section of the GED/HiSET test. Sciences covered are life, physical, earth and space. Students learn to analyze and apply science information.

CRN	Dates	Days	Time	Location	Instructor
50491	8/15 - 10/14	Remote	Remote	ONLINE - ONLINE	Tran, Tam

## GED/HiSET: Social Studies

**ABED 408**

GED/HiSET social studies prepares students to pass the social studies section of the GED/HiSET test. The GED/HiSET pre-test identifies needed areas of instruction for each student. Scope of course covers U.S. history, world history, civics and government, geography and economics.

CRN	Dates	Days	Time	Location	Instructor
50492	8/15 - 10/14	Remote	Remote	ONLINE - ONLINE	Jeanpierre, Shani

## GED/HiSET: Language Arts and Writing

**ABED 409**

GED/HiSET writing prepares students to pass the language arts and writing section of the GED/HiSET test. The GED/HiSET pre-test identifies needed areas of instruction for each student. This course covers the writing process, grammar usage and mechanics.

CRN	Dates	Days	Time	Location	Instructor
50493	10/17 - 12/16	Remote	Remote	ONLINE - ONLINE	Jeanpierre, Shani

## College Preparation

For more information on attendance, drops, and waitlist policy please visit: [noce.edu/academic-policies](https://noce.edu/academic-policies).

## College Prep Basic Math

**ABED 110**

Advisory: Basic computer navigation skills. This noncredit course is intended for students who desire to build or strengthen foundational level mathematical skills such as the addition, subtraction, multiplication, and division of whole numbers, fractions, decimals, percents, and integers. These concepts are applied to ratios, exponents, measurements, proportions, statistics, metric conversions, and geometric shapes. In addition, these operations, along with basic number theory, are used to solve real world problems. All work will be done without a calculator.

CRN	Dates	Days	Time	Location	Instructor
50727	8/15 - 12/16	Remote	Remote	ONLINE - ONLINE	Al Rubaye, Wasan

## College Prep Pre-Algebra

**ABED 115**

Advisory: ABED 110 College Prep - Basic Math or completion of a comparable Basic Math course. This noncredit course is a review of basic math skills and an introduction to the basic principles of algebra. Topics include: Integers and algebraic expressions; operations on integers, mixed numbers and decimals, ratio, fractions, proportion and percentages; introduction of polynomials; polynomials and properties of exponents; factoring polynomials; solving linear equations and linear inequalities; graphing linear equations; equation solving and informal geometry.

CRN	Dates	Days	Time	Location	Instructor
50379	8/15 - 12/16	Remote	Remote	ONLINE - ONLINE	Funaro, Michael

## College Prep Elementary Algebra

**ABED 116**

Advisory: Knowledge of basic math skills and pre-algebra and order of operations to solve problems involving integers, fractions, and decimals. This noncredit course is an introduction to algebra. Topics include: basic operations of integers, fractions, mixed numbers and decimals, linear equations and inequalities, simplifying and evaluating expressions, solutions of linear equations, linear inequalities, systems of linear equations, graphing linear equations, exponents and polynomials, factoring polynomials, rational expressions, roots and radicals, and quadratic equations

CRN	Dates	Days	Time	Location	Instructor
50486	8/15 - 12/16	Remote	Remote	ONLINE - ONLINE	Lacuesta, George

## College Prep English Reading and Writing

**ABED 150**

Advisory: Proficient English reading skills, vocabulary, comprehension, composition writing skills and basic computer skills. This non-credit course is intended for students who desire to strengthen developmental English reading and writing skills by emphasizing a comprehensive approach to reading and writing. Topics include: academic comprehension, vocabulary development, reading efficiency, study techniques, and academic composition.

CRN	Dates	Days	Time	Location	Instructor
50381	8/15 - 12/16	Remote	Remote	ONLINE - ONLINE	Gibbons, Emilee

## Transitioning to College

### Transitioning to College

**IHSS 300**

This course is designed to help NOCE High School Diploma Program, ESL Academic Success, and all other NOCE students successfully transition to college. Topics presented will include identifying academic goals, designing an educational plan, utilizing the college processes (registration, financial aid, learning resources), and graduation. This course will include campus tours of several student resource centers.

CRN	Dates	Days	Time	Location	Instructor
51633	10/19 - 11/16	W	01:00pm-03:50pm	Anaheim Campus	Torres, Anacany

## Basic Skills Academic Learning Center and Resources

### NOCE Learning Center

**ABED 105**

Designed for students from beginning levels of reading and mathematics to those needing support for higher education. Through the use of small-group instruction, computer-aided instruction, audio books and workbooks, students will become better readers, writers and thinkers. Students may also improve their skills in mathematics. Skills attained can be used for personal growth, job advancement or for entry into other educational programs. Learning plans will be developed for each student based on student goals, needs and learning style.

CRN	Dates	Days	Time	Location	Instructor
50502	8/15 - 12/16	MTWTh	08:30am-07:50pm	Anaheim Campus - 140	Carey, Jennifer Balasi, Lilitana Tseng, Anh
					<i>Optional In-person Workshops:</i>
					• Reading, Pronunciation, and Phonics: Monday - Thursday, 10 a.m. - 10:45 a.m.
					• English Conversation Circle - Monday - Thursday, 11:30 a.m. - 12:15 p.m.
					• English Conversation Circle 2 - Monday - Thursday, 1 p.m. - 1:45 p.m.
50503	8/15 - 12/16	MTWTh	08:30am -02:35pm	Cypress Tech Ed 2 - 209	Wing, Lisa Cardiel, Juan Lee, Kevin

### Supervised Tutoring

**ABED 102**

This self-paced, open-entry/open exit non-credit course provides individualized and growth activities designed to include a learning style assessment and follow-up, assistance with acquiring study skills, and guidance in completing coursework. Designed to help students achieve outcomes related to specific courses for which tutoring is sought.

CRN	Dates	Days	Time	Location	Instructor
51665	8/15 - 12/16	Remote	Remote	ONLINE - ONLINE	Staff



# CAREER TECHNICAL EDUCATION

Earn a certificate.

Prepare for a thriving career.

Increase your earning potential.

Explore [noce.edu/careers](https://noce.edu/careers).



**Need Translated Instructions?**

**¿Necesita instrucciones traducidas?**

Haga clic en "Traducir" en la esquina superior derecha de la página. Seleccione su idioma para traducir el sitio. O llame al **714.808.4679** para obtener más ayuda.

# Program Overview

## What Do You Want to Become?

Career Technical Education (CTE) offers dynamic programs to meet the critical needs of Orange County students, industries, and communities. NOCE short-term and tuition-free vocational training allows entrance into high-demand industries and builds foundational skills to place students on the pathway to success. More info at [noce.edu/careers](https://noce.edu/careers).

### Choose Your Path: Certificate Programs at NOCE

- Administrative Professional
- Bookkeeping
- Braille Transcribing
- Business Information Worker I & II
- Classroom Essentials for Program Success
- Early Childhood Education
- Electrical Technology
- Funeral Service Assistant
- Management
- Medical Assistant
- Personal Care Aide
- Pharmacy Technician
- Quality Assurance Management for Medical Devices

### Career Pathways for English Language Learners

In partnership with our English as a Second Language (ESL) Program, we offer Business Information Worker and Personal Care Aide classes with two instructors. Students learn career-specific language and job skills to prepare them for rewarding entry-level positions. For more information, visit [noce.edu/esl/careerpathways](https://noce.edu/esl/careerpathways).

### Resources to Help You Thrive

NOCE provides many support services to help CTE students thrive in their studies, stay on track through their educational journey, and excel after graduation. More info at [noce.edu/career-services](https://noce.edu/career-services).

### Career Skills and Resource Lab

Enroll in our in-person or online labs. We offer resources and strategies to launch your career.

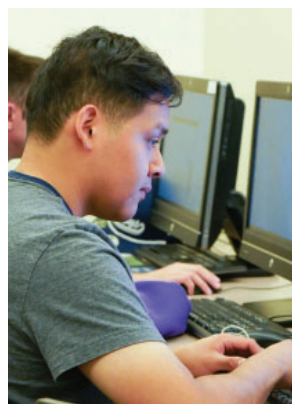
- Career Launch Academy and free access to LinkedIn Learning.
- Workshops on 21st Century Skills, job preparation, career exploration, and more.
- Resume and cover letter development, job search, and interviewing techniques.
- In-person lab offers access to computers and internet.
- Free online job board - NOCECareerConnect.



## Ready to Get Started?

### Once you've applied to NOCE...

1. Complete General Orientation in myGateway at [noce.edu/mygateway](https://noce.edu/mygateway). Pharmacy Technician students need to instead take the "NOCE CTE Pharmacy Technician Program" Orientation. Check out [noce.edu/orientation](https://noce.edu/orientation) for details.
2. Register for classes online using myGateway at [noce.edu/mygateway](https://noce.edu/mygateway). Check out [noce.edu/registration-info](https://noce.edu/registration-info) for details.
3. Meet with a counselor: 714.808.4682 or [counseling@noce.edu](mailto:counseling@noce.edu).
4. Attend class:
  - Online by logging into Canvas at [noce.edu/canvas](https://noce.edu/canvas) on the start date listed in the class schedule.
  - In person on the date, time, and at the location listed in the class schedule.



## Have Questions?

### Need Registration Help?

714.808.4679 or [starhelp@noce.edu](mailto:starhelp@noce.edu)

## Info Sessions

Want to learn more about the various CTE certificate programs such as required courses, program length, types of careers, and steps to register? Join us on Zoom: [noce.edu/info-sessions](https://noce.edu/info-sessions).

### ★ NOTE

Students taking in-person classes, labs, and/or learning centers must adhere to the NOCCCD COVID-19 vaccine mandate or request an exemption. More information at [noce.edu/vaccine](https://noce.edu/vaccine).

## Business/Office Technology

This series of certificate options to prepare students for entry-level to advanced office and administrative support in a variety of job positions, including general office clerks, retail salespersons, customer service representatives, receptionists, information clerks, administrative assistants, executive assistants, and office managers. Training includes hands-on courses in customer service, information management, and using computers. Complete the entire program to reach a higher level in your administrative skills

### Computer Basics

OTEC 091

Designed for those who know nothing or very little about computers. Builds computer technology understanding, makes one a better consumer of computers and products, and explores operation systems, software and hardware. Provides foundation for other NOCE computer course.

CRN	Dates	Days	Time	Location	Instructor
51680	9/1 - 9/22	Th	09:00am-11:50am	Anaheim Campus - 405	Moreno-Herrera, Enrique

### Software Essentials

OTEC 092

Learn the beginning basics of MS Word, MS Excel, MS PowerPoint, and MS Access in one class. This class serves as a foundation for OTEC courses.

CRN	Dates	Days	Time	Location	Instructor
51681	9/29 - 10/20	Th	09:00am-11:50am	Anaheim Campus - 405	Moreno-Herrera, Enrique

### Office Essentials

OTEC 100

A course that prepares students for an entry-level position in an office. Includes units on the office environment, becoming a professional, work ethics, and several elements of customer service. **Textbook Required.**

CRN	Dates	Days	Time	Location	Instructor
50799	8/15 - 10/7	Remote	Remote	ONLINE - ONLINE	McClurkin, Tina
				<i>Required Synchronous Zoom Meeting Dates/Times: Monday, 8/15 from 12:00pm-12:30pm</i>	
50800	10/17 - 12/9	Remote	Remote	ONLINE - ONLINE	McClurkin, Tina
				<i>Required Synchronous Zoom Meeting Dates/Times: Monday, 10/17 from 12:00pm-12:30pm</i>	

### Microsoft Outlook Fundamentals

OTEC 105

This course introduces students to Microsoft Outlook. Students will learn how to organize and manage emails, schedule appointments, create and manage task and contact records, and customize Outlook. **Textbook Required.**

CRN	Dates	Days	Time	Location	Instructor
50795	8/15 - 9/23	Remote	Remote	ONLINE - ONLINE	Loayza, Santiago
50801	9/26 - 11/4	Remote	Remote	ONLINE - ONLINE	Loayza, Santiago
51676	11/7 - 12/16	Remote	Remote	ONLINE - ONLINE	Loayza, Santiago

### Business Math for Office Technology

OTEC 110

Provides coverage of personal and business-related mathematics as well as reviewing the basic operations of arithmetic.

**Textbook Required.**

CRN	Dates	Days	Time	Location	Instructor
50804	8/15 - 10/7	Remote	Remote	ONLINE - ONLINE	Prey, Maria Josephine
50805	10/17 - 12/9	Remote	Remote	ONLINE - ONLINE	Prey, Maria Josephine

### Computer Concepts and Applications I

OTEC 210

This is the first course in a series of three courses that serves as a foundation for working in the office environment and focuses on the entry level skills students need to succeed in the workforce. Part I introduces students to fundamental workforce skills in computers and information processing; hardware; system software; networks, security, and privacy; troubleshooting and maintenance; and application software. The course series will help prepare students for the Microsoft Office Specialist (MOS) and IC3 Digital Literacy certifications. **Textbook Requirement.**

CRN	Dates	Days	Time	Location	Instructor
50789	8/15 - 10/14	Remote	Remote	ONLINE - ONLINE	Kretschmar, Judith
50790	10/17 - 12/16	Remote	Remote	ONLINE - ONLINE	Kretschmar, Judith

## Computer Concepts and Applications II

## OTEC 211

Prerequisite: OTEC 210 Computer Concepts and Applications I and COMP 685 Beginning Keyboarding or Pass the Keyboarding Challenge Exam at a rate of 35 net words a minute with five or fewer errors per minute on a 5-minute timed writing. This is the second course in a series of three courses that serves as a foundation for working in the office environment and focuses on the entry level skills students need to succeed in the workforce. Part II introduces students to fundamental workforce skills in the internet, digital ethics and awareness, cloud computing, Windows, Microsoft Word, and Microsoft Excel. The course series will help prepare students for the Microsoft Office Specialist (MOS) and IC3 Digital Literacy certifications. **Textbook Required.**

CRN	Dates	Days	Time	Location	Instructor
50796	8/15 - 11/4	Remote	Remote	ONLINE - ONLINE	Sedrak, Afraim

## Computer Concepts and Applications II A

## OTEC 200

Advisory: OTEC 200 is designed for individuals wanting to learn/enhance specific skills. If you are interested in the Business Information Worker certificate, OTEC 211 Computer Concepts and Applications II is recommended. This course is designed for students who wish to focus on specific areas within the Computer Concepts and Applications II. Part II A introduces students to fundamental workforce skills on the Internet, digital ethics and awareness, cloud computing and Windows. **Textbook Required.**

CRN	Dates	Days	Time	Location	Instructor
51669	8/15 - 10/7	Remote	Remote	ONLINE - ONLINE	Ahmed, Md Riffat

## Computer Concepts and Applications II B

## OTEC 201

Advisory: OTEC 201 is designed for individuals wanting to learn/enhance specific skills. If you are interested in the Business Information Worker certificate, OTEC 210 Computer Concepts and Applications II is recommended. This course is designed for students who wish to focus on specific areas within the Computer Concepts and Applications II. Part II B introduces students to Microsoft Word. **Textbook Required.**

CRN	Dates	Days	Time	Location	Instructor
51670	8/15 - 10/7	Remote	Remote	ONLINE - ONLINE	Ahmed, Md Riffat
51700	9/26 - 11/4	Remote	Remote	ONLINE - ONLINE	Loayza, Santiago

## Computer Concepts and Applications II C

## OTEC 202

Advisory: OTEC 202 is designed for individuals wanting to learn/enhance specific skills. If you are interested in the Business Information Worker certificate, OTEC 211 Computer Concepts and Applications II is recommended. This course is designed for students who wish to focus on specific areas within the Computer Concepts and Applications II. Part II C introduces students to fundamental workforce skills in Microsoft Excel. **Textbook Required.**

CRN	Dates	Days	Time	Location	Instructor
51671	8/15 - 10/7	Remote	Remote	ONLINE - ONLINE	Sedrak, Afraim

## Computer Concepts and Applications III

## OTEC 212

Prerequisite: OTEC 211 Computer Concepts and Applications II. This is the third course in a series of three courses that serves as a foundation for working in the office environment and focuses on the entry level skills students need to succeed in the workforce. Part III builds on the foundations learned in parts I and II and introduces students to fundamental workforce skills in Microsoft Access and Microsoft PowerPoint. The course series will help prepare students for the Microsoft Office Specialist (MOS) and IC3 Digital Literacy certifications. **Textbook Required.**

CRN	Dates	Days	Time	Location	Instructor
50792	8/15 - 10/14	Remote	Remote	ONLINE - ONLINE	Sedrak, Afraim

## Computer Concepts and Applications III A

## OTEC 205

Advisory: OTEC 205 is designed for individuals wanting to learn/enhance specific skills. If you are interested in the Business Information Worker certificate, OTEC 212 Computer Concepts and Applications III is recommended. This course serves as a foundation for working in the office environment and focuses on the entry level skills students need to succeed in the workplace. Part III A introduces students to fundamental workforce skills in Microsoft Access. The course will help prepare students for the Microsoft Office Specialist (MOS) and IC3 Digital Literacy certifications. **Textbook Required.**

CRN	Dates	Days	Time	Location	Instructor
51673	11/7 - 12/16	Remote	Remote	ONLINE - ONLINE	Sedrak, Afraim



## Computer Concepts and Applications III B

## OTEC 206

Advisory: OTEC 206 is designed for individuals wanting to learn/enhance specific skills. If you are interested in the Business Information Worker certificate, OTEC 212 Computer Concepts and Applications III is recommended. This course serves as a foundation for working in the office environment and focuses on the entry level skills students need to succeed in the workplace. Part III B introduces students to fundamental workforce skills in Microsoft PowerPoint. The course series will help prepare students for the Microsoft Office Specialist (MOS) and IC3 Digital Literacy certifications. **Textbook Required.**

CRN	Dates	Days	Time	Location	Instructor
51674	8/15 - 9/23	Remote	Remote	ONLINE - ONLINE	Loayza, Santiago
51675	11/7 - 12/16	Remote	Remote	ONLINE - ONLINE	Loayza, Santiago

## MS Office Integrated Projects

## OTEC 225

Prerequisite: OTEC 211 Computer Concepts and Applications II and OTEC 212 Computer Concepts and Applications III. This course is designed to apply knowledge and skills gained from Computer Concepts and Applications II and III to the business environment by giving students the opportunity to work in real world simulations. This is the capstone course for those students completing the Administrative Professional certificate program. **Textbook Required.**

CRN	Dates	Days	Time	Location	Instructor
50793	10/17 - 12/16	Remote	Remote	ONLINE - ONLINE	Sedrak, Afraim

## Bookkeeping

This program is designed to prepare students for a career as an entry-level bookkeeper or provide the necessary knowledge of basic bookkeeping functions for business owners or entrepreneurs. Bookkeepers maintain their employers' financial records by using accounting software and other tools. As they play such a significant role in determining their companies' success, employers want only the most highly trained and ethical bookkeepers.

## Accounting Fundamentals for Bookkeepers

## BUSA 100

Accounting fundamentals covers foundational topics, such as accounting for purchases, analyzing business transactions, and how accounting acts as the language of business. Upon completion students will understand the basics of accounting fundamentals in preparation for the bookkeeping certification exam. **Textbook Required.**

CRN	Dates	Days	Time	Location	Instructor
51132	8/15 - 10/14	Remote	Remote	ONLINE - ONLINE	Dunne, Catherine

## Accounting Principles for Bookkeepers

## BUSA 101

Prerequisite BUSA 100 Accounting Fundamentals for Bookkeepers. This course covers accounting for partnerships, long-term bonds, and the statement of cash flows, among other pieces of vital bookkeeping knowledge. The course prepares students for part two of the certification exam - Accounting Principles. **Textbook Required.**

CRN	Dates	Days	Time	Location	Instructor
51133	10/17 - 12/16	Remote	Remote	ONLINE - ONLINE	Dunne, Catherine

## Payroll Fundamentals for Bookkeepers

## BUSA 102

Prerequisite BUSA 100 Accounting Fundamentals for Bookkeepers. Payroll fundamentals covers foundational topics, such as accounting for computing wages, social security, taxes, withholdings, and analyzing and journalizing payroll transactions. Upon completion students will understand the basics of payroll fundamentals in preparation for the bookkeeping certification exam. **Textbook Required.**

CRN	Dates	Days	Time	Location	Instructor
51134	10/17 - 12/16	Remote	Remote	ONLINE - ONLINE	Dunne, Catherine

## QuickBooks Fundamentals for Financial Office Applications

COMP 650

Teaches students the basics of using the QuickBooks software to develop customized financial application for business. The course covers special techniques for reducing data entry time, eliminating errors and getting consistent results. Upon completion students will understand the basics of QuickBooks to simplify financial tasks. **Textbook Required.**

CRN	Dates	Days	Time	Location	Instructor
50784	8/15 - 10/14	Remote	Remote	ONLINE - ONLINE	Teipe, William

## Career Skills and Resources

### Career Skills and Resource Lab

WFPR 100

Free, flexible scheduling to complete and receive help on homework and training on computer, industry related and employability skills.

CRN	Dates	Days	Time	Location	Instructor
51321	8/15 - 12/12	MTWTh	10:00am-06:00pm	Anaheim Campus - 606	Staff

### Virtual Career Skills and Resource Lab

WFPR 101

Lab designed for online students to have access to seminars, assistance, and resources related to Career Technical Education and/or employment skills.

CRN	Dates	Days	Time	Location	Instructor
51170	8/15 - 10/14	Remote	Remote	ONLINE - ONLINE	McClurkin, Tina
<i>Required Synchronous Zoom Meeting Dates/Times: Monday, 8/15 from 12:30pm-1:00pm</i>					
51172	10/17 - 12/16	Remote	Remote	ONLINE - ONLINE	Teipe, William

### Build Your Career

WFPR 105

Ready to get to work? This course will help you launch your career through learning how to step out of your comfort zone, network, build communication skills, explore career options and land the jobs and internships you want.

CRN	Dates	Days	Time	Location	Instructor
51660	9/26 - 11/4	Remote	Remote	ONLINE - ONLINE	McClurkin, Tina
<i>Required Synchronous Zoom Meeting Dates/Times: Weekly on Tuesday's from 9am-10am</i>					
51668	11/7 - 12/16	Remote	Remote	ONLINE - ONLINE	McClurkin, Tina
<i>Required Synchronous Zoom Meeting Dates/Times: Weekly on Wednesday's from 1:00pm-2:00pm</i>					

## Career Pathways For English Language Learners (ELLs)

Learners with Intermediate High-level English language skills can train for a job in just 18 weeks. Classes are taught by two instructors who support student success by teaching language and job skills at the same time. For more information, including how to register: [noce.edu/esl/careerpathways](https://noce.edu/esl/careerpathways).

Programs available in 2022 Fall Semester:

- **Business Information Worker I for ELLs** - Fully online
- **Personal Care Aide for ELLs** - Hybrid  
(mostly online with some in-person meetings at the Anaheim Campus)

## Computer - Keyboarding

### Computer Keyboarding - Beginning

COMP 685

Stop hunting and pecking at the keyboard with this short course. Learn the keyboard layout to build speed and accuracy. Course covers proper technique at the computer keyboard as well as 10-key keyboarding.

CRN	Dates	Days	Time	Location	Instructor
50813	8/15 - 10/14	Remote	Remote	ONLINE - ONLINE	Casper, Judith
	<i>Students required to perform synchronous assessment sessions with instructor via Zoom. Dates/Times to be arranged.</i>				
50815	8/15 - 10/14	Remote	Remote	ONLINE - ONLINE	Prey, Maria Josephine
	<i>Students required to perform synchronous assessment sessions with instructor via Zoom. Dates/Times to be arranged last 3 weeks of the course.</i>				
50817	8/15 - 10/14	Remote	Remote	ONLINE - ONLINE	Prey, Maria Josephine
	<i>Students required to perform synchronous assessment sessions with instructor via Zoom. Dates/Times to be arranged last 3 weeks of the course.</i>				
50818	8/15 - 10/14	Remote	Remote	ONLINE - ONLINE	Kretschmar, Judith
	<i>Students required to perform synchronous assessment sessions with instructor via Zoom. Dates/Times to be arranged.</i>				
50819	10/17 - 12/16	Remote	Remote	ONLINE - ONLINE	Casper, Judith
	<i>Students required to perform synchronous assessment sessions with instructor via Zoom. Dates/Times to be arranged.</i>				
50820	10/17 - 12/16	Remote	Remote	ONLINE - ONLINE	Prey, Maria Josephine
	<i>Students required to perform synchronous assessment sessions with instructor via Zoom. Dates/Times to be arranged last 3 weeks of the course.</i>				
50822	10/17 - 12/16	Remote	Remote	ONLINE - ONLINE	Prey, Maria Josephine
	<i>Students required to perform synchronous assessment sessions with instructor via Zoom. Dates/Times to be arranged last 3 weeks of the course.</i>				
50823	10/17 - 12/16	Remote	Remote	ONLINE - ONLINE	Kretschmar, Judith
	<i>Students required to perform synchronous assessment sessions with instructor via Zoom. Dates/Times to be arranged.</i>				

### Computer Keyboarding - Mastery I

COMP 510

Prerequisite: The student must be able to key 35 net words per minute (nwpm) timed writing or have completed COMP 685 Computer Keyboarding - Beginning with a pass grade. The first of two keyboarding courses designed to increase keying speed and accuracy to employment levels of 50+ nwpm. **Access Code Purchase Required.**

CRN	Dates	Days	Time	Location	Instructor
50807	8/15 - 10/7	Remote	Remote	ONLINE - ONLINE	Casper, Judith
	<i>Students required to perform synchronous assessment sessions with instructor via Zoom. Dates/Times to be arranged.</i>				
50809	10/17 - 12/9	Remote	Remote	ONLINE - ONLINE	Casper, Judith
	<i>Students required to perform synchronous assessment sessions with instructor via Zoom. Dates/Times to be arranged.</i>				

### Computer Keyboarding - Mastery II

COMP 511

Prerequisite: The student must have completed COMP 510 Computer Keyboarding - Mastery I with a pass grade. The second of two keyboarding courses designed to increase and maintain keying speed and accuracy to employment levels of 50+ net words per minute (nwpm). **Access Code Purchase Required.**

CRN	Dates	Days	Time	Location	Instructor
50810	8/15 - 10/7	Remote	Remote	ONLINE - ONLINE	Casper, Judith
	<i>Students required to perform synchronous assessment sessions with instructor via Zoom. Dates/Times to be arranged.</i>				
50811	10/17 - 12/9	Remote	Remote	ONLINE - ONLINE	Casper, Judith
	<i>Students required to perform synchronous assessment sessions with instructor via Zoom. Dates/Times to be arranged.</i>				

## Computer - Software

NOCE offers a variety of noncredit computer classes to help students develop computer skills.

### Windows Operating Systems - Introduction

**MS 104**

Learn the newest Windows operating system; includes desktop and file management, security, adding hardware and software, personalizing Windows XP, making connections and communicating with other people.

CRN	Dates	Days	Time	Location	Instructor
50765	8/15 - 10/14	Remote	Remote	HYBRID	Ahmed, Md Riffat
	8/25 - 10/6	Th	06:00pm-08:50pm	Anaheim Campus - 405	Ahmed, Md Riffat
	<i>Required In-Person Dates/Times: Aug 25, Sept 15, and Oct 6 from 6:00pm-8:50pm</i>				
50767	10/17 - 12/16	Remote	Remote	ONLINE - ONLINE	Ahmed, Md Riffat

### Microsoft Word - Intermediate

**MS 134**

Advisory: COMP 100 Computer - Introduction, MS 104 Window Operating Systems - Introduction, MS 144 Microsoft Word - Introduction or equivalent. This continuing course covers features such as mail merging, styles and templates, large documents and WordArt. Textbook purchase may be required at first class.

CRN	Dates	Days	Time	Location	Instructor
51679	10/17 - 12/16	Remote	Remote	HYBRID	Ahmed, Md Riffat
	10/27 - 12/8	Th	06:00pm-08:50pm	Anaheim Campus - 405	Ahmed, Md Riffat
	<i>Required In-Person Dates/Times: Oct 27, Nov 17, and Dec 8 from 6:00pm-8:50pm</i>				

### Microsoft Excel - Introduction

**MS 105**

Advisory: Knowledge of Windows. Provides a basic working knowledge of this popular spreadsheet program. Covers topics such as formulas, functions, and charting.

CRN	Dates	Days	Time	Location	Instructor
50774	8/16 - 10/11	T	06:00pm-09:50pm	Anaheim Campus - 405	DeBiase, Vincent

### Microsoft Excel - Power-User Skills

**MS 165**

Advisory: MS 105 Microsoft Excel - Introduction or equivalent. This course is for people who are comfortable using MS Excel and who want to develop "power skills". Topics include computational techniques (defining names, nested IF functions, summarizing data), using Excel's database tools (tables, database operations, lookup functions), and expert skills (conditional formatting, macros). Also covered are advanced formatting techniques and shortcuts for accelerating productivity.

CRN	Dates	Days	Time	Location	Instructor
50781	10/18 - 12/13	T	06:00pm-09:50pm	Anaheim Campus - 405	DeBiase, Vincent

### Microsoft Publisher - Introduction

**MS 143**

Advisory: Recommended proficiency in COMP 100 Computers - Introduction and MS 104 Windows Operating Systems - Introduction. Provides a basic working knowledge of this popular desktop publishing program. Covers topics such as flyers, newsletters, and business cards.

CRN	Dates	Days	Time	Location	Instructor
51677	8/15 - 10/14	Remote	Remote	HYBRID	Loayza, Santiago
	8/24 - 10/5	W	06:00pm-08:50pm	Anaheim Campus - 405	Loayza, Santiago
	<i>Required In-Person Dates/Times: Aug 24, Sept 14, and Oct 5 from 6:00pm-8:50pm</i>				
51678	10/17 - 12/16	Remote	Remote	ONLINE - ONLINE	Loayza, Santiago

### Microsoft Office - Overview

**MS 160**

Advisory: Knowledge of Windows and keyboarding. Learn the basics of Word, Excel, PowerPoint and Access in one class. Topics include document formatting, working with graphics, basic formulas, queries and reports. This class serves as a foundation for other MS Office Courses.

CRN	Dates	Days	Time	Location	Instructor
50769	8/15 - 10/14	Remote	Remote	HYBRID	Kretschmar, Judith
	8/24 - 10/5	W	11:00am-12:50pm	Anaheim Campus - 405	Kretschmar, Judith
	<i>Required In-Person Dates/Times: Aug 24, Sept 14, and Oct 5 from 11:00am-1:00pm</i>				
50770	10/17 - 12/16	Remote	Remote	ONLINE - ONLINE	Kretschmar, Judith

## Early Childhood Development

NOCE's Early Childhood Education (ECE) Certificate Program provides the beginning steps to prepare for your new career. The ECE Program offers four certificate options focusing on childcare, educational support, and the management of childcare programs in a variety of private facilities. Complete the program to earn a certificate and begin your childcare career.

### Early Childhood Development

### ECED 100

An introduction to the developmental stages of children from prenatal to middle childhood with emphasis on the physical, cognitive, language and social/emotional milestones. Application of developmental and learning theories addressed. This course is part of a program approved by the California Department of Social Services for employment in private facilities. **Textbook Required.**

CRN	Dates	Days	Time	Location	Instructor
51118	8/15 - 10/14	Remote	Remote	ONLINE - ONLINE	Hill-West, Jami
	<i>Optional Synchronous Zoom Meetings - Monday's: 8/15, 8/29, 9/12, 9/26, and 10/10 from 5pm-6pm</i>				
51119	10/17 - 12/16	Remote	Remote	ONLINE - ONLINE	Hill-West, Jami
	<i>Optional Synchronous Zoom Meetings - Monday's: 10/17, 10/31, 11/14, 11/28, and 12/12 from 5pm-6pm</i>				

### Family and Community Relationships

### ECED 105

Examination of the sociological relationships between family and society; institutional, racial, social, and economical factors affecting the family and the child. This course is part of a program approved by the California Department of Social Services for employment in private facilities. **Textbook Required.**

CRN	Dates	Days	Time	Location	Instructor
51120	8/15 - 10/14	Remote	Remote	ONLINE - ONLINE	Sueng, Suchen
	<i>Optional Synchronous Zoom Meetings - Tuesday's: 8/16, 8/30, 9/13, and 9/27 from 5:30pm-6:30pm</i>				
51121	10/17-12/16	Remote	Remote	ONLINE - ONLINE	Sueng, Suchen
	<i>Optional Synchronous Zoom Meetings - Tuesday's: 10/18, 11/1, 11/15, and 11/29 from 5:30pm-6:30pm</i>				

### Early Childhood Education: Principles and Practice

### ECED 110

Course examines the history, basic principles, and philosophies of various types of early childhood programs, emphasizing the role of the adult and characteristics of quality programs. This course is part of a program approved by the California Department of Social Services, Community Care Licensing, for employment in private facilities only. This course is part of a program approved by the California Department of Social Services for employment in private facilities. **Textbook Required.**

CRN	Dates	Days	Time	Location	Instructor
51122	8/15 - 10/14	Remote	Remote	ONLINE - ONLINE	Sueng, Suchen
	<i>Optional Synchronous Zoom Meetings - Wednesday's: 8/17, 8/31 9/14, and 9/28 from 6:00pm-8:00pm</i>				

### Child Health and Safety

### ECED 115

For teachers and directors of pre-schools, this course will focus on the skills and knowledge needed for developing emergency plans and responding to health and safety issues in the classroom. This course is part of a program approved by the California Department of Social Services for employment in private facilities. **Textbook Required.**

CRN	Dates	Days	Time	Location	Instructor
51124	10/17 - 12/16	Remote	Remote	ONLINE - ONLINE	Sueng, Suchen
	<i>Optional Synchronous Zoom Meetings - Tuesday's: 10/18, 11/1, 11/15, and 11/29 from 7:00pm-8:00pm</i>				

### Early Childhood Education: Science and Math

### ECED 200

Plan, organize and implement activities that help children develop skills, appreciation and enthusiasm for science and math. This course is part of a program approved by the California Department of Social Services for employment in private facilities. **Textbook Required.**

CRN	Dates	Days	Time	Location	Instructor
51128	8/15 - 10/14	Remote	Remote	ONLINE - ONLINE	Hill-West, Jami

### Early Childhood Education: Creative Experiences

### ECED 220

In this course, students explore and experience how developmentally appropriate creative experiences can enhance children's learning while developing fine motor, creative expression and problem-solving skills. This course is part of a program approved by the California Department of Social Services for employment in private facilities.

CRN	Dates	Days	Time	Location	Instructor
51587	8/15 - 10/14	Remote	Remote	ONLINE - ONLINE	Sueng, Suchen
	<i>Optional Synchronous Zoom Meetings - Tuesday's: 8/16, 8/30, 9/13, and 9/27 from 7:00pm-8:00pm</i>				

## Curriculum for Early Childhood Education, Introduction ECED 120

Prerequisite: ECED 100: Early Childhood Development. This course provides the foundation for curriculum planning, implementation, observation, assessment and evaluation. Emphasis includes modalities, learning styles, environments, activities, schedules, routines and adaptations to facilitate learning for all children. This course is part of a program approved by the California Department of Social Services for employment in private facilities. This course is part of a program approved by the California Department of Social Services for employment in private facilities. **Textbook Required.**

CRN	Dates	Days	Time	Location	Instructor
51125	10/17 - 12/16	Remote	Remote	HYBRID	Hill-West, Jami
	11/2 - 12/7	W	06:00pm-08:50pm	Anaheim Campus	Hill-West, Jami

*Required In-Person Dates/Times: Wednesday, Nov 2nd & Dec 7th from 6:00pm-8:50pm*

## Children with Special Needs ECED 205

This course offers a broad study of children with special needs and early childhood education as it relates to inclusion. This course covers federal and state laws and regulations, terminology and definitions, appropriate practices and intervention. This course is part of a program approved by Department of Social Services, Community Care Licensing. This course is part of a program approved by the California Department of Social Services for employment in private facilities. **Textbook Required.**

CRN	Dates	Days	Time	Location	Instructor
51126	10/17 - 12/16	Remote	Remote	ONLINE - ONLINE	Sueng, Suchen

*Optional Synchronous Zoom Meetings - Wednesday's: 10/19, 11/2, 11/16, and 11/30 from 5:30pm-6:30pm*

## Infant-Toddler Care and Education ECED 210

This course explores the theories, principles and practices of an infant/toddler program. Content includes respectful, responsive care giving; licensing and regulation issues; and enriching, safe, healthy developmentally appropriate environments. This course is part of a program approved by the California Department of Social Services for employment in private facilities. **Textbook Required.**

CRN	Dates	Days	Time	Location	Instructor
51127	8/15 - 10/14	Remote	Remote	ONLINE - ONLINE	Hill-West, Jami

## Electrical Technology

Prepare for a career in the electrical field with training at NOCE. Our Electrical Technology (ET) Certificate offers practical training to install, maintain, and repair electrical equipment and systems. The ET Certificate Program prepares students for entry-level employment in numerous electrical and electrical-related trades. The program integrates electrical theory with a hands-on application where students receive practical training to develop the foundational skills necessary to install, maintain, and repair electrical equipment and systems in residential, commercial, and industrial buildings.

## Electrical Trades Mathematics I ELET 175

A study of mathematics used in the electrical and construction trades including topics such as arithmetic, fractions, decimals, percents, graphing, measurement, and an introduction to algebra. **Textbook Required.**

CRN	Dates	Days	Time	Location	Instructor
51629	8/17 - 12/14	W	06:00pm-08:50pm	Anaheim Campus - 504	Massia, Freddy

## Electrical Conduit Bending ELET 180

This course is a study of how to properly calculate, layout, and bend Electrical Metallic Tubing (EMT) and Rigid Metal Conduit (RMC) per industry and National Electrical Code standards. This course utilizes both hand bending tools and the use of mechanical and machine type bending equipment.

CRN	Dates	Days	Time	Location	Instructor
51631	8/16 - 12/13	T	06:00pm-08:50pm	Anaheim Campus - 504	Massia, Freddy

## National Electrical Code - Industrial ELET 192

This course covers the National Electrical Code requirements for industrial application. Materials and wiring methods for heavy industrial applications, life safety, and hazardous systems are included. **Textbook Required.**

CRN	Dates	Days	Time	Location	Instructor
51620	8/18 - 12/15	Th	06:00pm-08:50pm	Anaheim Campus - 402A/B	Faessel, Stephen

## Funeral Service Assistant

Prepare for a career in the funeral services field with training at NOCE. If you enjoy talking to others and looking for ways to help people. Consider the Funeral Service Assistant Program. It provides an overview of the funeral service industry and offers training on how to start as a funeral assistant. The program is a pathway for interested students to transition to Cypress College's mortuary science associate and baccalaureate degrees.

### Introduction to Funeral Service Practice

**FSRV 100**

This course is an introduction to the funeral service profession and career opportunities. Topics covered include personal characteristics, professional responsibilities, ethical behavior, funeral service settings, mortuary law, and communication skills.

**Textbook Required.**

CRN	Dates	Days	Time	Location	Instructor
50760	8/15 - 10/14	Remote	Remote	ONLINE - ONLINE	Ojeda, Gary

### Communication Skills for the Funeral Assistant

**FSRV 110**

**Prerequisite:** FSRV 100 Introduction to Funeral Service Practice. This class will prepare the student to provide support to client families in grief, bereavement, and mourning, and communicate effectively with the public. Topics include an exploration of cultural differences in grief and funeralization practices, as well as the diversity of religious beliefs impacting disposition options. **Textbook Required.**

CRN	Dates	Days	Time	Location	Instructor
50761	10/17 - 12/16	Remote	Remote	ONLINE - ONLINE	Ojeda, Gary

### Computers in Healthcare and EHR, Introduction

**MEDA 101**

**Prerequisite:** COMP 685 Computer Keyboarding - Beginning. This course is an introduction to computers for individuals entering the health care field. This course provides a general introduction to computer literacy and information technology for health care students. Students will learn and exercise the practical use of EHR in administrative roles within the allied health field. **Textbook Required.**

CRN	Dates	Days	Time	Location	Instructor
50907	8/15 - 10/14	Remote	Remote	ONLINE - ONLINE	Kane, Raenie
				<i>Optional Synchronous Zoom Meetings - Every Monday, 11am-12pm</i>	
50908	10/17 - 12/16	Remote	Remote	ONLINE - ONLINE	Kane, Raenie
				<i>Optional Synchronous Zoom Meetings - Every Monday, 11am-12pm</i>	

## Management

NOCE's Management Certificate trains students for a manager promotion. The program will prepare students for first-line supervisory or management positions. Students will learn management principles and develop basic skills in decision-making, problem-solving, planning, organizing, speaking, and writing. The course sequence builds a knowledge base to enhance effectiveness on the job through topics such as leadership development, business law, finance, negotiations, marketing, and more.

### Elements of Supervision

**BMGR 410**

Provides instruction in communication, problem solving, team building and leadership. Designed for managers in both public and nonprofit organizations. **Textbook Required.**

CRN	Dates	Days	Time	Location	Instructor
50750	8/15 - 9/23	Remote	Remote	ONLINE - ONLINE	Baltazar, Ramon

### Management Skills I

**BMGR 412**

This course provides an overview of the functions of the management process and its practical applications in a business environment. The course focuses on the planning process and organizing skills, including decision-making, strategic planning, delegating and staffing. Students will learn management principles that provide basic guidelines for supervisory decisions and actions. **Textbook Required.**

CRN	Dates	Days	Time	Location	Instructor
50751	8/15 - 9/23	Remote	Remote	ONLINE - ONLINE	Baltazar, Ramon

## Written Communications for Business

**BMGR 415**

Provides extensive hands-on experience with all types of written business communications including letters, resumes, cover letters, memos, and reports.

CRN	Dates	Days	Time	Location	Instructor
50746	8/15 - 9/23	Remote	Remote	ONLINE - ONLINE	Dunne, Catherine

## Finance for the Non-Financial Manager

**BMGR 431**

This course introduces students to the basics of business finance for the non-financial manager. Financial statements will be covered along with discussions on sales and expenses, assets and liabilities, budgeting and planning, and financial analysis.

**Textbook Required.**

CRN	Dates	Days	Time	Location	Instructor
50747	11/7 - 12/16	Remote	Remote	ONLINE - ONLINE	Baltazar, Ramon

## Management Skills II

**BMGR 610**

This course focuses on developing management skills in working with individuals and teams to promote productivity, quality and innovation. Topics include employee performance appraisal, performance management, work groups, and the control process for keeping people, plans and programs on track. **Textbook Required.**

CRN	Dates	Days	Time	Location	Instructor
50753	9/26 - 11/4	Remote	Remote	ONLINE - ONLINE	Baltazar, Ramon

## Successful Negotiations

**BMGR 421**

This course is designed to plan and achieve business objectives and effect change through effective negotiating tactics and strategies, discover the art of persuasion in an ethical, empathetic, and assertive way, and develop confidence to influence and overcome psychological barriers and biases to achieve better outcomes. **Textbook Required.**

CRN	Dates	Days	Time	Location	Instructor
50755	9/26 - 11/4	Remote	Remote	ONLINE - ONLINE	Berry, Nera

## Introduction to Employment Law

**BMGR 423**

This course introduces the legal system, court structure, and laws governing the employer-employee relationship. It defines the employee status and common contracts, and examines unlawful practices by an employer, obligations of an employee, the principles of non-discrimination, harassment, labor laws, and the time limit to bring actions are also discussed. **Textbook Required.**

CRN	Dates	Days	Time	Location	Instructor
50752	8/15 - 9/23	Remote	Remote	ONLINE - ONLINE	Berry, Nera

## Understanding Business Contracts

**BMGR 452**

This course is an overview of basic contract principles and explores the meaning and effect of common contracts clauses. Topics covered include the different types of contracts, defenses available to the enforcement of a contract, subsequent remedies for the breach of a contract, and alternatives in the absence of a contract. **Textbook Required.**

CRN	Dates	Days	Time	Location	Instructor
50749	11/7 - 12/16	Remote	Remote	ONLINE - ONLINE	Berry, Nera

## Marketing Principles

**BMGR 430**

Introduces the student to the marketing principles of product, price, distribution and promotion in support of goods and services. The course will focus on real world application and current business case studies. The student will learn to apply marketing skills in the development of a marketing plan.

CRN	Dates	Days	Time	Location	Instructor
50748	11/7 - 12/16	Remote	Remote	ONLINE - ONLINE	Baltazar, Ramon

## Effective Business Presentations

**BMGR 417**

This course provides instruction and practice in business presentation skills. Students will learn techniques to enhance their ability to speak before any size group with more confidence and communicate their message effectively. Students are encouraged to participate in a video tape exercise for their own assessment of strengths and weaknesses. **Textbook Required.**

CRN	Dates	Days	Time	Location	Instructor
50754	9/26 - 11/4	Remote	Remote	ONLINE - ONLINE	Baltazar, Ramon



## Medical Assistant

NOCE's Medical Assistant Certificate provides the first steps to enter a new career. This program will prepare students for an entry-level position as a medical assistant in an administrative and/or a clinical setting. The program consists of courses that prepare students with the knowledge and skills needed to perform a medical assistant's tasks in medical and healthcare settings.

### Medical Assistant, Core Concepts

### MEDA 100

Explores past history and current issues of healthcare; the health care field; the role of the Medical Assistant; ethics and law for medical assistants; customer service; communication/cultural competencies in healthcare; student success; math skills for healthcare; safety in healthcare; and job skills and the professional portfolio. **Textbook Required.**

CRN	Dates	Days	Time	Location	Instructor
50905	8/15 - 10/14	Remote	Remote	ONLINE - ONLINE	Tarango, Courtney
51117	8/15 - 10/14	Remote	Remote	ONLINE - ONLINE	Tarango, Courtney
50906	10/17 - 12/16	Remote	Remote	ONLINE - ONLINE	Tarango, Courtney
50994	10/17 - 12/16	Remote	Remote	ONLINE - ONLINE	Tarango, Courtney

### Computers in Healthcare and EHR, Introduction

### MEDA 101

Prerequisite: COMP 685 Computer Keyboarding - Beginning. This course is an introduction to computers for individuals entering the health care field. This course provides a general introduction to computer literacy and information technology for health care students. Students will learn and exercise the practical use of EHR in administrative roles within the allied health field. **Textbook Required.**

CRN	Dates	Days	Time	Location	Instructor
50907	8/15 - 10/14	Remote	Remote	ONLINE - ONLINE <i>Optional Synchronous Zoom Meetings - Every Monday, 11am-12pm</i>	Kane, Raenie
50908	10/17 - 12/16	Remote	Remote	ONLINE - ONLINE <i>Optional Synchronous Zoom Meetings - Every Monday, 11am-12pm</i>	Kane, Raenie

### Medical Assistant Administrative

### MEDA 110

Prerequisite: COMP 685 Computer Keyboarding - Beginning, and MEDA 100 Medical Assistant, Core Concepts, and MEDO 105 Medical Terminology. Co-requisite: MEDA 111 Medical Assistant Administrative Lab. This course introduces students to medical office procedures in preparation for entry-level positions in the administrative or reception area of a medical facility. Students review reception techniques, computers in the medical clinic, telecommunications, scheduling, medical record management, and written communications. **Textbook Required.**

CRN	Dates	Days	Time	Location	Instructor
50909	8/15 - 10/7	Remote	Remote	ONLINE - ONLINE	Bacon, Amy
50910	10/17 - 12/9	Remote	Remote	ONLINE - ONLINE	Bacon, Amy

### Medical Assistant Administrative Lab

### MEDA 111

Prerequisite: COMP 685 Computer Keyboarding - Beginning, and MEDA 100 Medical Assistant, Core Concepts, and MEDO 105 Medical Terminology. Co-requisite: MEDA 110 Medical Assistant Administrative. This course introduces students to medical office procedures in preparation for entry-level positions in the administrative or reception area of a medical facility. Students review reception techniques, computers in the medical clinic, telecommunications, scheduling, medical record management, and written communications. **Textbook Required.**

CRN	Dates	Days	Time	Location	Instructor
50926	8/15 - 10/7	Remote	Remote	ONLINE - ONLINE	Bacon, Amy
50927	10/17 - 12/9	Remote	Remote	ONLINE - ONLINE	Bacon, Amy

### Medical Assistant Electronic Health Records

### MEDA 120

Prerequisite: COMP 685 Computer Keyboarding - Beginning, and MEDA 100 Medical Assistant, Core Concepts, and MEDO 105 Medical Terminology, and MEOC 210 Introduction of Computers for Health Care Workers. Co-requisite: MEDA 121 Medical Assistant Electrical Health Records. This course introduces students to the fundamental concepts of working with Electronic Health Records (EHRs). Students will learn and exercise the practical use of EHR in administrative roles within the allied health field. Topics covered include: the history of EHR, EHR standards, patient charts, and EHR regulations. **Textbook Required.**

CRN	Dates	Days	Time	Location	Instructor
51102	8/15 - 9/23	Remote	Remote	ONLINE - ONLINE	Echolds, Nora
51103	11/7 - 12/16	Remote	Remote	ONLINE - ONLINE	Echolds, Nora

## Medical Assistant Electronic Health Records Lab

## MEDA 121

Prerequisite: COMP 685 Computer Keyboarding - Beginning, and MEDO 105 Medical Terminology, and MEOC 210 Introduction of Computers for Health Care Workers. Co-requisite: MEDA 120 Medical Assistant Electronic Health Records. This course introduces students to the fundamental concepts of working with Electronic Health Records (EHRs). Students will practice setting up EHR features, creation and administration of patient charts, and using clinical administrative tools. **Textbook Required.**

CRN	Dates	Days	Time	Location	Instructor
51104	8/15 - 9/23	Remote	Remote	ONLINE - ONLINE	Echolds, Nora
51105	11/7 - 12/16	Remote	Remote	ONLINE - ONLINE	Echolds, Nora

## Medical Assistant Financial Concepts

## MEDA 130

Prerequisite: COMP 685 Computer Keyboarding - Beginning, and MEDA 100 Medical Assistant, Core Concepts, and MEDO 105 Medical Terminology. Co-requisite: MEDA 131 Medical Assistant Financial Concepts Lab. This course discusses the theory of financial management for a medical assistant. Topics covered include medical insurance, medical coding, daily financial practices, billing and collections, and general accounting practices. **Textbook Required.**

CRN	Dates	Days	Time	Location	Instructor
50913	8/15 - 10/7	Remote	Remote	ONLINE - ONLINE	Bacon, Amy
51106	10/17 - 12/9	Remote	Remote	ONLINE - ONLINE	Bacon, Amy

## Medical Assistant Financial Concepts Lab

## MEDA 131

Prerequisite: COMP 685 Computer Keyboarding - Beginning, and MEDO 105 Medical Terminology, and MEDA 100 Medical Assistant, Core Concepts. Co-requisite: MEDA 130 Medical Assistant Financial Concepts. This course develops the necessary skills for financial management for a medical assistant. Topics covered include medical insurance, medical coding, daily financial practices, billing and collections, and general accounting practices in a direct hands on, simulated environment. **Textbook Required.**

CRN	Dates	Days	Time	Location	Instructor
50914	8/15 - 10/7	Remote	Remote	ONLINE - ONLINE	Bacon, Amy
51107	10/17 - 12/9	Remote	Remote	ONLINE - ONLINE	Bacon, Amy

## Medical Billing, Introduction

## MEDA 140

Prerequisite: COMP 685 Computer Keyboarding - Beginning, and MEOC 210 Introduction of Computers for Health Care Workers. Co-requisite: MEDA 141 Medical Billing Lab, Introduction. An overview of outpatient medical insurance billing in preparing students for entry-level positions. Includes review of theory of data entry for private, PPO, Medicare, Medicaid/Medi-Cal, TRICARE/CHAMPUS and workers' compensation Medicaid/Medi-Cal, TRICARE/CHAMPUS and workers' compensation billing. Current CPT and ICD coding is also covered. **Textbook Required.**

CRN	Dates	Days	Time	Location	Instructor
50915	8/15 - 10/7	Remote	Remote	ONLINE - ONLINE	Echolds, Nora
50916	10/17 - 12/9	Remote	Remote	ONLINE - ONLINE	Echolds, Nora

## Medical Billing Lab, Introduction

## MEDA 141

Prerequisite: COMP 685 Computer Keyboarding - Beginning, and MEDA 101 Computers in Healthcare and EHR, or MEOC 210 Introduction of Computers for Health Care Workers. Co-requisite: MEDA 140 Medical Billing, Introduction. An overview of outpatient medical insurance billing in preparing students for entry-level positions. Includes practice of data entry for private, PPO, Medicare, Medicaid/Medi-Cal, TRICARE/CHAMPUS and workers' compensation billing. Current CPT and ICD coding is also covered. **Textbook Required.**

CRN	Dates	Days	Time	Location	Instructor
50917	8/15 - 10/7	Remote	Remote	ONLINE - ONLINE	Echolds, Nora
50918	10/17 - 12/9	Remote	Remote	ONLINE - ONLINE	Echolds, Nora

## Medical Assistant Clinical Procedures Theory I

## MEDA 200

Prerequisite: MEDO 105 Medical Terminology, and MEDA 100 Medical Assistant, Core Concepts. Co-requisite: MEDA 201 Medical Assistant Clinical Procedures Lab I. This course reviews the theory of clinical procedures. Students review performing exam room procedures, including medical asepsis, infection control, patient intake, vital signs, and assisting with physical examination, specialty exams, electrocardiograph, assisting physicians with minor surgical procedures, pharmacology, laboratory procedures, nutrition, patient education, diagnostic imaging, and urgent care and emergency procedures. **Textbook Required.**

CRN	Dates	Days	Time	Location	Instructor
50919	8/15 - 10/14	Remote	Remote	ONLINE - ONLINE	Kane, Raenie
			Optional Synchronous Zoom Meeting - Every Monday, 1pm-2pm		
51108	10/17 - 12/16	Remote	Remote	ONLINE - ONLINE	Kane, Raenie
			Optional Synchronous Zoom Meeting - Every Monday, 1pm-2pm		

## Medical Assistant Clinical Procedures Lab I

## MEDA 201

*Prerequisite:* MEDO 105 Medical Terminology, and MEDA 100 Medical Assistant, Core Concepts. *Co-requisite:* MEDA 200 Medical Assistant Clinical Procedures Theory I. This course develops skills needed for students to work in a clinical environment. Students will have hands-on practice of the following skills: exam room procedures, medical asepsis, infection control, patient intake, vital signs, assisting with physical examination, specialty exams, electrocardiograph, public health education, assisting physicians with minor surgical procedures, pharmacology, laboratory procedures, nutrition, patient education, diagnostic imaging, and urgent care and emergency procedures. **Textbook Required.**

CRN	Dates	Days	Time	Location	Instructor
50920	8/15 - 10/14	Remote	Remote	HYBRID	Kane, Raenie
	9/13 - 10/4	T	09:00am-11:50am	Anaheim Campus - 510	Kane, Raenie
	<i>Required In-Person Dates/Times: Sept 13, Sept 27, and Oct 4 from 9:00am-12:00pm</i>				
50921	8/15 - 10/14	Remote	Remote	HYBRID	Kane, Raenie
	9/13 - 10/4	T	06:30pm-09:20pm	Anaheim Campus - 510	Kane, Raenie
	<i>Required In-Person Dates/Times: Sept 13, Sept 27, and Oct 4 from 6:30pm-9:30pm</i>				
50938	10/17 - 12/16	Remote	Remote	HYBRID	Kane, Raenie
	11/15 - 12/6	T	09:00am-11:50am	Anaheim Campus - 510	Kane, Raenie
	<i>Required In-Person Dates/Times: Nov 15, Nov 29, and Dec 6 from 9:00am-12:00pm</i>				
51109	10/17 - 12/16	Remote	Remote	HYBRID	Kane, Raenie
	11/15 - 12/6	T	06:30pm-09:20pm	Anaheim Campus - 510	Kane, Raenie
	<i>Required In-Person Dates/Times: Nov 15, Nov 29, and Dec 6 from 6:30pm-9:30pm</i>				

## Medical Assistant Clinical Procedures Lab II

## MEDA 211

*Prerequisite:* MEDA 201 Medical Assistant Clinical Procedures Lab I. *Corequisite:* MEDA 210 Medical Assistant Clinical Procedures Theory II. This course develops skills needed for students to work in a clinical environment. Students will have hands-on practice of the following skills: assisting in minor procedures, creating a sterile environment, wound care, using a microscope, specimen collection, specimen processing, administering medications, injections, and venipuncture. **Textbook Required.**

CRN	Dates	Days	Time	Location	Instructor
50923	8/15 - 10/14	Remote	Remote	HYBRID	Uy, Audrey
	9/12 - 10/3	M	06:30pm-09:20pm	Anaheim Campus - 510	Uy, Audrey
	<i>Required In-Person Dates/Times: Sept 12, Sept 19, Sept 26, and Oct 3 from 6:30pm-9:30pm</i>				
50924	8/15 - 10/14	Remote	Remote	HYBRID	Uy, Audrey
	9/14 - 10/5	W	06:30pm-09:20pm	Anaheim Campus - 510	Uy, Audrey
	<i>Required In-Person Dates/Times: Sept 14, Sept 21, Sept 28, and Oct 5 from 6:30pm-9:30pm</i>				
50939	10/17 - 12/16	Remote	Remote	HYBRID	Uy, Audrey
	11/7 - 12/5	M	06:30pm-09:20pm	Anaheim Campus - 510	Uy, Audrey
	<i>Required In-Person Dates/Times: Nov 7, Nov 14, Nov 28, and Dec 5 from 6:30pm-9:30pm</i>				
50940	10/17 - 12/16	Remote	Remote	HYBRID	Uy, Audrey
	11/9 - 12/7	W	06:30pm-09:20pm	Anaheim Campus - 510	Uy, Audrey
	<i>Required In-Person Dates/Times: Nov 9, Nov 16, Nov 30, and Dec 7 from 6:30pm-9:30pm</i>				

## Medical Assistant Clinical Procedures Theory II

## MEDA 210

*Prerequisite:* MEDA 200 Medical Assistant Clinical Procedures Theory I. *Co-requisite:* MEDA 211 Medical Assistant Clinical Procedures Lab II. This course reviews the theory behind back office procedures. Students review assisting physicians with minor surgical procedures, pharmacology, laboratory procedures, nutrition, patient education, diagnostic imaging, and urgent care and emergency procedures. **Textbook Required.**

CRN	Dates	Days	Time	Location	Instructor
50922	8/15 - 10/14	Remote	Remote	ONLINE - ONLINE	Uy, Audrey
51110	10/17 - 12/16	Remote	Remote	ONLINE - ONLINE	Uy, Audrey

**For Medical Terminology (MEDO 105),**

Please see page 36.

## Pharmacy Technician

NOCE's Pharmacy Technician Certificate provides the first steps to enter a new career. The program is accredited by the American Society of Health-System Pharmacists (ASHP). Become a certified pharmacy technician and prepare to work in a retail or hospital pharmacy.

### Medical Terminology

(Formerly MEOC 104)

**MEDO 105**

This course introduces students to medical terminology in preparation for careers in the medical field. It covers the study of the basic elements of medical terms and the anatomy and physiology of the human body. It also covers different pathological conditions and procedures for their treatment. **Textbook Required.**

CRN	Dates	Days	Time	Location	Instructor
50886	8/15 - 10/14	Remote	Remote	ONLINE - ONLINE	Smith, Fawn
50887	8/15 - 10/14	Remote	Remote	ONLINE - ONLINE	Tarango, Courtney
50888	10/17 - 12/16	Remote	Remote	ONLINE - ONLINE	Smith, Fawn
50889	10/17 - 12/16	Remote	Remote	ONLINE - ONLINE	Tarango, Courtney

### Pharmacy Technician, Introduction

(Formerly MEOC 130)

**PTEC 100**

Course orients students to pharmacy practice and the work of pharmacy technicians. It covers pharmacy technician registration process and educational requirements, the role of the technician, duties and tasks technicians perform as regulated by pharmacy law, and the necessary abilities and skills for a successful career as a pharmacy technician. **Textbook Required.**

CRN	Dates	Days	Time	Location	Instructor
50884	8/15 - 10/14	Remote	Remote	ONLINE - ONLINE	Dunne, Catherine
50885	10/17 - 12/16	Remote	Remote	ONLINE - ONLINE	Dunne, Catherine

### Pharmacy Operations Lab

(Formerly MEDO 230)

**PTEC 105**

Prerequisite: PTEC 100 Pharmacy Technician, Introduction and COMP 685 Beginning Keyboarding or Keyboarding Challenge Exam with a pass rate of 30 net words a minute. This course is an introduction to the operations of a pharmacy and provides students with a working knowledge of its structural, functional, business and inter-relational aspects within the health care system. The course also covers the basics of compounding, medication distribution and inventory control. **Textbook Required.**

CRN	Dates	Days	Time	Location	Instructor
50896	10/17 - 12/16	Remote	Remote	ONLINE - ONLINE	Shields, Julie

### Pharmaceutical Mathematics

(Formerly MEOC 140)

**PTEC 110**

Prerequisite: PTEC 100 Pharmacy Technician, Introduction. Includes a review of basic mathematics focusing on its application to common pharmaceutical calculations; terminology, abbreviations and units needed to perform pharmaceutical calculations; and how to interpret pharmaceutical documents using acquired pharmaceutical math knowledge. **Textbook Required.**

CRN	Dates	Days	Time	Location	Instructor
50893	8/15 - 10/14	Remote	Remote	ONLINE - ONLINE	Shields, Julie

### Pharmacology I

(Formerly MEOC 121)

**PTEC 115**

Prerequisite: MEDO 105 Medical Terminology. Students will learn the principles of pharmacology. Students will review classifications of medicines, trade and generic names, side effects and drug interactions related to the neurological, visual, auditory, integumentary, and musculoskeletal body systems. Over-the-counter drugs including antihistamines, anti-inflammatory, analgesics, vitamins and natural substances will be covered. **Textbook Required.**

CRN	Dates	Days	Time	Location	Instructor
50890	8/15 - 10/14	Remote	Remote	ONLINE - ONLINE	Shields, Julie

## Pharmacology II

(Formerly MEOC 122)

PTEC 120

Prerequisite: MEDO 105 Medical Terminology. Students will learn the principles of pharmacology. Students will review classifications of medicines, trade and generic names, side effects and drug interactions related to the cardiovascular, blood, respiratory, urinary, digestive, endocrine and reproductive body systems. Anti-infectives, vaccines, oncology agents, as well as fluid and electrolytes are covered. **Textbook Required.**

CRN	Dates	Days	Time	Location	Instructor
50892	10/17 - 12/16	Remote	Remote	ONLINE - ONLINE	Shields, Julie

## Human Relations for Healthcare Workers

(Formerly MEOC 135)

PTEC 125

Covers basic communications skills with emphasis on the healthcare profession. Topics include non-verbal communication, group communication, conflict resolution, ethics in health communication, elements of intercultural communication, resume writing, job application and interviewing techniques. **Textbook Required.**

CRN	Dates	Days	Time	Location	Instructor
50901	8/15 - 10/14	Remote	Remote	ONLINE - ONLINE	Dunne, Catherine
50925	10/17 - 12/16	Remote	Remote	ONLINE - ONLINE	Dunne, Catherine

## Pharmacy Technician, Lab for the In-Patient

(Formerly MEDO 221)

PTEC 200

Prerequisite: PTEC 105 Pharmacy Operations Lab and PTEC 110 Pharmaceutical Mathematics and PTEC 115 Pharmacology I and PTEC 120 Pharmacology II. Course covers the preparation of medications given by intravenous, epidural and subcutaneous routes of administration. The student will learn aseptic techniques, pharmacy IV calculations, drug compatibilities and stabilities, IV therapy management, and specialized equipment. The laboratory incorporates use of laminar and vertical flow hoods and computerized software for IV preparation. **Textbook Required.**

CRN	Dates	Days	Time	Location	Instructor
50947	8/15 - 10/14	Remote	Remote	HYBRID	Shields, Julie
	8/17 - 10/12	W	06:00pm-07:50pm	Anaheim Campus - 408	Shields, Julie
	<i>Required In-Person Dates/Times: Aug 17, Aug 24, Aug 31, Sept 7, Sept 14, Sept 21, Sept 28, Oct 5, and Oct 12 from 6:00pm-8:00pm</i>				
51136	10/17 - 12/16	Remote	Remote	HYBRID	Shields, Julie
	10/19 - 12/14	W	09:00am-10:50am	Anaheim Campus - 408	Shields, Julie
	<i>Required In-Person Meeting Dates/Times: Oct 19, Oct 26, Nov 2, Nov 9, Nov 16, Nov 23, Nov 30, Dec 7, and Dec 14 from 9:00am-11:00am</i>				

## Pharmacy Technician, Lab for the Out-Patient

(Formerly MEDO 220)

PTEC 205

Prerequisite: MEDO 105 Medical Terminology and PTEC 105 Pharmacy Operations Lab and PTEC 110 Pharmaceutical Mathematics and PTEC 115 Pharmacology I and PTEC 120 Pharmacology II. This course is designed to provide pharmacy technician students with practical experience in a simulated out-patient pharmacy setting. It includes hands-on experience working with a computerized pharmacy management system in the retail setting, third party billing and telephone etiquette. **Textbook Required.**

CRN	Dates	Days	Time	Location	Instructor
50897	8/15 - 10/14	Remote	Remote	ONLINE - ONLINE	Dunne, Catherine
51135	10/17 - 12/16	Remote	Remote	ONLINE - ONLINE	Dunne, Catherine

## Pharmacy Technician Certification Exam Review

PTEC 310

This course is a review for the pharmacy technician certification exam. It covers the registration process and re-certification requirements, and reviews the materials contained on the exam. This course is designed as a review for individuals who have completed a pharmacy technician program or who are working pharmacy technicians. **Textbook Required.**

CRN	Dates	Days	Time	Location	Instructor
51130	9/26 - 12/16	Remote	Remote	ONLINE - ONLINE	Shields, Julie

## Pharmacy Technician Practical Career Training - Entry

(Formerly MEDO 316)

**PTEC 300**

Prerequisite: PTEC 125 Human Relations for Healthcare Workers and PTEC 200 Pharmacy Technician, Lab for the In-Patient and PTEC 205 Pharmacy Technician, Lab for the Out-Patient. This course is designed to provide pharmacy technician students with field experience in an out-patient pharmacy environment. It requires weekly class meetings plus 130-hours of externship in an approved pharmacy. Class topics include professionalism, current issues in pharmacy, and work performance. **Textbook Required.**

CRN	Dates	Days	Time	Location	Instructor
51131	8/15 - 10/14	Remote	Remote	ONLINE - ONLINE	Dunne, Catherine

## Pharmacy Technician Advanced Level Lecture

**PTEC 301**

Prerequisite: PTEC 125 Human Relations for Healthcare Workers, and PTEC 200 Pharmacy Technician, Lab for the In-Patient, and PTEC 205 Pharmacy Technician, Lab for the Out-Patient. Corequisite: PTEC 302 Pharmacy Technician Advanced Level Lab. The program prepares students for practice as Advanced-level pharmacy technicians, in a broad range of advanced roles in a variety of contemporary settings (e.g., community, hospital, home care, long-term care) and has students acquire additional knowledge, skills, behaviors, and abilities beyond those of the Entry-level pharmacy technician. **Textbook Required.**

CRN	Dates	Days	Time	Location	Instructor
51646	9/26 - 12/16	Remote	Remote	ONLINE - ONLINE	Yeon, Hwa

## Pharmacy Technician Advanced Level Lab

**PTEC 302**

Prerequisite: PTEC 125 Human Relations for Healthcare Workers and PTEC 200 Pharmacy Technician, Lab for the In-Patient and PTEC 205 Pharmacy Technician, Lab for the Out-Patient or Completion of an American Society of Hospital Pharmacists (ASHP) recognized Pharmacy Technician Entry Level program. Co-requisite: PTEC 301 Pharmacy Technician Advanced Level Lecture. The program prepares students for practice as Advanced-level pharmacy technicians, in a broad range of advanced roles in a variety of contemporary settings (e.g., community, hospital, home care, long-term care) and has students acquire additional knowledge, skills, behaviors, and abilities beyond those of the Entry-level pharmacy technician. The Lab is designed to be taken concurrently or after the lecture course. **Textbook Required.**

CRN	Dates	Days	Time	Location	Instructor
51647	9/26 - 12/13	T	06:00pm-08:50pm	Anaheim Campus - 408	Yeon, Hwa

*Required In-Person Dates/Times: Sept 27, Oct 4, Oct 11, Oct 18, Oct 25, Nov 1, Nov 8, Nov 15, Nov 22, Nov 29, Dec 6, and Dec 13 from 6:00pm-9:00pm*

## Quality Assurance Management for Medical Devices

The Quality Assurance Management for Medical Devices Program prepares students for an entry-level job within the medical device industry. This program provides detailed training on the standards and regulations of medical devices. If you are detailed-oriented, love to read and write, and are good at problem solving, this career path is for you!

## Document and Database Management for

### Medical Devices

**QAMD 410**

An overview of regulatory requirements for document control and database management for the medical device field. Covers the fundamentals of writing documents that meet regulatory compliance. Equips students for handling document management systems efficiently.

CRN	Dates	Days	Time	Location	Instructor
51139	8/17 - 10/12	W	05:30pm-09:20pm	Anaheim Campus - 610	Vu, David

## Technical Writing for Bio-Medical Industries

**QAMD 420**

This course will provide students with an overview and understanding of technical writing for the bio medical industry. The course will cover principle writing methodologies for quality assurance, engineering, manufacturing, and production of a medical device product. Topics will address documentation as related to FDA mandated requirements, ISO standards and for writing GMP procedures.

CRN	Dates	Days	Time	Location	Instructor
51141	10/19 - 12/14	W	05:30pm-09:20pm	Anaheim Campus - 610	Vu, David



# DISABILITY SUPPORT SERVICES

Increase independence and self-advocacy.

Prepare for and obtain competitive employment.

Get support with emotional health and relationship skills.

Access disability resources for college courses.

Explore [noce.edu/dss](https://noce.edu/dss).



**Need Translated Instructions?**

**¿Necesita instrucciones traducidas?**

Haga clic en “Traducir” en la esquina superior derecha de la página. Seleccione su idioma para traducir el sitio. O llame al 714.808.4679 para obtener más ayuda.

# Program Overview

## Disability Support Services

The Disability Support Services (DSS) Program provides support to adults with disabilities so they can successfully complete their postsecondary education, job, and independent living goals at NOCE.

### Academics Relationships Independence Self-advocacy Emotional-health (ARISE)

ARISE is a neurodiversity and wellness lab designed to bolster student persistence by supporting students with organization, time management, self-monitoring, critical thinking, and social skills that lead to academic and vocational success. The lab is a safe space where students can relax quietly, or access faculty and staff for help managing daily stressors. Visit [noce.edu/arise](https://noce.edu/arise).

### College to Career (C2C)

C2C provides support services to help students with intellectual disabilities succeed in noncredit and credit classes leading to an inclusive college experience. Visit [noce.edu/college2career](https://noce.edu/college2career).

### Independent Vocational and Educational Supports (IVES)

IVES and Equity Coaching provides educational coaching to support students enrolled in inclusive noncredit and credit courses at NOCE, Cypress College, and Fullerton College. Visit [noce.edu/ives](https://noce.edu/ives).

### Mobility Training

Students learn the skills needed to independently use the public transportation system. Visit [noce.edu/mobility](https://noce.edu/mobility).

### Work Independence Self Advocacy Education (WISE)

Students learn to live more independently, build employment skills, and navigate their community. WISE is open to adults with disabilities who are served by Regional Center and who require a higher level of instructional support than the NOCE DSS classes. With a 1:4 staff-to-student ratio, students get personalized attention and earn certificates for completing the program. Visit [noce.edu/wise](https://noce.edu/wise).

### Workability III

Workability III, a collaboration between NOCE and the Department of Rehabilitation, helps students with disabilities overcome barriers to employment. Job and employment specialists meet with students to determine individual skills, job aptitude, and work readiness. Visit [noce.edu/workability](https://noce.edu/workability).



## Ready to Get Started?

### Once you've applied to NOCE...

1. Meet with a DSS counselor to complete on-boarding and registration: **714.484.7057** or [disabilitysupport@noce.edu](mailto:disabilitysupport@noce.edu).
2. Attend class
  - Online by logging into Canvas on the start date listed in the class schedule.
  - In person on the date, time, and at the location listed in the class schedule. ★

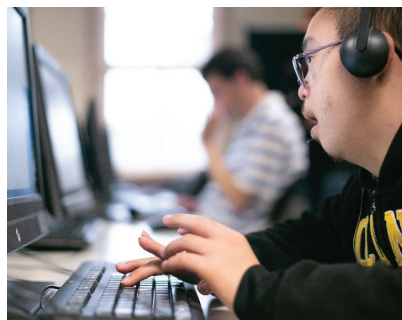


## Have Questions?

### Need Registration Help?

714.484.7057 or [disabilitysupport@noce.edu](mailto:disabilitysupport@noce.edu)

★ TIP: Make arrangements for support four weeks prior to the start of class. For information about what to bring to the appointment with the DSS counselor, visit [noce.edu/dss/registration](https://noce.edu/dss/registration).



## Info Sessions

Want to learn more about the DSS programs including Workability or College to Career? Join us for an information session via Zoom: [noce.edu/info-sessions](https://noce.edu/info-sessions).



## ★ NOTE

Students taking in-person classes must adhere to the NOCCCD COVID-19 vaccine mandate or request an exemption. More information at [noce.edu/vaccine](https://noce.edu/vaccine).

## Academic Track

### Reading: Survival Vocabulary & Basic Reading and Writing

**DSSS 116**

This course is designed for students interested in improving their basic reading and writing skills, as well as increasing reading comprehension abilities. Topics include survival vocabulary, introduction to use of reference tools and time management.

CRN	Dates	Days	Time	Location	Instructor
51386	8/15 - 12/16	Remote	Remote	ONLINE - ONLINE	Prell, Megan
	<i>Optional: Online class meetings - Mondays &amp; Wednesdays from 10:00a - 11:00a (08/15/22 - 12/16/22)</i> <i>Zoom link provided by instructor.</i>				
51399	8/15 - 12/16	Remote	Remote	ONLINE - ONLINE	Ferrier, Allison
	<i>Optional: Online class meetings - Tuesdays &amp; Thursdays from 9:00a - 10:00a (08/15/22 - 12/16/22)</i> <i>Zoom link provided by instructor.</i>				
51425	8/15 - 12/16	Remote	Remote	ONLINE - ONLINE	Sorooshian-Tafti, Rose
	<i>Optional: Online class meetings - Tuesdays &amp; Thursdays from 12:30p - 1:30p (08/15/22 - 12/16/22)</i> <i>Zoom link provided by instructor.</i>				

### Money Skills: Safe Shopping and Money Management

**DSSS 132**

A course designed for students wanting to gain fundamental skills of safe shopping and money management basics. Students will learn to identify and avoid scams online and in the community.

CRN	Dates	Days	Time	Location	Instructor
51389	8/15 - 12/16	Remote	Remote	ONLINE - ONLINE	Sorooshian-Tafti, Rose
	<i>Optional: Online class meetings - Mondays and Wednesdays from 10:00 - 11:00a (08/15/22 - 12/16/22)</i> <i>Zoom link provided by instructor.</i>				
51406	8/15 - 12/16	Remote	Remote	ONLINE - ONLINE	Sorooshian-Tafti, Rose
	<i>Optional: Online class meetings - Mondays &amp; Wednesdays from 1:00 - 2:00p (08/15/2022 - 12/16/22)</i> <i>Zoom link provided by instructor.</i>				

## Community Track

### Community Resources

**DSSS 110**

This course is designed to provide students with the skills necessary to access resources in the community that may provide opportunities for employment, personal wellness, and organizations that provide community transition assistance. Topics include instructions for use of public transportation to get to and return from community destinations

CRN	Dates	Days	Time	Location	Instructor
51422	8/15 - 12/16	Remote	Remote	ONLINE - ONLINE	Stanojkovic, Alli
	<i>Optional: Online class meetings (08/15/22 - 12/16/22) Mondays, from 2:00p - 3:00p Fridays, from 9:00a - 10:00a</i> <i>Zoom link provided by instructor.</i>				
51404	8/17 - 12/14	W	09:00am-02:50pm	Tech Ed II - CC - 223	Cunningham, Julia

## Computer Track

### Computer Fundamentals: Beginning Skills

**DSSS 120**

This course is designed for students interested in an introduction to basic computer and word processing skills.

CRN	Dates	Days	Time	Location	Instructor
51411	8/15 - 12/14	M W	12:30pm-02:50pm	Tech Ed II - CC - 200	Van Gelder, Matthew

## Computers: Word Processing and Electronic Mail

DSSS 123

Designed for students interested in increasing their basic knowledge of word processing and training in the use of the Internet and operation of e-mail accounts.

CRN	Dates	Days	Time	Location	Instructor
51394	8/16 - 12/15	T Th	12:30pm-02:50pm	Anaheim Campus - 308	Prell, Megan
51403	8/16 - 12/15	T Th	09:00am-11:20am	Tech Ed II - CC - 200	Van Gelder, Matthew
51427	8/16 - 12/15	T Th	12:30pm-02:50pm	Wilshire NOCE 200 BLDG - 201	Stanojkovic, Alli

## Photoshop Elements: Digital Camera Operation & Editing Fundamentals

DSSS 124

This course is designed for individuals wanting to increase their basic knowledge of taking a digital photo and introduce photo editing software basics. Topics will include operating a camera or related device, the parts of a camera, photo editing software options and basic skills in editing to print.

CRN	Dates	Days	Time	Location	Instructor
51397	8/15 - 12/16	Remote	Remote	ONLINE - ONLINE	Van Gelder, Matthew

*Optional: Online class meetings - Fridays from 9:00 - 11:00a (08/15/22 - 12/16/22) Zoom link provided by instructor.*

## Core Skills Track

### Self Advocacy: Making a Plan

DSSS 150

This course provides students with the knowledge and resources to make decisions and communicate needs for determining life and vocational paths. Students will examine personal strengths and skills to successfully advocate for life or vocational goals, in addition exploration into areas of disability and adaptive skills to mitigate personal challenges.

CRN	Dates	Days	Time	Location	Instructor
51418	8/15 - 12/14	M W	09:00am-11:20am	Wilshire NOCE 200 BLDG - 201	Williams, Courtney
51387	8/15 - 12/16	Remote	Remote	ONLINE - ONLINE	Prell, Megan

*Optional: Online class meetings - Tuesdays & Thursdays from 10:00 - 11:00a (08/15/22 - 12/16/22)  
Zoom link provided by instructor.*

51408	8/15 - 12/16	Remote	Remote	ONLINE - ONLINE	Torrez, Jaymi
-------	--------------	--------	--------	-----------------	---------------

*Optional: Online class meetings - Tuesdays & Thursdays from 1:00 - 2:00p (08/15/22 - 12/16/22)  
Zoom link provided by instructor.*

### Social Skills: Foundational Interpersonal Basics

DSSS 152

This course is designed to provide students with an overview of foundational social skills at home, school, work, and in the community, as well as their personal life using a variety of basic skills.

CRN	Dates	Days	Time	Location	Instructor
51400	8/15 - 12/14	M W	09:00am-11:20am	NOCE Cypress BLDG 18 - 107	Pietrzak, Edyta
51391	8/16 - 12/15	T Th	09:00am-11:20am	Anaheim Campus - 610	Cunningham, Julia

## Employment Skills Track

### Job Skills: Exploring Occupational Paths

DSSS 140

This course is intended to assist students in establishing a realistic occupational goal and explore resources for seeking employment in a chosen occupation. This course will also introduce students to effective job interview preparation, technique and attire

CRN	Dates	Days	Time	Location	Instructor
51413	8/16 - 12/15	T Th	12:30pm-02:50pm	Tech Ed II - CC - 200	Van Gelder, Matthew
51424	8/15 - 12/16	Remote	Remote	ONLINE - ONLINE	Stanojkovic, Alli

*Optional: Online class meetings - Mondays & Wednesdays from 1:00p - 2:00p (08/15/16 - 12/16/22)  
Zoom link provided by instructor.*

## Communication on the Job: Foundational Skills

DSSS 142

A class designed for students interested in learning how to expand their communication skills in relation to employment. Course will focus on professional communication while seeking employment as well as once employment is obtained; and will include activities to enhance written and verbal skills.

CRN	Dates	Days	Time	Location	Instructor
51390	8/15 - 12/14	M W	09:00am-11:20am	Anaheim Campus - 312	Torrez, Jaymi
51469	8/15 - 12/16	Remote	Remote	ONLINE - ONLINE	Calsita, Ciara

*Online class meetings - Tuesdays & Thursdays from 12:00 1:00p Zoom link provided by instructor.*

## Educational Support and Employment Prep Lab

DSSS 370

This course is designed to provide students with the basic knowledge to develop educational and vocational skills. Students will increase awareness of campus and community supports, build self-advocacy skills, as well as exercise communication and mobility skills.

CRN	Dates	Days	Time	Location	Instructor
51613	8/15 - 12/15	Remote	Remote	ONLINE - ONLINE	Calsita, Ciara
	8/18 - 12/15	Th	09:00am-11:20am	Anaheim Campus - 313	Calsita, Ciara

## Interpersonal Skills Track

### Relationships: Foundational Basics in Building

#### Healthy Relationships

DSSS 160

This course is designed to provide students an overview of appropriate interactions with foundational relationships concepts. Topics include appropriate interactions for building and maintaining healthy friendships and romantic relationships, using a variety of basic skills.

CRN	Dates	Days	Time	Location	Instructor
51426	8/15 - 12/14	M W	12:30pm-02:50pm	Wilshire NOCE 200 BLDG - 201	Williams, Courtney

### Boundaries & Relationships: Fundamentals

DSSS 162

This course is designed to provide students with the knowledge and skills they need to have safe and healthy interpersonal relationships. Topics covered include personal boundaries, dealing with strangers, and appropriate types of relationships.

CRN	Dates	Days	Time	Location	Instructor
51393	8/15 - 12/14	M W	12:30pm-02:50pm	Anaheim Campus - 308	Prell, Megan
51398	8/15 - 12/16	Remote	Remote	ONLINE - ONLINE	Ferrier, Allison

*Optional: Online class meetings - Mondays from 9:00 - 11:00a (08/15/22 - 12/16/22) Zoom link provided by instructor.*

## Life Skills Track

### Banking & Bill Paying: Beginning Skills

DSSS 130

A quick-paced course designed to provide students with foundational banking and money management skills. Topics include basic banking terminology, budgeting and computing purchases.

CRN	Dates	Days	Time	Location	Instructor
51396	8/15 - 12/16	Remote	Remote	ONLINE - ONLINE	Van Gelder, Matthew

*Optional: Online class meetings - Mondays & Wednesdays from 9:00 - 11:00a (08/15/22 - 12/16/22) Zoom link provided by instructor.*

51421	8/15 - 12/16	Remote	Remote	ONLINE - ONLINE	Breen, Theresa
-------	--------------	--------	--------	-----------------	----------------

*Optional: Online class meetings - Tuesdays & Thursdays from 10:15 - 11:15a (08/15/22 - 12/16/22) Zoom link provided by instructor*

51392	8/15 - 12/16	Remote	Remote	ONLINE - ONLINE	Torrez, Jaymi
-------	--------------	--------	--------	-----------------	---------------

*Optional: Online class meetings - Mondays & Wednesdays from 1:00 - 2:00p (08/15/22 - 12/16/22) Zoom link provided by instructor.*

## Basic Cooking: Beginning Skills

DSSS 134

This course is designed to give students a foundation of basic cooking and food preparation concepts and activities, kitchen cleanliness and safety, and grocery shopping skills, using a variety of basic skills.

CRN	Dates	Days	Time	Location	Instructor
51401	8/19 - 12/16	F	09:00am-02:50pm	NOCE Cypress BLDG 18 - 107	Prell, Megan
51416	8/15 - 12/16	Remote	Remote	ONLINE - ONLINE	Stanojkovic, Alli

*Optional: Online class meetings - Mondays & Wednesdays from 10:00 - 11:00a (08/15/22 - 12/16/22)  
Zoom link provided by instructor.*

## Independent Living: Options & Resources

DSSS 137

This course is an overview of living options for those considering living independent of their family homes. Topics will include the advantages and disadvantages of various living options as well as exploring the process of choosing and renting an apartment.

CRN	Dates	Days	Time	Location	Instructor
51395	8/16 - 12/15	T Th	12:30pm-02:50pm	Anaheim Campus - 610	Cunningham, Julia
51409	8/15 - 12/14	M W	12:30pm-02:50pm	NOCE Cypress BLDG 18 - 107	Calsita, Ciara
51423	8/16 - 12/15	T Th	09:00am-11:20am	Wilshire NOCE 200 BLDG - 201	Stanojkovic, Alli

## WISE Program

### WISE - US Civics

DSSS 308

This class is designed for adults with developmental and learning disabilities who want to become better citizens by gaining knowledge about the civics of the United States of America as well as American national monuments, American heroes and national patriotic symbols.

CRN	Dates	Days	Time	Location	Instructor
51581	8/15 - 12/16	MTWThF	09:00am-02:20pm	NOCE Cypress Main Office - 103	Brown, Julie Pietrzak, Edyta
51582	8/15 - 12/16	MTWThF	09:00am-02:20am	Wilshire NOCE 200 BLDG - 207	Reeves, Megan Breen, Theresa

## DSS Off-Site Locations

CRN	Location
51428	My Day Counts
51429	My Day Counts
51459	My Day Counts
51579	West Anaheim TRC



# ENGLISH AS A SECOND LANGUAGE AND CITIZENSHIP

Practice listening, speaking, reading, and writing skills.

Learn English and job skills at the same time.

Prepare for the U.S. Citizenship Test.

Develop academic skills for success in college.

Explore [noce.edu/esl](https://noce.edu/esl)

714.808.4638 \* [ESL4ALL@noce.edu](mailto:ESL4ALL@noce.edu)



## Need Translated Instructions?

### ¿Necesita instrucciones traducidas?

Haga clic en "Traducir" en la esquina superior derecha de la página. Seleccione su idioma para traducir el sitio. O llame al [714.808.4638](tel:714.808.4638) para obtener más ayuda.

# Program Overview

## ESL Courses

The ESL Program offers six levels of English – from Literacy to Advanced - with instruction in listening, speaking, reading, writing, and grammar. Specialty courses offer additional practice. Visit [noce.edu/esl](https://noce.edu/esl).

## ESL Learning Center

ESL Learning Centers have instructors and staff available to help students with homework, resources, technology, and more. In-person at Anaheim Campus, Cypress Center, and Wilshire Center, and online in Zoom: [noce.edu/ESL/LC](https://noce.edu/ESL/LC).

## Pathway to Citizenship

Citizenship classes prepare students to take the USCIS Citizenship Test. Students examine required forms and prepare for their USCIS Citizenship Interview by practicing the USCIS Civics Questions, conversation strategies, and dictation. Classes available for Beginning and Intermediate/Advanced students. More info at [noce.edu/citizenship](https://noce.edu/citizenship).

## Career Pathways for English Language Learners (ELLs)

In partnership with our Career Technical Education (CTE) Program, NOCE offers career pathway programs for ESL students. Two instructors work with students to learn career-specific language and job skills to prepare them for rewarding entry-level positions. For more information or to register, contact the ESL Program at [714.808.4638](tel:714.808.4638) or [ESL4ALL@noce.edu](mailto:ESL4ALL@noce.edu).

## Get Ready for College

Academic Success classes and certificates are available for Intermediate-Advanced ESL Program students with a goal of transferring to college or university. More info at [noce.edu/esl-academic](https://noce.edu/esl-academic).

## Ready to Get Started?

### Once you've applied to NOCE...

1. Complete NOCE ESL Orientation through myGateway at [noce.edu/mygateway](https://noce.edu/mygateway). Visit [noce.edu/orientation](https://noce.edu/orientation) for details.
2. Call or email the ESL Program to schedule a placement test and registration at [714.808.4638](tel:714.808.4638) or [ESL4ALL@noce.edu](mailto:ESL4ALL@noce.edu).
3. Attend class in-person or online through Canvas at [noce.edu/canvas](https://noce.edu/canvas).

## Have Questions?

### Need Registration Help?

### ¿Necesita ayuda con el registro?

[714.808.4638](tel:714.808.4638) or [ESL4ALL@noce.edu](mailto:ESL4ALL@noce.edu)

# ESL Program Certificates

The ESL Program offers certificates of completion that students can earn when they pass all courses listed. The state-approved certificates awarded appear on official student transcripts. For more information on certificate class listings, please visit [noce.edu/esl/certificates](https://noce.edu/esl/certificates).

## Core Certificates

- ESL Intergrated Skills, Beginning Literacy
- ESL Intergrated Skills, Beginning Low
- ESL Intergrated Skills, Beginning High
- ESL Intergrated Skills, Intermediate Low
- ESL Intergrated Skills, Intermediate High
- ESL Intergrated Skills, Advanced

## Specialty Certificates

- ESL for Community Involvement, Beginning
- ESL for Community Involvement, Intermediate/Advanced
- ESL Grammar Review
- ESL Reading & Writing Skills, Beginning
- ESL Reading & Writing Skills, Intermediate/Advanced
- ESL Speaking Skills, Beginning
- ESL Speaking Skills, Intermediate/Advanced
- ESL Specialty Courses
- ESL Vocabulary Review

## College and Career Pathway Certificates

- ESL for Academic Success I
- ESL for Academic Success II
- ESL for Workforce Preparation, Basic
- ESL for Workforce Preparation, Advanced

## Info Sessions

Want to learn more about the various ESL and citizenship prep classes including how to earn certificates, schedule of classes, and steps to register? Join us for an information session via Zoom: [noce.edu/info-sessions](https://noce.edu/info-sessions).

### ★ NOTE

Students taking in-person classes must adhere to the NOCCCD COVID-19 vaccine mandate or request an exemption. More information at [noce.edu/vaccine](https://noce.edu/vaccine).



## ESL Learning Center

Need extra practice with English? Want help participating in your online class?

At the ESL Learning Center, students can:

- Get help with technology
- Learn at your own pace, guided by experienced and professional teachers
- Focus on conversation, grammar, reading, or writing skills
- Explore American idioms and culture
- Use technology resources to learn and practice English

ESL Learning Center schedule: [NOCE.EDU/ESL/LC](https://noce.edu/ESL/LC) | Questions: 714.808.4638 or [ESL4ALL@noce.edu](mailto:ESL4ALL@noce.edu)

## ESL Learning Center

## ESLA 001

The ESL Learning Center offers an opportunity to practice English through various instructional media. Students learn through ESL software and/or receive individual and group tutoring to improve their speaking, listening, reading and writing skills. Special interest areas such as Vocational ESL and EL Civics are also part of the instruction.

CRN	Dates	Days	Time	Location
<b>In-Person Classes</b>				
51572	8/15 - 12/15	MTWTh	12:00pm-06:00pm	Anaheim Campus - 121
51405	8/15 - 12/15	MTWTh	12:00pm-06:00pm	Cypress Tech Ed 2 - 203
51410	8/15 - 12/15	MTWTh	12:00pm-06:00pm	Wilshire NOCE 200 BLDG - 219

### Online Classes

51571	8/15 - 12/15	MTWTh	12:00pm-09:00pm	Online Zoom
	8/19 - 12/16	F	08:00am-09:00pm	Online Zoom

Schedule subject to change. Check website for current schedule and Zoom links: [NOCE.EDU/ESL/LC](https://noce.edu/ESL/LC)  
Call 714-808-4638 or email [ESL4ALL@noce.edu](mailto:ESL4ALL@noce.edu) for more information.

## ESL Core Classes

### ESL Integrated Skills, Beginning Literacy

### ESLA 229

This course is designed for adult language learners who possess limited to no proficiency in English. Students also may not possess literacy skills in their first language. The class will focus on basic vocabulary in English along with basic writing conventions and pronunciation. Students will start to build competency in all four language skills: reading, writing, listening and speaking. Course topics relate to everyday needs and include information related to community resources, the workplace and lifelong learning opportunities. English language and civics topics are chosen each semester based on student needs.

CRN	Dates	Days	Time	Location	Instructor
<b>In-Person Classes</b>					
51430	8/15 - 12/15	MTWTh	08:30am-11:50am	Anaheim Campus - 106	Takeda, Nancy
51438	8/15 - 12/15	MTWTh	06:00pm-09:20pm	Anaheim Campus - 106	Witt, Sharon
<b>Online Classes</b>					
51512	8/15 - 12/17	Remote	Remote	ZOOM - ZOOM	Pico, Karina
<i>Class is 14 hrs/wk. Live online class meetings MTWTh 8:30-11:00a (8/15-12/17/22). Zoom link from teacher.</i>					
51513	8/15 - 12/17	MTWTh	Remote	ZOOM - ZOOM	Choi, Jean
<i>Class is 14 hrs/wk. Live online class meetings MTWTh 8:30-11:00a (8/15-12/17/2022). Zoom link from teacher.</i>					
51514	8/15 - 12/17	MTWTh	Remote	ZOOM - ZOOM	Lee, Julie
<i>Class is 14 hrs/wk. Live online class meetings MTWTh 6:30-9:00p (8/15-12/17/22). Zoom link from teacher.</i>					

## ESL Integrated Skills, Beginning Low

## ESLA 230

This course focuses on developing basic-level listening, speaking, reading and writing skills. Students will acquire basic language forms and functions to help them access community resources, prepare for the workplace and introduce them to lifelong learning opportunities.

CRN	Dates	Days	Time	Location	Instructor
<b>In-Person Classes</b>					
51431	8/15 - 12/15	MTWTh	08:30am-11:50am	Anaheim Campus - 104	Glicker, Eric
51440	8/15 - 12/15	MTWTh	06:00pm-09:20pm	Anaheim Campus - 104	Robinson, Christopher
51454	8/15 - 12/15	MTWTh	08:30am-11:50am	Cypress Tech Ed 2 - 217	Koh, Myung
51460	8/15 - 12/15	MTWTh	08:30am-11:50am	Wilshire NOCE 200 BLDG - 217	Kepler, Marc
<b>Online Classes</b>					
51516	8/15 - 12/17	Remote	Remote	ZOOM - ZOOM	Howie, Sherri
<i>Class is 14 hrs/wk. Live online class meetings MTWTh 9:00-11:15a (8/15-12/17/22). Zoom link from teacher.</i>					
51517	8/15 - 12/17	Remote	Remote	ZOOM - ZOOM	Billiter, Laura
<i>Class is 14 hrs/wk. Live online class meetings MTWTh 9:00-11:15a (8/15-12/17/22). Zoom link from teacher.</i>					
51518	8/15 - 12/17	Remote	Remote	ZOOM - ZOOM	Stasiuk, Pedro
<i>Class is 14 hrs/wk. Live online class meetings MTWTh 6:30-8:45p (8/15-12/17/22). Zoom link from teacher.</i>					

## ESL Integrated Skills, Beginning High

## ESLA 231

This course focuses on developing beginning-level listening, speaking, reading and writing skills. It also involves competency-based learning to help students access community resources, prepare them for the workplace and introduce them to lifelong learning opportunities.

CRN	Dates	Days	Time	Location	Instructor
<b>In-Person Classes</b>					
51432	8/15 - 12/15	MTWTh	08:30am-11:50am	Anaheim Campus - 110	Arellano, Peggy
51442	8/15 - 12/15	MTWTh	06:00pm-09:20pm	Anaheim Campus - 110	Lim, Emmie
51443	8/15 - 12/15	MTWTh	06:00pm-09:20pm	Anaheim Campus - 124	Arias, Ana
51455	8/15 - 12/15	MTWTh	08:30am-11:50am	Cypress Tech Ed 2 - 221	Smith, Marlo
51461	8/15 - 12/15	MTWTh	08:30am-11:50am	Wilshire NOCE 200 BLDG - 218	Lorge, Mary
<b>Online Classes</b>					
51520	8/15 - 12/17	Remote	Remote	ZOOM - ZOOM	Kim, Caroline
<i>Class is 12 hrs/wk. Live online class meetings MTWTh 9:00-10:30a (8/15-12/17/22). Zoom link from teacher.</i>					
51521	8/15 - 12/17	Remote	Remote	ZOOM - ZOOM	Hasan, Fouton
<i>Class is 14 hrs/wk. Live online class meetings MTWTh 9:00-11:00a (8/15-12/17/22). Zoom link from teacher.</i>					
51522	8/15 - 12/17	Remote	Remote	ZOOM - ZOOM	Moore, Catherine
<i>Class is 14 hrs/wk. Live online class meetings MTWTh 9:00-11:00a (8/15-12/17/22). Zoom link from teacher.</i>					
51523	8/15 - 12/17	Remote	Remote	ZOOM - ZOOM	Espinoza, Maria
<i>Class is 12 hrs/wk. Live online class meetings MTWTh 8:30-10:30a (8/15-12/17/22). Zoom link from teacher.</i>					
51524	8/15 - 12/17	Remote	Remote	ZOOM - ZOOM	Lewis, Waymon
<i>Class is 14 hrs/wk. Live online class meetings MTWTh 6:30-8:30p (8/15-12/17/22). Zoom link from teacher.</i>					
51525	8/15 - 12/17	Remote	Remote	ZOOM - ZOOM	Pabla, Hardeep
<i>Class is 14 hrs/wk. Live online class meetings MTWTh 6:30-8:30p (8/15-12/17/22). Zoom link from teacher.</i>					

## ESL Integrated Skills, Intermediate Low

## ESLA 232

This course focuses on developing intermediate-level listening, speaking, reading and writing language skills. It also involves competency-based learning to help students access community resources, prepare them for the workplace and introduce them to lifelong learning opportunities.

CRN	Dates	Days	Time	Location	Instructor
<b>In-Person Classes</b>					
51445	8/15 - 12/15	MTWTh	06:00pm-08:50pm	Anaheim Campus - 121	Sersea, Ioan
51433	8/15 - 12/15	MTWTh	08:30am-11:50am	Anaheim Campus - 130	Pyo, Henry
51444	8/15 - 12/15	MTWTh	06:00pm-09:20pm	Anaheim Campus - 130	McFarland, Garrett
51402	8/15 - 12/15	MTWTh	08:30am-11:50am	Cypress Tech Ed 2 - 219	Niyondagara, Alice
51462	8/15 - 12/15	MTWTh	08:30am-11:50am	Wilshire NOCE 200 BLDG - 203	Sanchez, Patricia
<b>Online Classes</b>					
51527	8/15 - 12/17	Remote	Remote	ZOOM - ZOOM	Azarcon, Cynthia
<i>Class is 14 hrs/wk. Live online class meetings MTWTh 9:00-10:45a (8/15-12/17/22). Zoom link from teacher.</i>					
51528	8/15 - 12/17	Remote	Remote	ZOOM - ZOOM	Staff
<i>Class is 12 hrs/wk. Live online class meetings MTWTh 8:30a-10:15a (8/15-12/17/22). Zoom link from teacher.</i>					
51529	8/15 - 12/17	Remote	Remote	ZOOM - ZOOM	Jimenez, Alvin
<i>Class is 14 hrs/wk. Live online class meetings MTWTh 9:00-10:45a (8/15-12/17/22). Zoom link from teacher.</i>					
51530	8/15 - 12/17	Remote	Remote	ZOOM - ZOOM	Khssassi, Zineb
<i>Class is 12 hrs/wk. Live online class meetings MTWTh 7:00-8:30p (8/15-12/17/22). Zoom link from teacher.</i>					
51531	8/15 - 12/17	Remote	Remote	ZOOM - ZOOM	Murillo, Sandra
<i>Class is 14 hrs/wk. Live online class meetings MTWTh 6:30-8:15p (8/15-12/17/22). Zoom link from teacher.</i>					
51532	8/15 - 12/17	Remote	Remote	ZOOM - ZOOM	Peterson, Lucas
<i>Class is 14 hrs/wk. Live online class meetings MTWTh 6:30-8:15p (8/15-12/17/22). Zoom link from teacher.</i>					
51414	8/15 - 12/17	Remote	Remote	ZOOM - ZOOM	Diaz, Carlos
<i>Class is 14 hrs/wk. Live online class meeting M 8:00-10:00a (8/15-12/17/22). Zoom link from teacher.</i>					

## ESL Integrated Skills, Intermediate High

## ESLA 233

This is a four-skill language course using topics and information sources related to student need. Students will build English fluency in reading, writing, listening and speaking by acquiring new vocabulary and applying learned grammatical structures. In this course, students will apply learned language skills to accessing community resources and being an active community participant. Language acquisition and practice is focused on helping students navigate the many ins and outs of their communities. Civics topics will be chosen each term based on the needs of the students.

CRN	Dates	Days	Time	Location	Instructor
<b>In-Person Classes</b>					
51407	8/15 - 12/15	MTWTh	08:30am-11:50am	Wilshire NOCE 200 BLDG - 219	Lynch, Candace
51434	8/15 - 12/15	MTWTh	08:30am-11:50am	Anaheim Campus - 128	Rezai, Maryam
51446	8/15 - 12/15	MTWTh	06:00pm-09:20pm	Anaheim Campus - 117	Staff
51467	8/15 - 12/15	MTWTh	08:30am-11:50am	Cypress Tech Ed 2 - 203	Sahakian, Souzan
<b>Online Classes</b>					
51533	8/15 - 12/17	Remote	Remote	ZOOM - ZOOM	Carson, Gerald
<i>Class is 14 hrs/wk. Live online class meetings MTWTh 8:30-10:15a (8/15-12/17/22). Zoom link from teacher.</i>					
51534	8/15 - 12/17	Remote	Remote	ZOOM - ZOOM	Kahlon, Harinder
<i>Class is 14 hrs/wk. Live online class meetings MTWTh 8:30-10:15a (8/15-12/17/22). Zoom link from teacher.</i>					
51535	8/15 - 12/17	Remote	Remote	ZOOM - ZOOM	Kopydowska, Grazyna
<i>Class is 14 hrs/wk. Live online class meetings MTWTh 8:30-10:15a (8/15-12/17/22). Zoom link from teacher.</i>					
51536	8/15 - 12/17	Remote	Remote	ZOOM - ZOOM	Myers, Victoria
<i>Class is 14 hrs/wk. Live online class meetings MTWTh 8:30-10:15a (8/15-12/17/22). Zoom link from teacher.</i>					
51537	8/15 - 12/17	Remote	Remote	ZOOM - ZOOM	Croteau, Ronald
<i>Class is 14 hrs/wk. Live online class meetings MTWTh 6:30-8:15p (8/15-12/17/22). Zoom link from teacher.</i>					
51538	8/15 - 12/17	Remote	Remote	ZOOM - ZOOM	Gray, Richard
<i>Class is 14 hrs/wk. Live online class meetings MTWTh 6:30-8:15p (8/15-12/17/22). Zoom link from teacher.</i>					
51539	8/15 - 12/17	Remote	Remote	ZOOM - ZOOM	Lee, Eugene
<i>Class is 14 hrs/wk. Live online class meetings MTWTh 6:30-8:15p (8/15-12/17/22). Zoom link from teacher.</i>					

## ESL Integrated Skills, Advanced

## ESLA 234

This is a four-skill language course using topics and information sources related to students' lives, experiences and goals. Students will expand English fluency in reading, writing, listening and speaking by acquiring new vocabulary and applying learned grammatical structures. In this course, students will apply learned language skills to accessing community resources and being an active community participant. Language acquisition and practice is focused on helping students feel competent and capable in their communities. Civics topics will be chosen each term based on the needs of the students.

CRN	Dates	Days	Time	Location	Instructor
<b>In-Person Classes</b>					
51435	8/15 - 12/15	MTWTh	08:30am-11:50am	Anaheim Campus - 410	Cruz, Cassandra
51447	8/15 - 12/15	MTWTh	06:00pm-09:20pm	Anaheim Campus - 410	Kinder, Tina
51464	8/15 - 12/15	MTWTh	08:30am-11:50am	Wilshire NOCE 200 BLDG - 215	Wasby, Roger
<b>Online Classes</b>					
51540	8/15 - 12/17	Remote	Remote	ZOOM - ZOOM	Filloy, Eileen
<i>Class is 14 hrs/wk. Live online class meetings MTWTh 9:00-10:30a (8/15-12/17/22). Zoom link from teacher.</i>					
51541	8/15 - 12/17	Remote	Remote	ZOOM - ZOOM	Nguyen, Sophie
<i>Class is 14 hrs/wk. Live online class meetings MTWTh 9:00-10:30a (8/15-12/17/22). Zoom link from teacher.</i>					
51542	8/15 - 12/17	Remote	Remote	ZOOM - ZOOM	Kunimoto, Trisha
<i>Class is 14 hrs/wk. Live online class meetings MTWTh 6:30-8:00p (8/15-12/17/22). Zoom link from teacher.</i>					
51543	8/15 - 12/17	Remote	Remote	ZOOM - ZOOM	Santostefano, Michela
<i>Class is 14 hrs/wk. Live online class meetings MTWTh 6:30-8:00p (8/15-12/17/22). Zoom link from teacher.</i>					
51544	8/15 - 12/17	Remote	Remote	ZOOM - ZOOM	Usary, Danny
<i>Class is 14 hrs/wk. Live online class meetings MTWTh 6:30-8:00p (8/15-12/17/22). Zoom link from teacher.</i>					

## ESL for Community Involvement, Beginning

## ESLA 260

This course covers beginning level English to adult learners. The focus is on instruction that addresses the students' personal, family and community-based goals appropriate to their emerging language abilities. It develops beginning level listening, speaking, reading, and writing skills to prepare students to function successfully in the community.

CRN	Dates	Days	Time	Location	Instructor
51457	8/15 - 12/15	MTWTh	06:00pm-08:20pm	Cypress Tech Ed 2 - 221	Staff
51465	8/15 - 12/15	MTWTh	06:00pm-08:50pm	Wilshire NOCE 200 BLDG - 217	Amirehteshami, Marina

## ESL for Community Involvement, Intermediate to Advanced

## ESLA 261

This course covers intermediate-advanced level English to adult learners. The focus is on instruction that addresses the students' personal, family and community-based goals appropriate to their developing language abilities. It develops intermediate-advanced level listening, speaking, reading, and writing skills to prepare students to function fully in the community.

CRN	Dates	Days	Time	Location	Instructor
51458	8/15 - 12/15	MTWTh	06:00pm-08:20pm	Cypress Tech Ed 2 - 219	Staff
51466	8/15 - 12/15	MTWTh	06:00pm-08:50pm	Wilshire NOCE 200 BLDG - 219	Hug, Daniel

## ESL Academic Success

## ESL for Academic Success: Reading and Writing I

## ESLA 1060

Acquire reading and writing skills for academic success in higher level academic ESL courses, college, high school, GED, or career technical education programs. Students will participate in a variety of writing and reading activities on high-interest academic topics. Skills covered include reading for main ideas/details, sentence patterns and the writing process.

CRN	Dates	Days	Time	Location	Instructor
51577	8/15 - 10/15	Remote	Remote	ZOOM - ZOOM	Pederson, Blake
<i>Class is 14 hrs/wk. Live online class meetings MTWTh 10-11:45a (8/15-10/14/22). Zoom link from teacher.</i>					
51584	8/15 - 12/14	MTW	06:00pm-08:15pm	Anaheim Campus - 128	Serrano, Helen
51436	10/17 - 12/15	MTWTh	08:30am-11:50am	Anaheim Campus - 124	Palacio, Daniel

## ESL for Academic Success: Listening and Speaking I ESLA 1062

Acquire listening and speaking skills necessary for academic success in higher level academic ESL courses, college, high school, GED, or career technical education programs. Students will participate in a variety of listening and speaking activities on high-interest academic topics. Skills covered include listening to lectures, note taking, presentation skills and critical thinking.

CRN	Dates	Days	Time	Location	Instructor
<b>In-Person Classes</b>					
51437	8/15 - 10/13	MTWTh	08:30am-11:50am	Anaheim Campus - 124	Palacio, Daniel
<b>Online Classes</b>					
51578	10/17 - 12/17	Remote	Remote	ZOOM - ZOOM	Pederson, Blake
<i>Class is 14 hrs/wk. Live online class meetings MTWTh 10:00-11:45a (10/17-12/16/22). Zoom link from teacher.</i>					

## ESL for Academic Success: Reading and Writing II ESLA 1065

Prerequisite: ESLA 500 ESL Intermediate High or ESLA 1060 ESL for Academic Success: Reading and Writing I. Acquire reading, writing, note-taking, test-taking, critical thinking, and computer skills necessary for academic success in college, high school, GED, or career technical education programs. Learn American cultural norms in the classroom. Participate in campus life through field trips to local colleges. For advanced level ESL students.

CRN	Dates	Days	Time	Location	Instructor
<b>In-Person Classes</b>					
51417	8/15 - 12/15	MTWTh	08:00am-10:20am	Anaheim Campus - 119	Mang, Cathee
<b>Online Classes</b>					
51576	10/17 - 12/17	Remote	Remote	ZOOM - ZOOM	Stehly, Joann
<i>Class is 14 hrs/wk. Live online class meetings MTWTh 8:30-10:15a (10/16-12/16/22). Zoom link from teacher.</i>					

## ESL for Academic Success: Listening and Speaking II ESLA 1067

Prerequisite: ESLA 500 ESL Intermediate High or ESLA 1062 ESL for Academic Success: Listening and Speaking I. ESL students will practice the listening and speaking skills ESL students will practice the listening and speaking skills needed in a post-secondary academic setting, including listening to academic lectures, taking notes, participating in class discussions, giving presentations, and taking exams. Students will practice the technological skills needed for academic success and experience campus life through field trips to local colleges. For advanced level ESL students.

CRN	Dates	Days	Time	Location	Instructor
<b>In-Person Classes</b>					
51419	8/15 - 12/15	MTWTh	10:30am-12:50pm	Anaheim Campus - 119	Mang, Cathee
<b>Online Classes</b>					
51575	8/15 - 10/15	Remote	Remote	ZOOM - ZOOM	Stehly, Joann
<i>Class is 14 hrs wk. Live online class meetings MTWTh 8:30-10:15a (8/15-10/14/22). Zoom link from teacher.</i>					

## Citizenship Preparation

### Citizenship Preparation, Beginning ESLA 850

This beginner course prepares students for the US citizenship process. Students examine required forms for naturalization and prepare for their USCIS Citizenship Interview by practicing the USCIS Civics Questions, conversation strategies, and dictation. This course focuses on writing simple sentences, developing fluency in speaking and listening, and producing accurate pronunciation.

CRN	Dates	Days	Time	Location	Instructor
<b>In-Person Classes</b>					
51556	8/15 - 12/17	Remote	Remote	ZOOM - ZOOM	Hong, Song
<i>Class is 5 hrs/wk. Live online class meetings MW 8:30-10:00a (8/15-12/17/22). Zoom link from teacher.</i>					
51412	8/16 - 12/16	T Th	09:30am-11:50am	Anaheim Campus - 121	Lopez, Corinna

## Citizenship Preparation, Intermediate-Advanced

ESLA 851

This intermediate/advanced course prepares students for the US citizenship process. Students examine required forms for naturalization and prepare for the USCIS Citizenship Interview by practicing the USCIS Civics Questions, conversation strategies, and dictation. This course focuses on writing paragraphs with complex sentences while refining accuracy in speaking, listening, and pronunciation.

CRN	Dates	Days	Time	Location	Instructor
51557	8/15 - 12/17	Remote	Remote	ZOOM - ZOOM	Kim, Caroline
<i>Class is 4.5 hrs/wk. Live online class meeting F 8:30-11:30a (8/15-12/17/22). Zoom link from teacher.</i>					
51558	8/15 - 12/17	Remote	Remote	ZOOM - ZOOM	Khssassi, Zineb
<i>Class is 4.5 hrs/wk. Live online class meetings TTh 5:30-7:00p (8/15-12/17/22). Zoom link from teacher.</i>					

## ESL Specialty Classes for Beginning Students

### American Idioms, Beginning

ESLA 250

This course aims at developing language skills through the use of common North American English idioms and expressions. Receptive skills (i.e., listening and reading) are emphasized through exposure to daily life experiences.

CRN	Dates	Days	Time	Location	Instructor
51561	8/15 - 12/17	Remote	Remote	ZOOM - ZOOM	Jackson, Julia
<i>Class is 4 hrs/wk. Live online class meeting F 8:30-11:00a (8/15-12/17/22). Zoom link from teacher.</i>					

### Computer Skills for ESL - Beginning

ESLA 801

The course introduces ESL students to hands-on exploration and use of current Microsoft Windows programs. Students will learn basic computer parts, keyboarding, and the basics of MS Word, PowerPoint, Print Shop, and Excel. Emphasis is on building confidence in computer use to improve English skills in grammar, vocabulary, writing, speaking, pronunciation, and reading.

CRN	Dates	Days	Time	Location	Instructor
51547	8/15 - 12/17	Remote	Remote	ZOOM - ZOOM	Carson, Gerald
<i>Class is 2.5 hrs/wk. Live online class meeting F 8:30-10:00a (8/15-12/17/22). Zoom link from teacher.</i>					
51548	8/15 - 12/17	Remote	Remote	ZOOM - ZOOM	Peterson, Lucas
<i>Class is 2.5 hrs/wk. Live online class meeting F 10:00-11:30a (8/15-12/17/22). Zoom link from teacher.</i>					

### ESL Grammar Review, Beginning

ESLA 222

This course will teach the meanings and usages of basic English grammar structures that are frequently used in everyday situations. Students will learn how to apply grammar rules through oral and written communication. This class is designed for ESL students placed in the beginning low and beginning high levels.

CRN	Dates	Days	Time	Location	Instructor
51564	8/15 - 12/17	Remote	Remote	ZOOM - ZOOM	Sattler, Tracy
<i>Class is 4 hrs/wk. Live online class meetings F 9:00-11:30a (8/15-12/17/22). Zoom meeting from teacher.</i>					
51565	8/15 - 12/17	Remote	Remote	ZOOM - ZOOM	Stasiuk, Pedro
<i>Class is 2.5 hrs/wk. Live online class meetings MW 5:45-6:30p (8/15-12/17/22). Zoom link from teacher.</i>					

### ESL Speaking Skills, Beginning

ESLA 182

This course is designed to help English language learners at a beginning level develop and build fluency in speaking. The class will focus on accurate pronunciation and different types of spoken language used in every day situations.

CRN	Dates	Days	Time	Location	Instructor
<b>In-Person Classes</b>					
51452	8/16 - 12/15	T Th	05:30pm-07:20pm	Anaheim Campus - 119	Henel, Sylvia
<b>Online Classes</b>					
51549	8/15 - 12/17	Remote	Remote	ZOOM - ZOOM	Azarcon, Cynthia
<i>Class is 2.5 hrs/wk. Live online class meetings MW 11:30a-12:30p (8/15-12/17/22). Zoom link from teacher.</i>					
51550	8/15 - 12/17	Remote	Remote	ZOOM - ZOOM	Pico, Karina
<i>Class is 2.5 hrs/wk. Live online class meetings TTh 11:30a-12:30p (8/15-12/17/22). Zoom link from teacher.</i>					
51551	8/15 - 12/17	Remote	Remote	ZOOM - ZOOM	Kunimoto, Trisha
<i>Class is 2.5hrs/wk. Live online class meetings TTh 5:15p-6:15p (8/15-12/17/22). Zoom link from teacher.</i>					

## ESL Vocabulary Review, Beginning

ESLA 225

Students will review, expand, and retain basic vocabulary words and phrases organized by commonly used topics. Students will work on using approximately fifteen practical target words per class in oral and written exercises. This course is designed for the ESL students placed in the Beginning Low and Beginning High levels.

CRN	Dates	Days	Time	Location	Instructor
51545	8/15 - 12/17	Remote	Remote	ZOOM - ZOOM	Smith, Marlo

*Class is 2.5 hrs/wk. Live online meetings MW 5:30-6:30p (8/15-12/17/22). Zoom link from teacher.*

## ESL Writing Skills, Beginning

ESLA 185

This ESL course will acquaint students with writing skills required to develop basic-level writing techniques by focusing on sentence structure, parts of a sentence, topic sentences, body sentences and concluding sentences.

CRN	Dates	Days	Time	Location	Instructor
51562	8/15 - 12/17	Remote	Remote	ZOOM - ZOOM	Nguyen, Sophie

*Class is 2.5 hrs/wk. Live online class meetings TTh 11:30a-12:30p (8/15-12/17/22). Zoom link from teacher.*

## ESL Specialty Classes for Intermediate-Advanced Students

### American Idioms, Intermediate-Advanced

ESLA 251

This course aims at developing language skills through the use of common North American English idioms and expressions. Productive skills (i.e., speaking and writing) are emphasized by sharing daily life experiences.

CRN	Dates	Days	Time	Location	Instructor
51559	8/15 - 12/17	Remote	Remote	ZOOM - ZOOM	Filloy, Eileen
<i>Class is 2.5 hrs/wk. Live online class meetings MW 11:30a-12:30p (8/15-12/17/22). Zoom link from teacher.</i>					
51560	8/15 - 12/17	Remote	Remote	ZOOM - ZOOM	Gray, Richard
<i>Class is 2.5 hrs/wk. Live online class meetings TTh 5:15-6:15p (8/15-12/17/22). Zoom link from teacher.</i>					

### Computer Skills for ESL - Advanced

ESLA 815

Students will enhance their English language skills through challenging computer application tasks using MS Word, PowerPoint, Print Shop, Excel, the Internet, and MS Publisher. Emphasis is on building confidence in independent projects to improve English skills in grammar, vocabulary, writing, and reading. Students will be actively involved in computer projects linking the academic environment with their communities.

CRN	Dates	Days	Time	Location	Instructor
51569	8/15 - 10/14	Remote	Remote	ZOOM - ZOOM	Alvarez-Morales, Angela
<i>Class is 4 hrs/wk. Live online class meetings F 8:30-11:00a (8/15-10/14/22). Zoom link from teacher.</i>					
51570	10/17 - 12/17	Remote	Remote	ZOOM - ZOOM	Alvarez-Morales, Angela
<i>Class is 4 hrs/wk. Live online class meetings F 8:30-11:00a (10/16-12/16/22). Zoom link from teacher.</i>					

### ESL Grammar Review, Intermediate - Advanced

ESLA 223

This course will teach the meanings and usages of advanced English grammar structures that are frequently used in everyday situations. Students will learn how to apply grammar rules in oral and written communication. This class supplements core ESL courses and is designed for ESL students placed in the intermediate and advanced levels.

CRN	Dates	Days	Time	Location	Instructor
51566	8/15 - 12/17	Remote	Remote	ZOOM - ZOOM	Kopydlowska, Grazyna
<i>Class is 2.5 hrs/wk. Live online class meetings MW 11:30a-12:15p (8/15-12/17/22). Zoom link from teacher.</i>					
51567	8/15 - 12/17	Remote	Remote	ZOOM - ZOOM	Hasan, Fouton
<i>Class is 2.5 hrs/wk. Live online class meetings T 11:30a-1:00p (8/15-12/17/22). Zoom link from teacher.</i>					
51568	8/15 - 12/17	Remote	Remote	ZOOM - ZOOM	Pederson, Blake
<i>Class is 2.5 hrs/wk. Live online class meetings TTh 5:45-6:30p (8/15-12/17/22). Zoom link from teacher.</i>					

## ESL for Community Involvement, Intermediate to Advanced

ESLA 261

This course covers intermediate-advanced level English to adult learners. The focus is on instruction that addresses the students' personal, family and community-based goals appropriate to their developing language abilities. It develops intermediate-advanced level listening, speaking, reading, and writing skills to prepare students to function fully in the community.

CRN	Dates	Days	Time	Location	Instructor
51458	8/15 - 12/15	MTWTh	06:00pm-08:20pm	Cypress Tech Ed 2 - 219	Staff
51466	8/15 - 12/15	MTWTh	06:00pm-08:50pm	Wilshire NOCE 200 BLDG - 219	Hug, Daniel

## ESL Skill Building, Intermediate to Advanced

ESLA 211

The course content is relevant to the lives of students. It integrates language functions and language forms with informational sources, skills and topics. Course topics will include the process and skills needed to seek employment as well as norms in the American workforce. The course will also cover planning, traveling and finances as skills needed to function in society. Students will use the above topics to build on reading comprehension, vocabulary, listening, speaking, writing and technology skills in an online environment. Students will be required to attend an orientation and take the CASAS assessment on campus.

CRN	Dates	Days	Time	Location	Instructor
51415	8/15 - 12/17	Remote	Remote	ZOOM - ZOOM	Diaz, Carlos

*Class is 10 hrs/wk. Live online class meeting M 7:00-8:00a (8/15-12/17/22). Zoom link from teacher.*

## ESL Speaking Skills, Intermediate to Advanced

ESLA 183

This course is designed to help English language learners at the intermediate to advanced level develop and build accuracy and fluency in speaking. The class will focus on different types of spoken language, conversation strategies, pronunciation skills and everyday speaking situations.

CRN	Dates	Days	Time	Location	Instructor
<b>In-Person Classes</b>					
51420	8/15 - 12/15	M Th	02:00pm-04:20pm	Anaheim Campus - 119	Mang, Cathee
51449	8/15 - 12/12	M	06:00pm-08:50pm	Anaheim Campus - 119	Labiento, John
51450	8/17 - 12/14	W	06:00pm-08:30pm	Anaheim Campus - 119	Howie, Sherri

### Online Classes

51552	8/15 - 12/17	Remote	Remote	ZOOM - ZOOM	Stehly, Joann
<i>Class is 2.5 hrs/wk. Live online class meetings MW 11:30a-12:30p (8/15-12/17/22). Zoom link from teacher.</i>					
51553	8/15 - 12/17	Remote	Remote	ZOOM - ZOOM	Moore, Catherine
<i>Class is 2.5 hrs/wk. Live online class meetings TTh 11:30a-12:30p (8/15-12/17/22). Zoom link from teacher.</i>					
51554	8/15 - 12/17	Remote	Remote	ZOOM - ZOOM	Usary, Danny
<i>Class is 2.5 hrs/wk. Live online class meetings TTh 5:30-6:30p (8/15-12/17/22). Zoom link from teacher.</i>					
51555	8/15 - 12/17	Remote	Remote	ZOOM - ZOOM	Sahakian, Souzan
<i>Class is 2.5 hrs/wk. Live online class meetings MW 5:30-6:30p (8/15-12/17/22). Zoom link from teacher.</i>					

## ESL Vocabulary Review, Intermediate - Advanced

ESLA 226

Students will review, expand, and retain vocabulary words and phrases organized by commonly used topics. Students will work on using approximately twenty-five practical target words per class in oral and written exercises. This course is designed for the ESL students placed in the Intermediate Low, Intermediate High, and Advanced levels.

CRN	Dates	Days	Time	Location	Instructor
51546	8/15 - 12/17	Remote	Remote	ZOOM - ZOOM	Myers, Victoria

*Class is 2.5 hrs/wk. Live online class meetings TTh 11:00a-12:00p (8/15-12/17/22). Zoom link from teacher.*

## ESL Writing Skills, Intermediate to Advanced

ESLA 186

This ESL course will acquaint intermediate to advanced students with writing techniques by focusing on pre-writing, outlining, drafting, revising and editing.

CRN	Dates	Days	Time	Location	Instructor
51563	8/15 - 12/17	Remote	Remote	ZOOM - ZOOM	Espinoza, Maria

*Class is 2.5 hrs/wk. Live online class meetings TTh 5:45-6:30p (8/15-12/17/22). Zoom link from teacher.*



## ESL Community-Based/Off-Site Classes

### ESL Speaking Skills, Beginning

ESLA 182

This course is designed to help English language learners at a beginning level develop and build fluency in speaking. The class will focus on accurate pronunciation and different types of spoken language used in every day situations.

CRN	Dates	Days	Time	Location	Instructor
<b>Anaheim Union High School District (AUHSD)</b>					
51510	8/15 - 12/12	M	06:00pm-07:50pm	Sycamore Junior High School	Alvarez, Cristina
<b>Brea Community Center</b>					
51472	8/15 - 12/12	M	08:30am-11:20am	Brea Community Center	Betts, Robert
<b>Ponderosa Park Family Resource Center</b>					
51501	8/22 - 12/12	M	08:30am-11:20am	Ponderosa Park Family Resource	Macias-Reza, Mimi

### ESL for Community Involvement, Beginning

ESLA 260

This course covers beginning level English to adult learners. The focus is on instruction that addresses the students' personal, family and community-based goals appropriate to their emerging language abilities. It develops beginning level listening, speaking, reading, and writing skills to prepare students to function successfully in the community.

CRN	Dates	Days	Time	Location	Instructor
<b>Access California</b>					
51471	8/22 - 12/15	MTWTh	09:00am-12:15pm	Access California Services	Staff
<b>Anaheim Union High School District (AUHSD)</b>					
51507	8/15 - 12/15	TWTh	06:00pm-09:20pm	Ball Junior High School	Staff
51511	8/16 - 12/15	TWTh	06:00pm-09:20pm	Sycamore Junior High School	Alvarez, Cristina
<b>Brea Community Center</b>					
51473	8/16 - 12/15	TWTh	08:30am-11:50am	Brea Community Center	Betts, Robert
<b>Higher Ground Youth &amp; Family Services</b>					
51573	8/15 - 12/15	MTWTh	08:30am-11:20am	Higher Ground Youth Family Services	Zabayle, Zachary
<b>Placentia-Yorba Linda Unified School District (PYLUSD)</b>					
51493	9/6 - 12/15	MTWTh	08:10am-11:00am	Rio Vista Elementary School	Allen, Cindy
51498	9/6 - 12/15	MTWTh	08:10am-11:00am	Topaz Elementary School	Jackson, Julia
<b>Ponderosa Park Family Resource Center</b>					
51503	8/23 - 12/15	TWTh	08:30am-11:50am	Ponderosa Park Family Resource	Macias-Reza, Mimi

### ESL for Community Involvement, Intermediate to Advanced

ESLA 261

This course covers intermediate-advanced level English to adult learners. The focus is on instruction that addresses the students' personal, family and community-based goals appropriate to their developing language abilities. It develops intermediate-advanced level listening, speaking, reading, and writing skills to prepare students to function fully in the community.

CRN	Dates	Days	Time	Location	Instructor
<b>Access California</b>					
51701	8/22 - 12/15	MTWTh	09:00am-12:15pm	Access California Services	Staff

## Career Pathways For English Language Learners (ELLs)

Learners with Intermediate High-level English language skills can train for a job in just 18 weeks. Classes are taught by two instructors who support student success by teaching language and job skills at the same time. For more information, including how to register: contact 714.808.4638 or visit [noce.edu/esl/careerpathways](http://noce.edu/esl/careerpathways).

Programs available in 2022 Fall Semester:

- **Business Information Worker I for ELLs** - Fully online
- **Personal Care Aide for ELLs** - Hybrid (mostly online with some in-person meetings at the Anaheim Campus)



# ACTIVE OLDER ADULTS/EMERITUS

Designed for adults age 50 and older, but open to anyone 18+.

Empower independence, advocacy, physical and cognitive health, economic self-sufficiency, and community engagement.

Explore [noce.edu/emertus](https://noce.edu/emertus).



**Need Translated Instructions?**

**¿Necesita instrucciones traducidas?**

Haga clic en "Traducir" en la esquina superior derecha de la página. Seleccione su idioma para traducir el sitio. O llame al **714.808.4679** para obtener más ayuda.

# Program Overview

## Stay Vibrant with Emeritus Classes

### Emeritus Program Classes

- Creative Writing and Music Arts.
- Creative Arts classes include needlework, sewing, quilting, and painting.
- Mind and Body classes include health and wellness, nutrition, and brain health.
- Enrichment classes boost improvement for residents at skilled care facilities.

### Safety: Mature Driver Courses

The Mature Driver Improvement course is tailored to older adults and includes defensive driving and California motor vehicle laws. Also covered, effects that medication, fatigue, alcohol, and visual or auditory limitations have on driving ability. Mature drivers age 55 or older, who successfully complete an approved Mature Driver Improvement Course, may qualify for reduced motor vehicle insurance premiums.

### Ready to Get Started?

#### Once you've applied to NOCE...

1. If attending classes at Community/Senior Centers
  - Register for classes online using myGateway at [noce.edu/mygateway](https://noce.edu/mygateway). Check out [noce.edu/registration-info](https://noce.edu/registration-info) for details.
  - Attend class in person on the date, time, and at the location listed in the class schedule. Students will follow the COVID-19 protocols based on the community location they attend. More information at [noce.edu/vaccine](https://noce.edu/vaccine).
2. If attending classes at Skilled Nursing, Rehabilitation Centers, or Memory Care Centers
  - Available for residents only should there be a COVID-19 outbreak.

### Have Questions about Classes?

#### Call the Emeritus Program

714.808.4909 or [emeritus@noce.edu](mailto:emeritus@noce.edu).

### Need Registration Help?

#### Call StarHelp

714.808.4679 or [starhelp@noce.edu](mailto:starhelp@noce.edu).

#### ★ NOTE

Students taking in-person classes at NOCE Centers must adhere to the NOCCCD COVID-19 vaccine mandate or request an exemption. Classes held at off-site, community locations must adhere to the location's COVID-19 health guidelines. More information at [noce.edu/vaccine](https://noce.edu/vaccine).

## Mature Driver Classes

Please register online as soon as possible prior to the start of the class. We would prefer online registration but walk-in registration in the class will still be allowed. **Low enrollment will cause class to be canceled** three (3) days prior to the scheduled class start date. Please see page 10 for location addresses. For questions or assistance with registration, please contact NOCE StarHelp: **714.808.4679** or [starhelp@noce.edu](mailto:starhelp@noce.edu).

## Mature Driver Improvement

## SAFE 205

The Mature Driver Improvement course provides instruction, specifically tailored to older drivers, regarding defensive driving and California motor vehicle laws. During this course, information is provided on the effects that medication, fatigue, alcohol, and visual or auditory limitations have on a person's safe driving ability. Present the DMV certificate to your insurer as proof that you have completed the course. Mature drivers age 55 or older, who successfully complete an approved Mature Driver Improvement Course, may qualify for reduced motor vehicle insurance premiums.

CRN	Dates	Days	Time	Location	Instructor
50519	8/17 - 8/18	WTh	01:00pm-04:50pm	Brea Senior Center	Marlowe, Walter
50520	8/22 - 8/23	MT	01:00pm-04:50pm	Buena Park Senior Center	Marlowe, Walter
50522	11/28 - 11/29	MT	01:00pm-04:50pm	Buena Park Senior Center	Marlowe, Walter
51147	9/7 - 9/8	WTh	01:00pm-04:50pm	Cypress Sr Citizen Center	Marlowe, Walter
51148	11/2 - 11/3	WTh	01:00pm-04:50pm	Cypress Sr Citizen Center	Marlowe, Walter
51146	10/12 - 10/13	WTh	01:00pm-04:50pm	Fullerton Community Center	Marlowe, Walter
50518	10/8 - 10/8	S	08:00am-11:50am	La Habra Community Serv-Sr Center	Marlowe, Walter
	10/8 - 10/8	S	12:30pm-04:20pm	La Habra Community Serv-Sr Center	Marlowe, Walter
51152	12/10 - 12/10	S	08:00am-11:50am	La Habra Community Serv-Sr Center	Marlowe, Walter
	12/10 - 12/10	S	12:30pm-04:20pm	La Habra Community Serv-Sr Center	Marlowe, Walter
50516	8/20 - 8/20	S	08:00am-11:50am	Leisure World Seal Beach	Marlowe, Walter
	8/20 - 8/20	S	12:30pm-04:20pm	Leisure World Seal Beach	Marlowe, Walter
	<i>Class will be held at Club House # 3 ( Learning Center)</i>				
50517	11/12 - 11/12	S	08:00am-11:50am	Leisure World Seal Beach	Marlowe, Walter
	11/12 - 11/12	S	12:30pm-04:20pm	Leisure World Seal Beach	Marlowe, Walter
	<i>Class will be held at Club House # 3 (Learning Center).</i>				
51323	12/3 - 12/3	S	01:00pm-04:50pm	Sr Citizens Center Anaheim	Marlowe, Walter
	12/3 - 12/3	S	08:30am-12:20pm	Sr Citizens Center Anaheim	Marlowe, Walter
51144	9/14 - 9/15	WTh	01:00pm-04:50pm	Yorba Linda Sr Center	Marlowe, Walter
51145	10/19 - 10/20	WTh	01:00pm-04:50pm	Yorba Linda Sr Center	Marlowe, Walter

## Communication

## Senior Topics for Older Adults

## EDEN 100

This course presents older adults with various topics for discussion and class activities based on the students' individual interest, backgrounds, physical and mental abilities. Older adults are encouraged to share and compare life experiences, and learn about international, national and local events and issues from a current and historical viewpoint.

CRN	Dates	Days	Time	Location	Instructor
50104	8/18 - 12/15	Th	03:00pm-04:50pm	Brookdale Anaheim	Fischer, Hildy
50130	8/19 - 12/16	F	02:30pm-04:20pm	Brookdale Anaheim	Gomes, Mary
50986	8/15 - 12/12	M	01:00pm-02:50pm	Buena Park Nurs Center	Harris, Amy
50513	8/16 - 12/13	T	01:30pm-03:20pm	Buena Vista Care Center	Hertogh, Lorna
50135	8/19 - 12/16	F	09:30am-11:20am	Buena Vista Care Center	Gomes, Mary
50988	8/16 - 12/13	T	01:00pm-02:50pm	Cambridge Court	Harris, Amy
50990	8/19 - 12/16	F	09:30am-11:20am	Chapman Care Center	Harris, Amy
50102	8/16 - 12/13	T	01:00pm-02:50pm	Cottage of Artesia Gardens	Fischer, Hildy

50156	8/16 - 12/13	T	01:30pm-03:20pm	Crescent Landing Garden Grove	Johnson, Lisa
50084	8/17 - 12/14	W	09:30am-11:20am	Crescent Landing Garden Grove	Belknap, Jeannie
50515	8/16 - 12/13	T	09:00am-10:50am	Cypress Sr Citizen Center	Heins, Gincy-Jane
50985	8/16 - 12/13	T	09:30am-11:20am	Emerald Court	Gable, Mary
50103	8/17 - 12/14	W	08:45am-10:35am	Emerald Court	Fischer, Hildy
51691	8/17 - 12/14	W	10:30am-12:20pm	Emerald Isle Senior Apartments	Lange-Goldstein, Laureen
50174	8/15 - 12/22	W	01:30pm-03:20pm	Fullerton Community Center	Lange-Goldstein, Laureen
50112	8/19 - 12/16	F	03:15pm-05:05pm	Gordon Lane Care Center	Gable, Mary
51383	8/16 - 12/13	T	09:00am-10:50am	Ivy Park at Bradford	Johnson, Lisa
50512	8/19 - 12/16	F	10:00am-11:50am	Karlton Residential Care Center	Hertogh, Lorna
50158	8/17 - 12/14	W	10:00am-11:50am	La Habra Conv Hospital	Johnson, Lisa
50989	8/17 - 12/14	W	09:30am-11:20am	La Palma Nurs Center	Harris, Amy
50226	8/17 - 12/14	W	02:00pm-03:50pm	Leisure Court	Miller, Joy
50227	8/17 - 12/21	W	05:30pm-07:20pm	Leisure Court	Miller, Joy
50083	8/18 - 12/15	Th	01:30pm-03:20pm	Leisure Court	Belknap, Jeannie
50445	8/19 - 12/16	F	10:00am-11:50am	Leisure World Seal Beach	Bloom, Danielle
<i>Class will be held at Club House # 3 (Learning Center).</i>					
50230	8/15 - 12/12	M	05:00pm-06:50pm	Rowntree Gardens	Miller, Joy
50166	8/19 - 12/16	F	02:30pm-04:20pm	Orangegrove Rehab Hospital	Kim, Hannah
50136	8/17 - 12/14	W	01:30pm-03:20pm	Palm Retirement Center	Gomes, Mary
50228	8/16 - 12/13	T	03:00pm-04:50pm	Park Anaheim Healthcare Center	Miller, Joy
50229	8/16 - 12/13	T	06:00pm-07:50pm	Park Anaheim Healthcare Center	Miller, Joy
50132	8/17 - 12/14	W	10:00am-11:50am	Park Anaheim Healthcare Center	Gomes, Mary
50113	8/15 - 12/12	M	01:00pm-02:50pm	Park Regency Ret Res	Gable, Mary
50133	8/18 - 12/15	Th	01:30pm-03:20pm	Park Vista Assisted Living	Gomes, Mary
50162	8/18 - 12/15	Th	09:00am-10:50am	Park Vista Assisted Living	Johnson, Lisa
50161	8/15 - 12/12	M	10:00am-11:50am	Park Vista at Morningside	Johnson, Lisa
50117	8/17 - 12/14	W	01:30pm-03:20pm	Park Vista at Morningside	Gable, Mary
50116	8/19 - 12/16	F	09:45am-11:35am	Serento Rosa Senior Living	Gable, Mary
50159	8/15 - 12/12	M	02:00pm-03:50pm	St Catherine	Johnson, Lisa
50114	8/18 - 12/15	Th	09:45am-11:35am	St. Elizabeth Healthcare	Gable, Mary
50992	8/19 - 12/16	F	01:30pm-03:20pm	St. Elizabeth Healthcare	Harris, Amy
50165	8/18 - 12/15	Th	03:15pm-05:05pm	Sun Mar Nursing Center	Kim, Hannah
50131	8/16 - 12/13	T	09:30am-11:20am	Sunrise Asst Liv Fullerton	Gomes, Mary
50511	8/18 - 12/15	Th	09:30am-11:20am	Sunrise Asst Liv Fullerton	Hertogh, Lorna
50085	8/15 - 12/12	M	01:00pm-02:50pm	Sunrise Asst Living La Palma	Belknap, Jeannie
50110	8/15 - 12/12	M	03:15pm-05:05pm	The Pavilion at Sunny Hills	Gable, Mary
50160	8/17 - 12/14	W	01:00pm-02:50pm	The Pavilion at Sunny Hills	Johnson, Lisa
50508	8/18 - 12/15	Th	01:00pm-02:50pm	The Pavilion at Sunny Hills	Hertogh, Lorna
50157	8/15 - 12/22	Th	09:15am-11:05am	W Anaheim Extended Care Hospital	Johnson, Lisa
50997	8/15 - 12/12	M	07:00pm-08:50pm	Walnut Manor Rehab Care Center	Harris, Amy
50115	8/17 - 12/14	W	09:30am-11:20am	Walnut Manor Rehab Care Center	Gable, Mary
51470	8/17 - 12/14	W	01:30pm-03:20pm	Walnut Manor Rehab Care Center	Harris, Amy
51586	8/18 - 12/15	Th	12:45pm-02:35pm	Westmont Cypress Compass Rose	Fischer, Hildy
50509	8/17 - 12/14	W	09:30am-11:20am	Whittier Hills Healthcare Center	Hertogh, Lorna
50134	8/15 - 12/12	M	09:30am-11:20am	Windsor Gardens of Anaheim	Gomes, Mary

## Journey Back In Time for Older Adults

**ENCO 501**

This class offers older adults students the opportunity to explore and share their personal histories, cultures, and values among older adult students through group discussion. Shared experiences, memories and linking the past with the present, encourage self-awareness, positive self-esteem, mental stimulation, and enjoyment.

CRN	Dates	Days	Time	Location	Instructor
50231	8/15 - 12/12	M	02:00pm-03:50pm	W Anah Extended Care Hospital	Miller, Joy

## Creative Writing for Seniors

ABE 240

This course for older adults teaches both beginning and experienced writers how to create shape autobiographies, fiction and non-fiction writing, and poetry into readable and publishable forms.

CRN	Dates	Days	Time	Location	Instructor
50929	8/16 - 12/13	T	06:30pm-08:20pm	Morningside of Fullerton	Edwards, June
51699	8/16 - 12/13	T	01:00pm-02:50pm	Cypress Sr Citizen Ctr	Edwards, June

## Creative Arts

### Creative Arts for Older Adults

CRAE 100

This class for older adults encourages art appreciation, self-expression, and creativity through a variety of art media. Projects are designed to expose older adult students to artistic design, and to give experience with different artistic methods, techniques, tools, and materials.

CRN	Dates	Days	Time	Location	Instructor
50138	8/16 - 12/13	T	02:00pm-03:50pm	Alamitos West Health Care Center	Harry, Honour
51494	8/15 - 12/12	M	11:30am-01:20pm	Anaheim Crown Plaza	Thakkar, Nirali
51492	8/18 - 12/15	Th	03:00pm-04:50pm	Anaheim Crown Plaza	Shneezai, Meena
51474	8/18 - 12/15	F	09:30am-11:20am	Brookdale Anaheim	Hyatt Solomina, Yelena
50355	8/18 - 12/15	Th	02:00pm-03:50pm	Buena Park Nurs Center	Yoo, Joy
50139	8/15 - 12/12	M	10:30am-12:20pm	Chapman Care Center	Harry, Honour
50358	8/19 - 12/16	F	09:45am-11:35am	Crescent Landing Garden Grove	Yoo, Joy
50297	8/17 - 12/14	W	02:00pm-03:50pm	Gordon Lane Care Center	Thakkar, Nirali
51375	8/15 - 12/22	W	09:30am-11:20am	Harbor Villa Care Center	Harry, Honour
51505	8/15 - 12/12	M	09:30am-11:20am	Harbor Villa Care Center	Yoo, Joy
51693	8/17 - 12/14	W	02:00pm-03:50pm	Ivy Park at Bradford	Yoo, Joy
50236	8/16 - 12/13	T	02:30pm-04:20pm	Karlton Residential Care Center	Ngo, Tammy
50352	8/16 - 12/13	T	02:00pm-03:50pm	La Habra Conv Hospital	Yoo, Joy
50299	8/15 - 12/12	M	09:00am-10:50am	Leisure Court	Thakkar, Nirali
50282	8/15 - 12/12	M	01:30pm-03:20pm	Orangegrove Rehab Hospital	Shneezai, Meena
50234	8/17 - 12/14	W	02:30pm-04:20pm	Orangegrove Rehab Hospital	Ngo, Tammy
50298	8/19 - 12/16	F	02:00pm-03:50pm	Park Anaheim Healthcare Center	Thakkar, Nirali
51504	8/17 - 12/14	W	09:30am-11:20am	Park Regency Ret Res	Yoo, Joy
51692	8/18 - 12/15	Th	09:30am-11:20am	Park Vista at Morningside	Yoo, Joy
50237	8/15 - 12/12	M	09:00am-10:50am	St Catherine	Ngo, Tammy
50239	8/16 - 12/13	T	09:30am-11:20am	Sunrise Asst Liv Fullerton	Ngo, Tammy
50283	8/17 - 12/14	W	01:00pm-02:50pm	Sunrise Asst Liv Fullerton	Shneezai, Meena
50149	8/20 - 12/17	S	09:30am-11:20am	Sunrise Asst Living La Palma	Hyatt Solomina, Yelena
50147	8/20 - 12/17	S	02:00pm-03:50pm	W Anah Extended Care Hospital	Hyatt Solomina, Yelena

### Painting for Older Adults

CRAE 105

This class offers older adults an individualized approach to learning painting and artistic expression at their own pace and within their interest and style. Older adult will learn techniques in drawing, brush strokes, and color mixing and application.

CRN	Dates	Days	Time	Location	Instructor
50151	8/17 - 10/12	W	12:00pm-03:50pm	Buena Park Senior Center	Hyatt Solomina, Yelena
50152	10/19 - 12/14	W	12:00pm-03:50pm	Buena Park Senior Center	Hyatt Solomina, Yelena
<b>Students must enroll in both CRN 50151 (8/17-10/12) and CRN 50152 (10/19-12/14) to complete a semester.</b>					
50097	8/16 - 12/13	T	09:00am-10:50am	Emerald Isle Senior Apartments	Clary, Ling Ling
50150	8/18 - 10/13	Th	12:00pm-03:50pm	Sr Citizens Center Anaheim	Hyatt Solomina, Yelena
50153	10/20 - 12/15	Th	12:00pm-03:50pm	Sr Citizens Center Anaheim	Hyatt Solomina, Yelena
<b>Students must enroll in both CRN 50150 (8/18-10/13) and CRN 50153 (10/20-12/15) to complete a semester.</b>					
50451	8/15 - 10/10	M	08:00am-11:50am	Yorba Linda Sr Center	Clary, Ling Ling
50452	10/17 - 12/12	M	08:00am-11:50am	Yorba Linda Sr Center	Clary, Ling Ling
<b>Students must enroll in both CRN 50451 (8/15-10/10) and CRN 50452 (10/17-12/12) to complete a semester.</b>					

## Ceramics for Older Adults

## CRAE 101

This course in basic ceramics for older adults includes lecture, demonstration, and application of ceramic artwork. Students will learn mold selection, glazing, decorating techniques, and proper firing procedures. Individual artistic creativity is encouraged and completed art projects of the older adult students are often displayed publicly.

CRN	Dates	Days	Time	Location	Instructor
50457	8/18 - 10/13	Th	08:00am-11:50am	Buena Park Senior Center	Trapani, Cheryl
50458	10/20 - 12/15	Th	08:00am-11:50am	Buena Park Senior Center	Trapani, Cheryl
<i>Students must enroll in both CRN 50457 (8/18-10/13) and CRN 50458 (10/20-12/15) to complete a semester.</i>					
50459	8/16 - 10/11	T	12:50pm-04:40pm	Cypress Sr Citizen Center	Trapani, Cheryl
50460	10/18 - 12/13	T	12:50pm-04:40pm	Cypress Sr Citizen Center	Trapani, Cheryl
<i>Students must enroll in both CRN 50459 (8/16-10/11) and CRN 50460 (10/18-12/13) and to complete a semester.</i>					
51326	8/16 - 10/11	T	08:30am-12:20pm	Leisure World Seal Beach	Trapani, Cheryl
51327	10/18 - 12/13	T	08:30am-12:20pm	Leisure World Seal Beach	Trapani, Cheryl
<i>Students must enroll in both CRN 51326 (8/16-10/11) and CRN 51327 (10/18-12/13) and to complete a semester. Class will be held at Club House #4 (Ceramics Studio).</i>					
50461	8/18 - 10/13	Th	12:45pm-04:35pm	Leisure World Seal Beach	Trapani, Cheryl
50462	10/20 - 12/15	Th	12:45pm-04:35pm	Leisure World Seal Beach	Trapani, Cheryl
<i>Students must enroll in both CRN 50462 (10/20-12/15) and CRN 50461 (8/18-10/13) to complete a semester. Class will be held at Club House # 4 (Ceramics Studio)</i>					

## Quilting for Older Adults

## CRAE 106

This course offers the essentials of quilting, for older adults students, which includes fabric selection, cutting, and sewing methods along with the history and vocabulary of the craft. Special techniques for older adults are covered such as patchwork, applique, hand and machine methods, and finishing techniques.

CRN	Dates	Days	Time	Location	Instructor
50098	8/16 - 10/11	T	12:30pm-04:20pm	Buena Park Senior Center	Smith, Larene
50099	10/18 - 12/13	T	12:30pm-04:20pm	Buena Park Senior Center	Smith, Larene
<i>Students must enroll in both CRN 50098 (8/16-10/11) ad CRN 50099 (10/18-12/13) to complete a semester.</i>					
50284	8/15 - 12/12	M	10:00am-11:50am	Cypress Sr Citizen Center	Smith, Larene
50456	8/19 - 10/14	F	08:30am-12:20pm	Yorba Linda Sr Center	Smith, Larene
50454	10/21 - 12/16	F	08:30am-12:20pm	Yorba Linda Sr Center	Smith, Larene
<i>Students must enroll in both CRN 50456 (8/19-10/14) and CRN 50454 (10/21-12/16) to complete a semester.</i>					

## Needlecrafts, Knitting, Crochet for Older Adults

## CRAE 104

Older adult students will learn the practical application, knowledge, and skills required to create knitted, crocheted, needlepoint, and cross-stitched hand-made items. A wide variety of items are created, by older adult students, including decorations for the home and clothing for babies, children and adults.

CRN	Dates	Days	Time	Location	Instructor
50089	8/18 - 12/15	Th	09:00am-10:50am	Fullerton Community Center	Bowman, Ashley
51463	8/17 - 12/14	W	02:00pm-03:50pm	Leisure World Seal Beach	Bowman, Ashley
<i>Class will be held at Club House # 3 (Needle Arts Studio).</i>					
50087	8/18 - 12/15	Th	01:00pm-02:50pm	Yorba Linda Sr Ctr	Bowman, Ashley

## Senior Chorus

## MUSC 303

This course introduces older adult students to a broad spectrum of choral music including its cultural and historical aspects. Older adult students will gain knowledge of correct posture, breath control, enunciation, harmony, rhythm and basic music concepts appropriate for the older adult.

CRN	Dates	Days	Time	Location	Instructor
50177	8/19 - 12/16	F	09:30am-11:20am	Cypress Sr Citizen Center	Lassetter, Elizabeth
51344	8/15 - 12/12	M	10:00am-11:50am	Leisure World Seal Beach	Lassetter, Elizabeth
<i>Class will be held at Leisure World Amphitheater.</i>					

## Music Arts for Older Adults

## MUSC 200

This course provides stimulating interaction for older adults through musical reminiscence, discussions, and listening to music from different time periods and genres. Older Adult students will participate in sing-alongs and rhythmic activities. Older adult students will learn to appreciate and understand different varieties of music.

CRN	Dates	Days	Time	Location	Instructor
50058	8/17 - 12/14	W	09:30am-11:20am	Alamitos West Health Care Center	Baker, Nathalie
50242	8/18 - 12/15	Th	10:00am-11:50am	Anaheim Crown Plaza	Park, Moses
50051	8/17 - 12/14	W	09:30am-11:20am	Anaheim VIP Center	Baesler, Joshua
50244	8/19 - 12/16	F	01:00pm-02:50pm	Arbor Palms of Anaheim	Park, Moses
50203	8/19 - 12/16	F	01:30pm-03:20pm	Buena Vista Care Center	Martin, Karen
50060	8/17 - 12/14	W	09:00am-10:50am	Cambridge Court	Behrbaum, Patricia
51607	8/16 - 12/13	T	09:00am-10:50am	Crescendo Senior Living of Pl	Mastin, Ursula
50271	8/16 - 12/13	T	09:30am-11:20am	Crescent Landing Garden Grove	Proppe, Jean
50061	8/18 - 12/15	Th	01:00pm-02:50pm	Emerald Court	Behrbaum, Patricia
50201	8/16 - 12/13	T	01:30pm-03:20pm	Harvest Retirement	Baker, Nathalie
50062	8/15 - 12/12	M	08:30am-10:20am	Ivy Park at Bradford	Behrbaum, Patricia
50243	8/15 - 12/12	M	01:00pm-02:50pm	Ivy Park at Bradford	Park, Moses
51694	8/18 - 12/15	Th	03:00pm-04:50pm	Ivy Park at Bradford	Park, Moses
50270	8/18 - 12/15	Th	09:00am-10:50am	La Habra Conv Hospital	Proppe, Jean
50199	8/19 - 12/16	F	09:30am-11:20am	La Palma Nurs Center	Martin, Karen
50049	8/17 - 12/14	Th	10:00am-11:50am	Park Anaheim Healthcare Center	Baesler, Joshua
51574	8/17 - 12/14	W	01:45pm-03:35pm	Park Anaheim Healthcare Center	Behrbaum, Patricia
50053	8/19 - 12/16	F	03:00pm-04:50pm	Park Regency Ret Res	Baker, Nathalie
50048	8/16 - 12/13	T	09:30am-11:20am	Park Vista at Morningside	Baesler, Joshua
50056	8/17 - 12/14	W	03:30pm-05:20pm	Park Vista at Morningside	Baker, Nathalie
50101	8/19 - 12/16	F	09:30am-11:20am	Park Vista at Morningside	Ediger, Jeremy
50064	8/16 - 12/13	T	09:00am-10:50am	Rowntree Gardens	Behrbaum, Patricia
50206	8/17 - 12/14	W	01:30pm-03:20pm	Serento Rosa Senior Living	Martin, Karen
50317	8/18 - 12/15	Th	02:00pm-03:50pm	St Catherine	Martin, Karen
50052	8/17 - 12/14	W	01:30pm-03:20pm	St. Elizabeth Healthcare	Baesler, Joshua
51478	8/17 - 12/14	W	09:30am-11:20am	Sunnycrest Senior Living	Park, Moses
50175	8/15 - 12/12	M	01:30pm-03:20pm	Sunrise of Seal Beach	Lassetter, Elizabeth
50240	8/17 - 12/14	W	01:00pm-02:50pm	The Pavilion at Sunny Hills	Park, Moses
50066	8/18 - 12/15	Th	09:30am-11:20am	The Pavilion at Sunny Hills	Behrbaum, Patricia
50050	8/18 - 12/15	Th	02:00pm-03:50pm	W Anaheim Extended Care Hospital	Baesler, Joshua
50065	8/16 - 12/13	T	01:30pm-03:20pm	Walnut Manor Rehab Care Center	Behrbaum, Patricia
50063	8/15 - 12/12	M	12:30pm-02:20pm	Whitten Heights	Behrbaum, Patricia
51453	8/18 - 12/15	Th	09:30am-11:20am	Whitten Heights	Baker, Nathalie
50100	8/20 - 12/17	S	09:30am-11:20am	Whitten Heights	Ediger, Jeremy
50057	8/18 - 12/15	Th	01:00pm-02:50pm	Whittier Glen	Baker, Nathalie
51695	8/15 - 12/12	M	09:30am-11:20am	Whittier Hills Healthcare Center	Mastin, Ursula
50054	8/18 - 12/15	Th	03:15pm-05:05pm	Whittier Hills Healthcare Center	Baker, Nathalie
50241	8/19 - 12/16	F	09:30am-11:20am	Windsor Gardens of Anaheim	Park, Moses



## Body & Mind

### Tone Chime Choir for Older Adults

MUSC 304

This course provides instruction to older adults on handbell performance skills using chime instruments made by Suzuki. The music will be beginning level handbell music, level 1 and 2, as defined by the American Guild of English Hand Bell Ringers. The class will share their music by performing to the community in different public venues.

CRN	Dates	Days	Time	Location	Instructor
51345	8/18 - 12/15	Th	10:00am-11:50am	Leisure World Seal Beach	Lassetter, Elizabeth
	<i>Class will be held at Club House # 3, Room 9.</i>				
50178	8/17 - 12/14	W	12:00pm-01:50pm	Sr Citizens Ctr Anaheim	Lassetter, Elizabeth

### Help Yourself to Health for Older Adults

HLTH 163

Various health related topics of interest to older adults will be discussed and safe, beneficial, exercises intended to promote general health and fitness for older adults will be introduced. Each class will incorporate information, discussion, and exercises.

CRN	Dates	Days	Time	Location	Instructor
50371	8/19 - 12/16	F	03:00pm-04:50pm	Cypress Sr Citizen Center	Yu, Kenneth
50366	8/17 - 12/14	W	12:30pm-02:20pm	Fullerton Community Center	Yu, Kenneth
50368	8/19 - 12/16	F	12:30pm-02:20pm	Fullerton Community Center	Yu, Kenneth
50207	8/18 - 12/15	Th	12:30pm-02:20pm	Sr Citizens Center Anaheim	Mastin, Kathleen
50218	8/17 - 12/14	W	09:00am-10:50am	Stanton Civic Center	Matikinyidze, Rufaro

### Staying Mentally Sharp for Older Adults

HLTH 167

This course provides older adults with the tools to reach their optimum levels of brainpower through skill-building with memory techniques. Also covered are decision-making, problem-solving, planning, and determining opportunities for cognitive growth.

CRN	Dates	Days	Time	Location	Instructor
50528	8/15 - 10/12	M W	03:30pm-05:20pm	Buena Park Senior Center	Belknap, Jeannie
50529	10/17 - 12/14	M W	03:30pm-05:20pm	Buena Park Senior Center	Belknap, Jeannie
	<i>Students must enroll in both CRN 50528 (8/15-10/12) and CRN 50529 (10/17-12/14) to complete a semester.</i>				
50526	8/16 - 10/13	T Th	09:00am-10:50am	Fullerton Community Center	Belknap, Jeannie
50527	10/18 - 12/15	T Th	09:00am-11:50am	Fullerton Community Center	Belknap, Jeannie
	<i>Students must enroll in both CRN 50526 (8/16-10/13) and CRN 50527 (10/18-12/15) to complete a semester.</i>				
50446	8/19 - 12/16	F	12:00pm-01:50pm	Leisure World Seal Beach	Bloom, Danielle
	<i>Class will be held at Club House # 3 (Learning Center)</i>				
51703	8/18 - 12/15	Th	01:00pm-02:50pm	Westmont of Cypress	Belknap, Jeannie

### Food Preparation and Good Nutrition for Older Adults HLTH 109

This course offers a wide range of food preparation topics as they relate to the health and well-being of older adults. The course explores topics of interest for older adults in the areas of nutrition, consumerism, cultural traditions, entertaining, health, and safety. Various foods will be prepared, tasted, and discussed.

CRN	Dates	Days	Time	Location	Instructor
51499	8/18 - 12/15	Th	02:00pm-03:50pm	Alamitos West Health Care Center	Villarreal, Maria
51347	8/15 - 12/12	M	02:00pm-03:50pm	Anaheim Terrace Care Center	Salgado, Guadalupe
50279	8/17 - 12/14	W	09:30am-11:20am	Coventry Court Health Center	Salgado, Guadalupe
50312	8/18 - 12/15	Th	09:30am-11:20am	Gordon Lane Care Center	Villarreal, Maria
51496	8/15 - 12/12	M	09:30am-11:20am	La Palma Nurs Center	Villarreal, Maria
50278	8/15 - 12/12	M	02:00pm-03:50pm	Orangegrove Rehab Hospital	Salgado, Guadalupe
51497	8/15 - 12/12	M	01:30pm-03:20pm	Park Vista Assisted Living	Villarreal, Maria
50274	8/16 - 12/13	T	09:00am-10:50am	Serento Rosa Senior Living	Rose, Rachel
50275	8/16 - 12/13	T	01:00pm-02:50pm	Serento Rosa Senior Living	Rose, Rachel
50313	8/16 - 12/13	T	09:30am-11:20am	The Pavilion at Sunny Hills	Villarreal, Maria
51491	8/19 - 12/16	F	09:00am-10:50am	Walnut Manor Rehab Care Center	Salgado, Guadalupe
50311	8/19 - 12/16	F	02:00pm-03:50pm	Whittier Hills Healthcare Center	Villarreal, Maria

## History of Comedy and Humor for Older Adults

HLTH 161

This class offers to older adults an informative look at past and present forms of comedy and humor, as it relates to their life experiences and what make them laugh. Older adult students become aware of the influences, various mediums, elements and forms of comedy and humor that has influences people throughout history.

CRN	Dates	Days	Time	Location	Instructor
50109	8/16 - 12/13	T	09:30am-11:20am	Alamitos West Health Care Center	Fischer, Hildy
50107	8/17 - 12/14	W	01:00pm-02:50pm	Cottage of Artesia Gardens	Fischer, Hildy
50108	8/18 - 12/15	Th	09:00am-10:50am	Park Regency Care Center	Fischer, Hildy
50086	8/16 - 12/13	T	01:30pm-03:20pm	Park Vista at Morningside	Belknap, Jeannie

## Health and Wellness for Older Adults

HLTH 200

Learn the benefits of adopting behaviors associated with healthy and successful aging. Focus on the natural effects of the aging process and the benefits of being proactive by using a healthy diet, managing chronic conditions, and engaging in routine physical activity as a means to living with optimum independence.

CRN	Dates	Days	Time	Location	Instructor
51346	8/17 - 12/14	W	02:00pm-03:50pm	Anaheim Terrace Care Center	Kim, Hannah
50181	8/15 - 12/12	M	10:00am-11:50am	Brea Senior Center	Layne, Jonathan
50219	8/16 - 12/13	T	10:00am-11:50am	Brea Senior Center	Matikinyidze, Rufaro
50220	8/18 - 12/15	Th	09:30am-11:20am	Brea Senior Center	Matikinyidze, Rufaro
50209	8/15 - 12/22	F	09:30am-11:20am	Buena Park Senior Center	Mastin, Kathleen
50221	8/15 - 12/12	M	09:30am-11:20am	Buena Park Senior Center	Matikinyidze, Rufaro
50374	8/15 - 12/12	M	01:00pm-02:50pm	Buena Park Senior Center	Yu, Kenneth
50092	8/16 - 12/13	T	12:30pm-02:20pm	Buena Park Senior Center	Carter-Rosenbloom, Robin
50208	8/16 - 12/13	T	09:30am-11:20am	Buena Park Senior Center	Mastin, Kathleen
50397	8/17 - 12/14	W	01:00pm-02:50pm	Buena Park Senior Center	Wotring, Janine
50091	8/18 - 12/15	Th	10:00am-11:50am	Buena Park Senior Center	Carter-Rosenbloom, Robin
50210	8/15 - 12/12	M	01:00pm-02:50pm	Cypress Sr Citizen Center	Mastin, Kathleen
50377	8/15 - 12/12	M	10:20am-12:10pm	Cypress Sr Citizen Center	Yu, Kenneth
50179	8/18 - 12/15	Th	01:00pm-02:50pm	Cypress Sr Citizen Center	Layne, Jonathan
50211	8/18 - 12/15	Th	09:45am-11:35am	Cypress Sr Citizen Center	Mastin, Kathleen
50383	8/16 - 12/13	T	12:30pm-02:20pm	Emerald Isle Senior Apartments	Yu, Kenneth
50380	8/18 - 12/15	Th	12:30pm-02:20pm	Emerald Isle Senior Apartments	Yu, Kenneth
50093	8/16 - 12/13	T	10:00am-11:50am	Fullerton Community Center	Carter-Rosenbloom, Robin
51477	8/19 - 12/16	F	09:00am-10:50am	Fullerton Community Center	Matikinyidze, Rufaro
50213	8/15 - 12/12	M	10:00am-11:50am	La Habra Community Serv-Sr Center	Mastin, Kathleen
51509	8/18 - 12/15	Th	09:30am-11:20am	Leisure World Seal Beach	Zepeda, Eva
<i>Class will be held at Club House # 4, Section A.</i>					
50168	8/16 - 12/13	T	01:30pm-03:20pm	Orangegrove Rehab Hospital	Kim, Hannah
51583	8/19 - 12/16	F	11:00am-12:50pm	Park Vista Assisted Living	Matikinyidze, Rufaro
50335	8/16 - 12/13	T	10:00am-11:50am	Sr Citizens Center Anaheim	Wotring, Janine
50400	8/16 - 12/13	T	09:00am-10:50am	Stanton Civic Center	Zepeda, Eva
50167	8/15 - 12/12	M	03:15pm-05:05pm	Sun Mar Nursing Center	Kim, Hannah
51502	8/18 - 12/15	Th	09:30am-11:20am	Sunnycrest Senior Living	Wotring, Janine
50404	8/15 - 12/22	F	09:30am-11:20am	Sunrise Asst Liv Fullerton	Zepeda, Eva
50184	8/17 - 12/14	W	10:00am-11:50am	West Anaheim Sr Prog	Layne, Jonathan
50349	8/15 - 12/12	M	09:00am-10:50am	Fullerton Community Center	Wotring, Janine
50180	8/16 - 12/13	T	10:30am-12:20pm	Yorba Linda Sr Center	Layne, Jonathan
50182	8/17 - 12/14	W	02:00pm-03:50pm	Yorba Linda Sr Center	Layne, Jonathan
51154	8/17 - 12/14	W	10:00am-11:50am	Yorba Linda Sr Center	Yu, Kenneth
50183	8/18 - 12/15	Th	10:30am-12:20pm	Yorba Linda Sr Center	Layne, Jonathan
50346	8/19 - 12/16	F	09:30am-11:20am	Yorba Linda Sr Center	Wotring, Janine

## Health and Wellness for Older Adults: Restricted Mobility HLTH 205

This course provides older adults with techniques and strategies for healthy aging when restricted by physical impairments or limited mobility. Emphasis is on the benefits of managing age-related complications or medical conditions, routine and adaptive physical activity and a healthy diet.

CRN	Dates	Days	Time	Location	Instructor
51486	8/18 - 12/15	Th	09:30am-11:20am	Alamitos West Health Care Center	Penn, Marcelle
51479	8/16 - 12/20	T	09:30am-11:20am	Anaheim Terrace Care Center	Penn, Marcelle
50285	8/16 - 12/13	T	09:30am-11:20am	Brea Memory Care Community	Smith, Karin
50222	8/15 - 12/13	M	01:00pm-02:50pm	Brookdale Anaheim	Matikinyidze, Rufaro
50225	8/16 - 12/13	T	01:00pm-02:50pm	Brookdale Anaheim	Matikinyidze, Rufaro
50069	8/17 - 12/14	W	01:30pm-03:20pm	Buena Park Nurs Center	Adams, Stephanie
50288	8/18 - 12/15	Th	09:30am-11:20am	Coventry Court Health Center	Smith, Karin
50386	8/18 - 12/15	Th	03:00pm-04:50pm	Gordon Lane Care Center	Yu, Kenneth
50068	8/19 - 12/16	F	09:30am-11:20am	Harbor Villa Care Center	Adams, Stephanie
51704	8/17 - 12/15	W	09:00am-10:50am	La Habra Community Center	Zepeda, Eva
50412	8/15 - 12/12	M	09:00am-10:50am	La Habra Conv Hospital	Zepeda, Eva
50070	8/16 - 12/13	T	09:30am-11:20am	La Habra Conv Hospital	Adams, Stephanie
51487	8/18 - 12/15	Th	03:00pm-04:50pm	Park Anaheim Healthcare Center	Penn, Marcelle
50246	8/19 - 12/16	F	10:50am-12:50pm	Park Anaheim Healthcare Center	Penn, Marcelle
50983	8/17 - 12/14	W	09:30am-11:20am	Park Regency Care Center	Smith, Karin
51155	8/18 - 12/15	Th	09:30am-11:20am	Park Regency Ret Res	Yu, Kenneth
50289	8/15 - 12/12	M	09:30am-11:20am	Park Vista Assisted Living	Smith, Karin
51488	8/17 - 12/14	W	01:30pm-03:20pm	Rowntree Gardens	Penn, Marcelle
51489	8/19 - 12/16	F	08:30am-10:20am	Rowntree Gardens	Penn, Marcelle
51490	8/17 - 12/14	W	09:30am-11:20am	St. Elizabeth Healthcare	Penn, Marcelle
50067	8/15 - 12/12	M	09:30am-11:20am	The Pavilion at Sunny Hills	Adams, Stephanie
51585	8/19 - 12/16	F	01:00pm-02:50pm	The Pavilion at Sunny Hills	Adams, Stephanie
50248	8/19 - 12/16	F	01:30pm-03:20pm	Whitten Heights	Penn, Marcelle
50407	8/19 - 12/16	F	02:00pm-03:50pm	Windsor Gardens of Anaheim	Zepeda, Eva



# PARENTING

Improve parenting skills.

Deepen connections with the children in your life.

Create a thriving home.

Explore [noce.edu/parenting](https://noce.edu/parenting).



**Need Translated Instructions?**

**¿Necesita instrucciones traducidas?**

Haga clic en “Traducir” en la esquina superior derecha de la página. Seleccione su idioma para traducir el sitio. O llame al 714.808.4679 para obtener más ayuda.

# Program Overview

In a world that is ever-changing, parents, grandparents, foster parents, and guardians can learn positive parenting techniques in a friendly and safe environment.

- Enhance parent and child relationships.
- Learn techniques to raise children and teens who flourish.
- Develop effective communication skills.
- Build positive social, emotional, and creative environments.

## Parent-and-Me Classes

Parent-and-Me classes are a lifeline for parents of young children. Enjoyed by an enrolled adult along with a child ages one to five years, parents and other adult caregivers learn about child development through observation and interaction.

## Love and Logic® Classes

Love and Logic® courses offer a new and specific way to parent using a unique approach. Parents and caregivers develop practical skills for reinforcing expectations of their children's behavior at home and school. Classes consist of six subsets of skills that empower parents. Love and Logic® is a registered trademark of the Love and Logic® Institute, Inc.

## Child Wellness

Students taking these courses will learn how to contribute to the critical factors that ensure children's lifelong health and wellness. Students expand their knowledge to better support, encourage, and connect with the children in their lives and learn to model critical life skills that make a difference now and in the future.

## Ready to Get Started?

### Once you've applied to NOCE...

1. Register for classes online using myGateway at [noce.edu/mygateway](https://noce.edu/mygateway). Check out [noce.edu/registration-info](https://noce.edu/registration-info) for details.
2. Attend class in-person and/or online through Canvas at [noce.edu/canvas](https://noce.edu/canvas)
3. Optional – Meet with a counselor: 714.808.4682 or [counseling@noce.edu](mailto:counseling@noce.edu).

## Have Questions About Classes?

### Call the Parenting Program

714.808.4909 or [parenting@noce.edu](mailto:parenting@noce.edu).

## Need Registration Help?

### Call StarHelp

714.808.4679 or [starhelp@noce.edu](mailto:starhelp@noce.edu).

### ★ NOTE

Students taking in-person classes must adhere to the NOCCCD COVID-19 vaccine mandate or request an exemption. More information at [noce.edu/vaccine](https://noce.edu/vaccine).

## Parent-and-Me Classes

### Joyful Parenting: Creative Art/Music (Ages 1.5-2.5)

**PARN 101**

Parent and child will enjoy self-esteem building activities together; songs and music; easel and finger painting; band and blocks; school readiness; crafts and Playdoh. Includes activity ideas to do at home. (Please bring a snack).

CRN	Dates	Days	Time	Location	Instructor
51590	8/15 - 10/14	M	09:00am-10:50am	Anaheim Campus - 134	Carter, Chivonne
51591	8/15 - 10/14	Th	09:00am-10:50am	Anaheim Campus - 134	Alquiza, Darrlene
51593	10/17 - 12/16	M	09:00am-10:50am	Anaheim Campus - 134	Carter, Chivonne
51594	10/17 - 12/16	Th	09:00am-10:50am	Anaheim Campus - 134	Alquiza, Darrlene
50846	8/15 - 10/14	W	09:00am-10:50am	NOCE Cypress Main Office - 117	Quintanilla, Melissa
51595	10/17 - 12/16	W	09:00am-10:50am	NOCE Cypress Main Office - 117	Quintanilla, Melissa
50842	8/15 - 10/14	T	09:00am-10:50am	Wilshire NOCE 200 BLDG - 204	Alquiza, Darrlene
51589	8/15 - 10/14	W	09:00am-10:50am	Wilshire NOCE 200 BLDG - 204	Carter, Chivonne
51592	10/17 - 12/16	T	09:00am-10:50am	Wilshire NOCE 200 BLDG - 204	Alquiza, Darrlene
51596	10/17 - 12/22	W	09:00am-10:50am	Wilshire NOCE 200 BLDG - 204	Carter, Chivonne

### Joyful Parenting: Art, Music & Movement (Ages 2.5-5)

**PARN 200**

Parents are introduced to the latest information about child development and parenting skills, through lecture, discussion, observation and hands-on learning with other students. Age appropriate activities are offered to the children so that parents can learn the importance of developmental stages that prepare children for preschool and/or kindergarten. For all classes, please bring a lunch.

CRN	Dates	Days	Time	Location	Instructor
51597	8/15 - 10/14	M	11:00am-12:50pm	Anaheim Campus - 134	Carter, Chivonne
51598	8/15 - 10/14	Th	11:00am-12:50pm	Anaheim Campus - 134	Alquiza, Darrlene
51601	10/17 - 12/16	M	11:00am-12:50pm	Anaheim Campus - 134	Carter, Chivonne
51602	10/17 - 12/16	Th	11:00am-12:50pm	Anaheim Campus - 134	Alquiza, Darrlene
50853	8/15 - 10/14	W	11:00am-12:50pm	NOCE Cypress Main Office - 117	Quintanilla, Melissa
51603	10/17 - 12/16	W	11:00am-12:50pm	NOCE Cypress Main Office - 117	Quintanilla, Melissa
50855	8/15 - 10/14	T	11:00am-12:50pm	Wilshire NOCE 200 BLDG - 204	Alquiza, Darrlene
51599	8/15 - 10/14	W	11:00am-12:50pm	Wilshire NOCE 200 BLDG - 204	Carter, Chivonne
51600	10/17 - 12/16	T	11:00am-12:50pm	Wilshire NOCE 200 BLDG - 204	Alquiza, Darrlene
51604	10/17 - 12/16	W	11:00am-12:50pm	Wilshire NOCE 200 BLDG - 204	Carter, Chivonne

### Developmental Movement (Ages 1 - 2)

**PARN 260**

Parents and children are introduced to developmental movement and music for one and two year-olds. Emphasis is on identifying milestone-appropriate large motor skills, coordinated body movements, and introductory behaviors associated with demonstrations of self-esteem for this age range.

CRN	Dates	Days	Time	Location	Instructor
51611	8/15 - 10/14	W	09:00am-10:50am	Anaheim Campus - 134	Blandford, Cindy
51614	8/15 - 10/14	T	09:00am-10:50am	Anaheim Campus - 134	Blandford, Cindy
51617	10/17 - 12/16	W	09:00am-10:50am	Anaheim Campus - 134	Blandford, Cindy
51618	10/17 - 12/16	T	09:00am-10:50am	Anaheim Campus - 134	Blandford, Cindy
51385	8/15 - 10/14	T	09:00am-10:50am	NOCE Cypress Main Office - 117	Quintanilla, Melissa
51615	8/15 - 10/14	Th	09:00am-10:50am	NOCE Cypress Main Office - 117	Quintanilla, Melissa
51616	10/17 - 12/16	T	09:00am-10:50am	NOCE Cypress Main Office - 117	Quintanilla, Melissa
51621	10/17 - 12/16	Th	09:00am-10:50am	NOCE Cypress Main Office - 117	Quintanilla, Melissa
51381	8/15 - 10/14	Th	09:00am-10:50am	Wilshire NOCE 200 BLDG - 204	Blandford, Cindy
51619	10/17 - 12/16	Th	09:00am-10:50am	Wilshire NOCE 200 BLDG - 204	Blandford, Cindy

## Developmental Movement (Ages 3 - 4.5)

**PARN 262**

Parents and children are introduced to developmental movement, and music for three to four and a half year-olds. Emphasis is on continued tracking of milestone-appropriate large motor skills, coordinated body movements and psychological behaviors associated with demonstrations of self-esteem for this age range.

CRN	Dates	Days	Time	Location	Instructor
51622	8/15 - 10/14	W	11:00am-12:50pm	Anaheim Campus - 134	Blandford, Cindy
51623	8/15 - 10/14	T	11:00am-12:50pm	Anaheim Campus - 134	Blandford, Cindy
51624	10/17 - 12/16	W	11:00am-12:50pm	Anaheim Campus - 134	Blandford, Cindy
51625	10/17 - 12/16	T	11:00am-12:50pm	Anaheim Campus - 134	Blandford, Cindy
50831	8/15 - 10/14	Th	11:00am-12:50pm	NOCE Cypress Main Office - 117	Quintanilla, Melissa
50832	8/15 - 10/14	T	11:00am-12:50pm	NOCE Cypress Main Office - 117	Quintanilla, Melissa
51626	10/17 - 12/16	Th	11:00am-12:50pm	NOCE Cypress Main Office - 117	Quintanilla, Melissa
50965	10/17 - 12/16	T	11:00am-12:50pm	NOCE Cypress Main Office - 117	Quintanilla, Melissa
50830	8/15 - 10/14	Th	11:00am-12:50pm	Wilshire NOCE 200 BLDG - 204	Blandford, Cindy
50964	10/17 - 12/16	Th	11:00am-12:50pm	Wilshire NOCE 200 BLDG - 204	Blandford, Cindy

## Raising Thoughtful Children (Ages 1.5-2.5)

**PARN 237**

Students participate with their child to support social-emotional development as they guide their child to build awareness of self, family, community, and the world. The class uses developmentally appropriate activities for very young children.

CRN	Dates	Days	Time	Location	Instructor
51605	8/15 - 10/14	M	09:00am-10:50am	Wilshire NOCE 200 BLDG - 204	Alquiza, Darlene
51606	10/17 - 12/16	M	09:00am-10:50am	Wilshire NOCE 200 BLDG - 204	Alquiza, Darlene

## Raising Thoughtful Children (Ages 2.5-5)

**PARN 238**

Students participate with their child to support social-emotional development as they guide their child to build awareness of self, family, community, and the world. The class uses developmentally appropriate activities that emphasize building a growth mindset and thoughtfulness toward themselves and towards others.

CRN	Dates	Days	Time	Location	Instructor
51609	8/15 - 10/14	M	11:00am-12:50pm	Wilshire NOCE 200 BLDG - 204	Alquiza, Darlene
51610	10/17 - 12/16	M	11:00am-12:50pm	Wilshire NOCE 200 BLDG - 204	Alquiza, Darlene
51696	11/29 - 11/29	T	10:00am-11:30am	TDB	Staff

## Foundational Parenting Classes

### Connected Parenting

**PARN 102**

This class focuses on strengthening the caregiver-child connections, essential methods in helping children regulate their emotions, improving feelings of safety and security and decrease challenging behaviors. These are simple, research-based techniques for every parent who wants to build a life-long positive relationship with their child.

CRN	Dates	Days	Time	Location	Instructor
51635	10/10 - 11/14	T	07:00pm-08:30pm	Kraemer Middle School Library	De La Mora, Jamie
	10/10 - 11/14	Remote	Remote	ONLINE	De La Mora, Jamie
					<i>Spanish interpretation may be available.</i>
51628	10/31 - 12/16	Remote	Remote	ONLINE	Sherard, Erin

## Parenting Workshops

### Love and Logic® Workshop 1

**PARN 350**

This course is a 90-minute workshop provides an overview of what is offered in Parenting the Love & Logic Way® and provides tools for foundational relationship building and disengaging in arguing.

CRN	Dates	Days	Time	Location	Instructor
51666	9/7 - 9/7	W	06:30pm-08:00pm	PYLUSD Pro Development Academy	Sherard, Erin
	<i>Spanish interpretation may be available.</i>				
51662	9/19 - 9/19	M	09:30am-11:00am	Key Elementary School – Room 25	Sherard, Erin
	<i>Spanish interpretation may be available.</i>				
51663	10/20 - 10/20	Th	06:15pm-07:45pm	Boys and Girls Club of Cypress	Sherard, Erin
	<i>Spanish interpretation may be available.</i>				

### Internet Safety Workshop

**PARN 352**

The purpose of this workshop course is to help parents and caregivers gain awareness and understanding around the online world and provide an overview of what is offered in PARN 307.

CRN	Dates	Days	Time	Location	Instructor
51664	8/29 - 8/29	M	06:00pm-07:30pm	TBD	Sherard, Erin
	<i>Spanish interpretation may be available.</i>				
51661	10/4 - 10/4	T	07:00pm-08:30pm	Kraemer Middle School - Library	Sherard, Erin
	<i>Spanish interpretation may be available.</i>				

## Love and Logic® Classes

Love and Logic® is a registered trademark of the Love and Logic Institute, Inc.

### Parenting with Love and Logic®

**PARN 265**

This course assists parents and caregivers in developing practical skills for reinforcing the expectations their children experience at home and in school. Utilizing The Love and Logic® approach, this course will teach six subsets of skills that encourage home environments that stimulate responsibility, prevent misbehavior, and encourage setting healthy limits.

CRN	Dates	Days	Time	Location	Instructor
50871	9/5 - 10/14	Remote	Remote	ONLINE	Sherard, Erin
	<i>Fast-track course paced over 6 weeks.</i>				
50870	9/12 - 12/9	T	08:00am-09:30am	Golden Elementary School - MPR	Sherard, Erin
	9/12 - 12/9	Remote	Remote	ONLINE	Sherard, Erin
	<i>Enrolled students required to present Drivers License or ID to enter the school site.</i>				
51636	9/12 - 12/9	Remote	Remote	ONLINE	Sherard, Erin
	9/12 - 12/9	W	06:00pm-07:00pm	Rose Drive Elementary School - MPR	Sherard, Erin
51637	9/12 - 12/9	Remote	Remote	ONLINE	Sherard, Erin
	9/12 - 12/9	W	08:30am-10:00am	Fairmont Elementary – Main Comm	Sherard, Erin
	<i>Enrolled students required to present Drivers License or ID to enter the school site.</i>				
51632	9/26 - 12/16	Remote	Remote	ONLINE	Sherard, Erin
51638	9/26 - 12/16	T	12:00pm-12:50pm	NOCE Wilshire, BLDG 200 – Rm 203	Sherard, Erin
	9/26 - 12/16	Remote	Remote	ONLINE	Sherard, Erin
	<i>Spanish interpretation may be available.</i>				
51643	10/10 - 11/18	Remote	Remote	ONLINE	Sherard, Erin
	10/10 - 11/18	M	09:00am-10:30am	Key Elementary Parent Center– Rm 25	Sherard, Erin



## Love and Logic: Supporting Youth with Special Needs™ PARN 268

This course is designed to support adults parenting or supporting youth with disabilities by developing practical skills for reinforcing the expectations of children at home and in school. By utilizing the Love and Logic® approach, this course will teach four subsets of skills that encourage home environments that stimulate positive relationship development, empathetic listening, realistic goal setting, and encourage independence. The information included in this course is for those who already have a strong understanding of the Love and Logic® approach.

CRN	Dates	Days	Time	Location	Instructor
51292	10/17 - 11/18	Remote	Remote	ONLINE	Staff
	10/17 - 11/18	T	06:00pm-07:30pm	Anaheim Union HS District	Staff

*Spanish interpretation may be available. Fast-track course paced over 6 weeks.*

## Love and Logic: Adults Supporting Youth with Challenging Pasts™

PARN 269

This course assists parents and caregivers in understanding how trauma and hurtful events affect a child's brain. Students will learn the importance of bonding and relationships and how to address the root causes of a child's behavior through practicing empathy, establishing boundaries, and building healthy relationships.

CRN	Dates	Days	Time	Location	Instructor
51667	8/15 - 9/19	Remote	Remote	ZOOM	Sherard, Erin
					<i>Fast-track course paced over 6 weeks.</i>
51293	10/17 - 11/14	Remote	Remote	ONLINE	Sherard, Erin
					<i>Fast-track course paced over 6 weeks.</i>

## Child Wellness

(Building Trauma Informed Communities)

## Building Trauma Informed Communities: Adverse Childhood Experiences

PARN 300

This course assists parents and caregivers in learning about the effects of childhood adversity, toxic stress, and the impact on health and well-being. Tools are provided to help parents and caregivers address their personal histories in order to provide attuned, nurturing care. Tools are also provided to promote healing and resilience in children.

CRN	Dates	Days	Time	Location	Instructor
51303	9/5 - 10/21	W	07:30pm-08:30pm	Anaheim Campus - 116	Carter, Chivonne
	9/5 - 10/21	Remote	Remote	ONLINE	Carter, Chivonne
					<i>Spanish interpretation may be available.</i>
51301	10/17 - 12/16	Remote	Remote	ONLINE	Carter, Chivonne
					<i>Spanish translation available.</i>

## Building Trauma Informed Communities: Early Childhood and Infancy

PARN 301

This course assists parents and caregivers in learning the importance of connection (attachment and bonding) as the building blocks to infant/early childhood social emotional and cognitive development. The focus is on exploring ways parents and caregivers can provide responsive and attuned care while increasing lifelong resilience for their children

CRN	Dates	Days	Time	Location	Instructor
51630	10/17 - 12/5	Remote	Remote	ONLINE	Carter, Chivonne

## Building Trauma Informed Communities: Family Dynamics

**PARN 303**

This course assists parents and caregivers in learning the characteristics needed for healthy environments and relationships in the home while recognizing the uniqueness of each family dynamic. The focus is on ways parents and caregivers can care for themselves while providing the stability needed to meet the physical and emotional needs of children.

CRN	Dates	Days	Time	Location	Instructor
51304	9/15 - 11/3	Th	06:00pm-09:00pm	Anaheim Campus - 116	Armstrong, Joanne

## Building Trauma Informed Communities: Mental Health in Our Homes

**PARN 304**

This course provides parents and caregivers an overview on mental health in order to provide awareness and understanding. The focus is on exploring factors that influence mental health in our homes, protective measures, and skills needed to aid in healthy coping and regulation strategies for parents, caregivers, and youth in the community.

CRN	Dates	Days	Time	Location	Instructor
51309	10/3 - 10/28	Th	06:00pm-08:00pm	Placentia-Yorba Linda HS Dist-PYLUSD	De La Mora, Jamie
	10/3 - 10/28	Remote	Remote	ONLINE	De La Mora, Jamie
	<i>Spanish interpretation may be available.</i>				
51310	10/17 - 11/11	Remote	Remote	ONLINE	De La Mora, Jamie

## Building Trauma Informed Communities: Awareness and Human Trafficking Prevention

**PARN 306**

This course provides an overview on human trafficking and includes the perspectives of many working in the anti-trafficking movement in order to provide awareness in our homes, schools, and communities. The focus is on exploring definitions, risk factors, and skills needed to aid in the prevention and protection for our youth.

CRN	Dates	Days	Time	Location	Instructor
51316	10/24 - 12/16	Remote	Remote	ONLINE	De La Mora, Jamie

## Building Trauma Informed Communities: Internet Safety and Awareness

**PARN 307**

The purpose of this course is to help parents and caregivers gain awareness and understanding around the online world and how it works. The benefits and risks associated with the Internet will be explored along with the tools needed to help children stay safe while they engage in technology use.

CRN	Dates	Days	Time	Location	Instructor
51634	9/26 - 10/21	Remote	Remote	ONLINE	De La Mora, Jamie
	9/26 - 10/21	F	10:00am-10:50am	Ponderosa Park Family Resource Ctr	De La Mora, Jamie
51627	10/10 - 11/4	Remote	Remote	ONLINE	De La Mora, Jamie



# COMMUNITY SERVICES

Learn new skills.

Personal enrichment, fitness, fine arts and more.

Explore [noce.edu/grow](https://noce.edu/grow).



**Need Translated Instructions?**

**¿Necesita instrucciones traducidas?**

Haga clic en "Traducir" en la esquina superior derecha de la página. Seleccione su idioma para traducir el sitio. O llame al **714.808.4679** para obtener más ayuda.

# Program Overview

## Explore, Improve, and Grow

The Community Services program provides a variety of classes and opportunities that support personal enrichment, skills to improve your career, and a variety of arts to keep you engaged.

Visit [noce.edu/grow](https://noce.edu/grow).

### Popular Topics

#### Offered Now:

- Business and Professional Development
- Fine and Applied Arts

#### Offered in the Near Future:

- Language Arts
- Fitness, Wellness, and Dance
- Kids' College and Teen Program

\*NOCE will not be hosting Kids' College and Teen Program classes for the 2022 Fall Semester. Check online for the latest class schedule at [noce.edu/grow](https://noce.edu/grow).

### ED2Go

Fee-Based Online Courses for Personal and Professional Development

For more information, visit: <https://www.ed2go.com/noce>.

Fee-Based Online Courses for Career Training

For more information, visit: <https://careertraining.ed2go.com/easyed>.

### Ready to Get Started?

Registration for personal enrichment and Kids' College courses is an easy application process that is different from our tuition-free programs. Visit [noce.edu/grow](https://noce.edu/grow).

- 1. Apply:** Create a new student or household profile
- 2. Browse classes:** Click on the "BROWSE" dropdown button to view available classes and categories.
- 3. Register for classes:** Click "ADD TO CART" to select the class you want to take. You can add multiple classes to your cart before checkout. Follow the prompts to confirm and pay for classes.

### Have Questions about Classes?

#### Call the Community Services Program

714.808.4909 or [grow@noce.edu](mailto:grow@noce.edu).

### Need Registration Help?

#### Call StarHelp

714.808.4679 or [starhelp@noce.edu](mailto:starhelp@noce.edu).

### ★ NOTE

Students taking in-person classes must adhere to the NOCCCD COVID-19 vaccine mandate or request an exemption. More information at [noce.edu/vaccine](https://noce.edu/vaccine).

For more details, visit [noce.edu/academic-policies](https://noce.edu/academic-policies).

## Open Enrollment

By District policy, “every course, course section or class shall be open to enrollment and participation by any person who has been admitted to North Orange Continuing Education (NOCE).”

## Class Schedule Subject to Change

NOCE has made every reasonable effort to determine that this class schedule is accurate; however, changes may occur after press time. See the online, searchable class schedule for the most up-to-date information at [noce.edu/schedule](https://noce.edu/schedule).

## Parking

Parking permits are required to park at Fullerton College and at the Wilshire Center. Permits will be available in the 300 building, Admissions and Records office at the Wilshire Center at no charge for registered students.

At this time, Anaheim Campus and Cypress Center do not require permits to park. Students must park in marked spaces for on-campus classes at the Anaheim Campus, Cypress Center, and Wilshire Center.

## Class Information

For details on the information listed below, visit [noce.edu/academic-policies](https://noce.edu/academic-policies).

- Admission to Classes
- Tuition-Free Classes
- Auditing Classes
- Class Attendance/Cancellations
- Weekend Policy
- In-Class Registration
- Children in Class
- Campus Bookstores
- Waitlist Policies
- Minor Students

## Fees/Payments

For more information regarding fees/payment information, including class fees, paying for class, holds, and refunds, visit: [noce.edu/academic-policies](https://noce.edu/academic-policies).

Tuition-Free (Apportionment) classes are offered through the state of California and funded based on class attendance. NOCE offers the following apportionment classes:

- English as a Second Language
- Citizenship for Immigrants
- Elementary and Secondary Basic Skills
- Health and Safety
- DSS (Substantial Disabilities)
- Parenting
- Home Economics
- Older Adults (Emeritus)
- Short-Term Vocational (Career Technical Education)
- Workforce Preparation

## Records and Identification Cards

For more information on Records and Identification cards, visit: [noce.edu/academic-policies](https://noce.edu/academic-policies).

- Student Records
- Records and Release of Records
- Classification of Students
- Catalog Rights Policy

## Grading Policy

For detailed Grading Policy information, visit: [noce.edu/academic-policies](https://noce.edu/academic-policies).

- Grade Appeal Policy
- Academic Honesty

## Information Change

For more information regarding Information Change, visit: [noce.edu/academic-policies](https://noce.edu/academic-policies).

A student may submit a request to update their legal or chosen name as well as sex in compliance with NOCCCD Administrative Procedure (AP) 5041.

Changes can be made to the following at any NOCE Admissions and Records Office:

- Legal Name/Legal Sex
- Chosen Name/Gender Identity
- Gender and Gender Identity

## Campus Safety

For details on Campus Safety, visit: [noce.edu/safety](https://noce.edu/safety).

For any emergency, dial 9-1-1.

To reach Campus Safety, call the following numbers by NOCE Center:

- Anaheim Campus Safety: **714.808.4911**
- NOCE Cypress Center (Cypress College Campus Safety): **714.484.7387**
- NOCE Wilshire Center (Fullerton College Campus Safety): **714.992.7777**

## Victims of Sexual Assault

Students who are victims of sexual assault occurring on District property or at an off-site location maintained by the District, or for those seeking information or assistance regarding a sexual assault, should contact a Campus Safety Office, listed above.

All inquiries will be maintained in confidence, except as may otherwise be required by law.

For more information or additional assistance, contact:

**Martha Gutierrez**, NOCE Title IX Coordinator/Vice President of Student Services  
North Orange Continuing Education, 1830 W. Romneya Drive, Anaheim, CA 92801  
Telephone: **714.808.4660** E-mail: [mgutierrez@noce.edu](mailto:mgutierrez@noce.edu)

## Student Conduct Policy

For the full Student Conduct Policy, visit: [noce.edu/academic-policies](https://noce.edu/academic-policies).

The standards of student conduct and disciplinary action for violation of Board Policy 5500 were approved by the NOCCCD Board on January 28, 2003, and were drawn in compliance with Sections 66300, 76030, 76033, 7034, 76036 of the State Education Code.

## Board Policies and Procedures

For additional policies and procedures enacted by the NOCCCD Board of Trustees, visit [noce.edu/policies](https://noce.edu/policies).

## Non-Discrimination Statement

The policy of the North Orange County Community College District is to provide an educational, employment, and business environment, including but not limited to access to its services, classes, and programs in which no person shall be unlawfully denied full and equal access to the benefits of, or be unlawfully subjected to discrimination on the basis of ethnic group identification, national origin, religion, age, sex, gender, gender identification, gender expression, race, color, medical condition, genetic information, ancestry, sexual orientation, marital status, physical or mental disability, or military and veteran status, or as otherwise prohibited by state and federal statutes, or because he or she is perceived to have one or more foregoing characteristics, or based on association with a person or group with one or more of these actual perceived characteristics in any program or activity of the District that is administered by, directly funded by, or that receives any financial assistance from the Chancellor or Board of Governors of the California Community Colleges. Discrimination on the basis of sex or gender also includes sexual harassment.

## Disability Support Services

NOCE provides support services to enable persons with disabilities to participate in classes and programs. Support may include tutors, interpreter service, note takers, or other assistance. See the Disability Support Services section in this schedule for additional class listings. For accommodations or more information, contact **714.484.7057** or [disabilitysupport@noce.edu](mailto:disabilitysupport@noce.edu).

## Accreditation

For more information, visit [noce.edu/accreditation](https://noce.edu/accreditation) or contact WASC at:



Accrediting Commission for Schools, Western Association of Schools and Colleges  
533 Airport Blvd., Suite 200, Burlingame, California 90410  
Website: <https://www.acswasc.org/>

## NOCCCD Board of Trustees

**Jacqueline Rodarte**, President  
**Ed Lopez, JD**, Vice President  
**Evangelina Rosales**, Secretary  
**Ryan Bent**, Member  
**Stephen T. Blout**, Member  
**Jeffrey P. Brown**, Member

**Barbara Dunsheath, Ed.D.**, Member  
**Kisha Mehta**, Student Trustee – Cypress College  
**Paloma Foster**, Student Trustee – Fullerton College

**Dr. Byron D. Clift Breland**, NOCCCD Chancellor  
**Valentina Purtell**, President, North Orange Continuing Education

## RESIDENTIAL CUSTOMER

**YOU ARE NOCE.  
APPLY TODAY!**

**Many in-person  
and online classes**

ACTIVE OLDER ADULTS/  
EMERITUS

CAREER TRAINING IN  
HIGH-DEMAND PROFESSIONS

CHILD WELLNESS

CITIZENSHIP PREPARATION

COLLEGE PREPARATION

COMMUNITY SERVICES

ENGLISH AS A SECOND  
LANGUAGE

HIGH SCHOOL DIPLOMA AND  
GED/HISET PREPARATION

PARENTING

TRAINING FOR ADULTS  
WITH DISABILITIES



**StarHelp  
Customer Service**

 714.808.4679

 [starhelp@noce.edu](mailto:starhelp@noce.edu)

 [noce.edu](http://noce.edu)



Accredited by the Accrediting Commission for Schools,  
Western Association of Schools and Colleges  
533 Airport Blvd, Suite 200  
Burlingame, CA 94010

 [www.acswasc.org](http://www.acswasc.org)